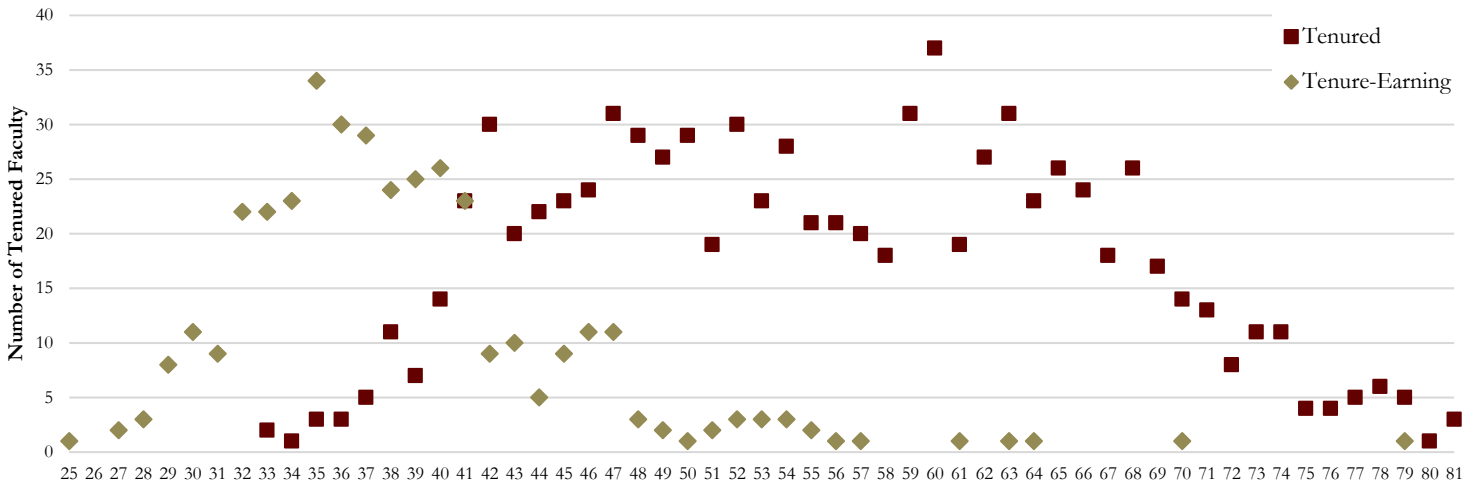


Tenured Faculty by Age, 2018-19



	<u>25-30</u>	<u>31-35</u>	<u>36-40</u>	<u>41-45</u>	<u>46-50</u>	<u>51-55</u>	<u>56-60</u>	<u>61-65</u>	<u>66-70</u>	<u>71-75</u>	<u>76+</u>	<u>Total</u>
Tenured Faculty												
Arts and Sciences	0	1	13	50	61	48	57	50	29	17	14	340
Business	0	1	2	7	13	8	3	9	8	2	1	54
Communication & Information	0	0	0	5	9	7	2	7	5	1	1	37
Criminology & Criminal Justice	0	0	1	1	4	1	0	1	0	3	1	12
Education	0	1	4	11	8	5	3	7	6	3	0	48
Engineering	0	0	3	7	6	8	8	6	4	1	0	43
Entrepreneurship	0	0	0	0	0	1	0	1	1	0	0	3
Fine Arts	0	0	3	8	4	8	12	6	9	4	2	56
Hospitality	0	1	0	0	1	1	1	1	1	0	0	6
Human Sciences	0	0	1	0	3	2	3	3	2	1	0	15
Law	0	0	6	3	3	1	4	4	2	1	0	24
Medicine	0	0	2	3	6	6	8	7	5	1	0	38
Motion Picture Arts	0	0	0	0	1	1	1	0	1	0	0	4
Music	0	0	0	2	9	12	9	10	11	3	1	57
Nursing	0	0	0	1	0	1	1	2	2	1	0	8
Social Sciences & Public Policy	0	2	4	14	10	9	7	6	5	3	4	64
Social Work	0	0	0	4	0	0	2	3	2	2	0	13
Other Departments and Offices*	<u>0</u>	<u>0</u>	<u>1</u>	<u>2</u>	<u>2</u>	<u>2</u>	<u>6</u>	<u>3</u>	<u>6</u>	<u>4</u>	<u>0</u>	<u>26</u>
Total	0	6	40	118	140	121	127	126	99	47	24	848
Tenure Earning Faculty												
Arts and Sciences	11	38	49	18	3	0	0	0	0	0	0	119
Business	2	12	9	3	1	0	0	0	0	0	0	27
Communication & Information	2	7	8	2	1	3	0	0	0	0	0	23
Criminology & Criminal Justice	2	6	0	0	0	0	0	0	0	0	0	8
Education	2	9	10	3	2	0	0	0	0	0	0	26
Engineering	1	5	10	2	0	2	1	0	0	0	0	21
Entrepreneurship	1	2	0	0	0	0	0	0	0	0	0	3
Fine Arts	0	5	5	7	5	2	0	3	0	0	0	27
Hospitality	0	2	0	0	0	0	0	0	0	0	0	2
Human Sciences	2	5	5	2	4	1	0	0	0	0	0	19
Law	0	1	3	1	0	0	0	0	0	0	0	5
Medicine	0	1	3	3	2	2	0	0	0	0	0	11
Motion Picture Arts	0	0	0	0	0	0	0	0	0	0	0	0
Music	0	2	9	4	6	0	1	0	0	0	1	23
Nursing	0	0	3	2	2	1	0	0	1	0	0	9
Social Sciences & Public Policy	2	14	16	6	1	1	0	0	0	0	0	40
Social Work	0	1	3	2	1	0	0	0	0	0	0	7
Other Departments and Offices*	<u>0</u>	<u>0</u>	<u>1</u>	<u>1</u>	<u>0</u>	<u>1</u>	<u>0</u>	<u>0</u>	<u>0</u>	<u>0</u>	<u>0</u>	<u>3</u>
Total	25	110	134	56	28	13	2	3	1	0	1	373

* Other departments and offices include: Office of Distance Learning, The Graduate School, ISPA, LSI, National High Magnetic Field Lab., Office of the President, Office of the Provost, Office of Research, PC Campus, Center for Civic Education & Service, and Undergraduate Studies.

Source: Office of Institutional Research (Employee File)