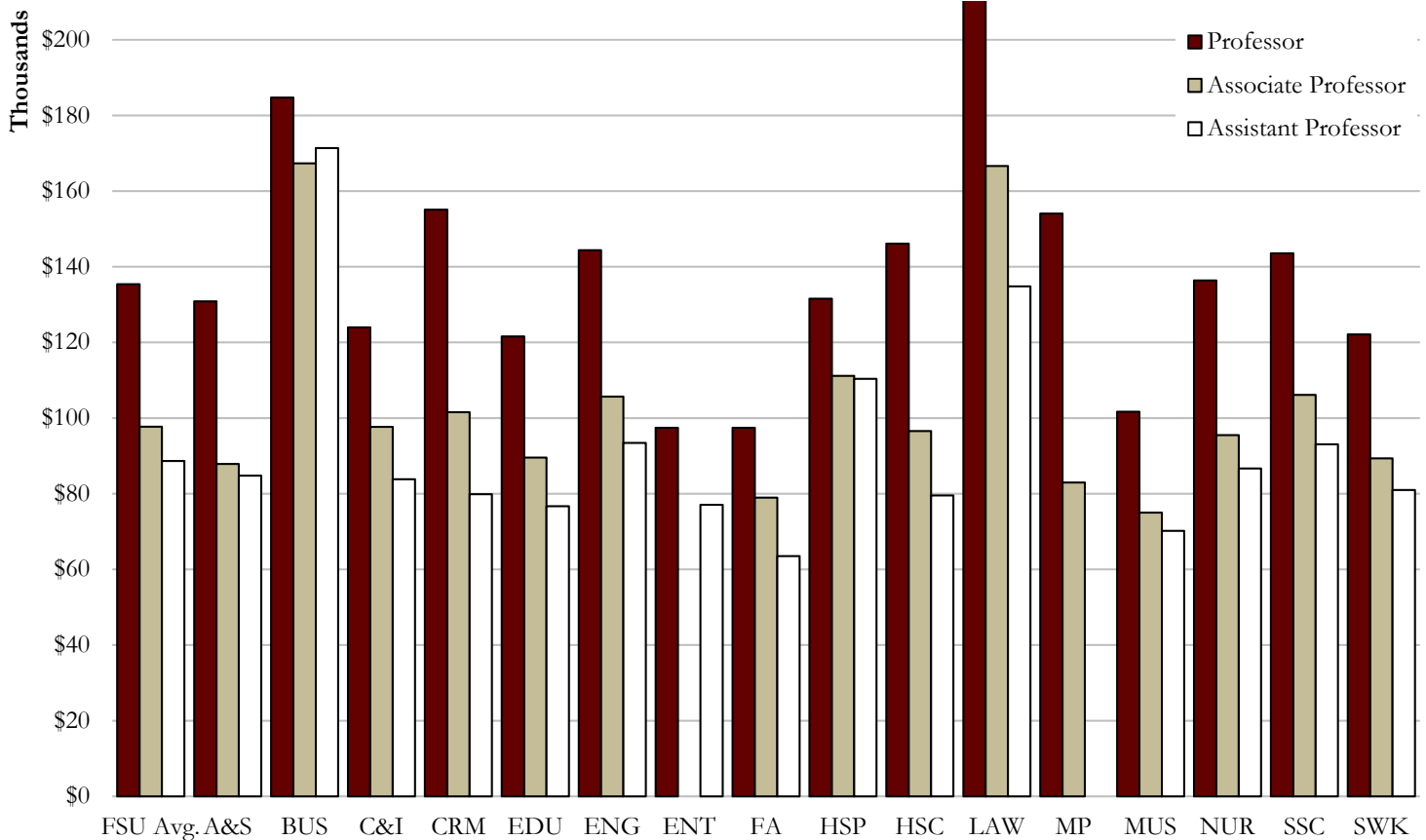


## Mean Salary by Rank for Nine-Month Filled Faculty, 2018-19



| <u>College</u>                  | <u>Professor</u> | <u>Associate Professor</u> | <u>Assistant Professor</u> | <u>Other</u>    |
|---------------------------------|------------------|----------------------------|----------------------------|-----------------|
| Arts & Sciences                 | \$130,837        | \$87,859                   | \$84,786                   | \$52,568        |
| Business                        | \$184,745        | \$167,320                  | \$171,370                  | \$84,368        |
| Communication & Information     | \$123,976        | \$97,682                   | \$83,811                   | \$79,041        |
| Criminology & Criminal Justice  | \$155,093        | \$101,536                  | \$79,855                   |                 |
| Education                       | \$121,600        | \$89,554                   | \$76,692                   | \$64,409        |
| Engineering                     | \$144,364        | \$105,666                  | \$93,432                   |                 |
| Entrepreneurship                | \$97,423         |                            | \$77,084                   | \$81,133        |
| Fine Arts                       | \$97,429         | \$78,953                   | \$63,510                   | \$58,082        |
| Hospitality                     | \$131,557        | \$111,168                  | \$110,370                  | \$62,334        |
| Human Sciences                  | \$146,114        | \$96,548                   | \$79,536                   | \$75,823        |
| Law                             | \$214,798        | \$166,615                  | \$134,817                  | \$74,044        |
| Motion Picture Arts             | \$154,051        | \$82,941                   |                            | \$134,308       |
| Music                           | \$101,678        | \$75,003                   | \$70,204                   | \$71,055        |
| Nursing                         | \$136,372        | \$95,485                   | \$86,676                   | \$81,563        |
| Social Sciences & Public Policy | \$143,533        | \$106,144                  | \$93,071                   | \$89,016        |
| Social Work                     | \$122,138        | \$89,355                   | \$80,996                   | \$63,243        |
| <b>Nine-month Mean</b>          | <b>\$135,393</b> | <b>\$97,719</b>            | <b>\$88,652</b>            | <b>\$75,994</b> |

*Note: Average faculty salaries calculated on filled, full-time positions only. The overall nine-month mean includes faculty in non-academic areas. Faculty positions reported exclude College of Medicine. See page 74 of this book for College of Medicine mean salaries.*

*Source: Operating Budget File 2018-19*