

Modern Languages Department Review
French
Fall Term 2005

Table of Contents

	<u>Page</u>
Degree Programs	1
Majors.....	2
Degrees Awarded.....	9
Average Class Size	10
Credit Hours by Semester/Fall & Spring/Annual	
Fundable.....	11
Non-fundable	12
Total.....	13
The Faculty	14
Credit Hours and Courses by Instructor Type	
E&G Detail 1999-00 to 2003-04	16
C&G Detail 1999-00 to 2003-04	17
Faculty Courses and Hours 1999-00 and 2003-04	
(Individual Faculty Summary)	
1999-00	18
2003-04	21
E&G Budgeted Faculty and Staff Lines	24
E&G Beginning of Year Budget	25
C&G Expenditures.....	26
E&G Expenditures by Summary Object Code.....	27
Faculty Course Detail 1999-00 and 2003-04.....	28

Modern Languages Department
French
FALL TERM 2005

Most recent available statistics

Information on Division

		Report Page No(s)
Degrees Offered	9	1
Majors (Fall 2004 Headcount)		
Undergraduate	25	2-8
Graduate	8	2-8
Doctorate	17	2-8
Total	50	2-8
2003-2004 Degrees Awarded (2004-2005 Not Yet Available)	15	9
Average Class Size (Fall 2004)		
Undergraduate		
Lower- classroom	20.4	10
Upper- classroom	21.6	10
Graduate- classroom	3.8	10
Credit Hours- Annual (2004-2005)		
Fundable	5,462	11
Non-fundable	251	12
Total	5,713	13
University (fundable)	1,014,409	SDCF*
2003-2004 Department Fundable Hours As Percent of University Fundable Hours	0.5%	calculated
Student FTE's- Annual (state fundable 2004-2005)	139.6	11

Information on Department

Faculty	38	14-15
Credit Hours Percentages by Instructor Type (Fall 2003)		16
Faculty	30.8%	calculated
Faculty Overload	0.0%	calculated
Adjuncts	4.0%	calculated
Graduate Assistants	65.1%	calculated
A&P/USPS	0.0%	calculated
Phased Retirement	0.0%	calculated
Others	0.1%	calculated
Average Total Credit Hours Taught by Faculty (All Hours, 2003-2004)		
Fall Term	125.9	16
Spring Term	117.4	16
Academic Year	243.3	calculated
Annual FTE's Taught by Faculty (Fall & Spring total hrs converted to annual FTE's, 2003-2004)		23
Undergraduate (academic year hours/40)	181.8	calculated
Graduate (academic year hours/32)	57.8	calculated
Total	239.6	calculated
Delaware Study+, Hours Taught per Faculty (instructional faculty only, Fall 2002, national research univ.)	NA	NA
FSU Hours taught per Faculty (instructional faculty only, Fall 2002)	NA	NA
Doctoral Students/Faculty Ratio (source: Research-Doctorate Programs in the United States- 1993 Study, N.R.C.)		
National Average (French Language and Literature)	2.4	NRC*
FSU Average	Not reported by NRC	NRC*
Annual E&G Expenditures (2004-2005)	\$ 3,973,414	25
Annual Student FTE's (state fundable 2004-2005)	139.6	11
Annual E&G Expenditures per Annual Student FTE (2004-2005)	\$ 28,455	calculated
Annual C&G expenditures (2003-2004)	\$ 45,122	26
Annual C&G expenditures per Faculty (2003-04) [Using 36.00 Filled Faculty from IR Faculty Salaries Report]	\$ 1,253	calculated

*Note: most statistics are based on the Modern Languages account 1330xxx-xx. Related accounts may not be included in expenditures and in faculty courses and hours taught. *SDCF=Student Data Course File, NRC=National Research Council
+ Please contact Donna Smith in FSU IR (644-4203) if you would like additional information about UDE Study.*

**COLLEGE OF ARTS & SCIENCES
DEPARTMENT OF MODERN LANGUAGES
FRENCH
DEGREE PROGRAMS**

Major Name	Major Code	CIP Code	Degree Offered
French	117110	160901	Bachelors
French	117110	160901	Masters
French	117110	160901	Doctorate

Major Name	Major Code	CIP Code	Degree Offered
French/Business	117111	160901	Bachelors

Major Name	Major Code	CIP Code	Degree Offered
French and Russian	117112	160901	Bachelors

Major Name	Major Code	CIP Code	Degree Offered
French and Spanish	117113	160901	Bachelors

Major Name	Major Code	CIP Code	Degree Offered
French and German	117114	160901	Bachelors

Major Name	Major Code	CIP Code	Degree Offered
French and Italian	117115	160901	Bachelors

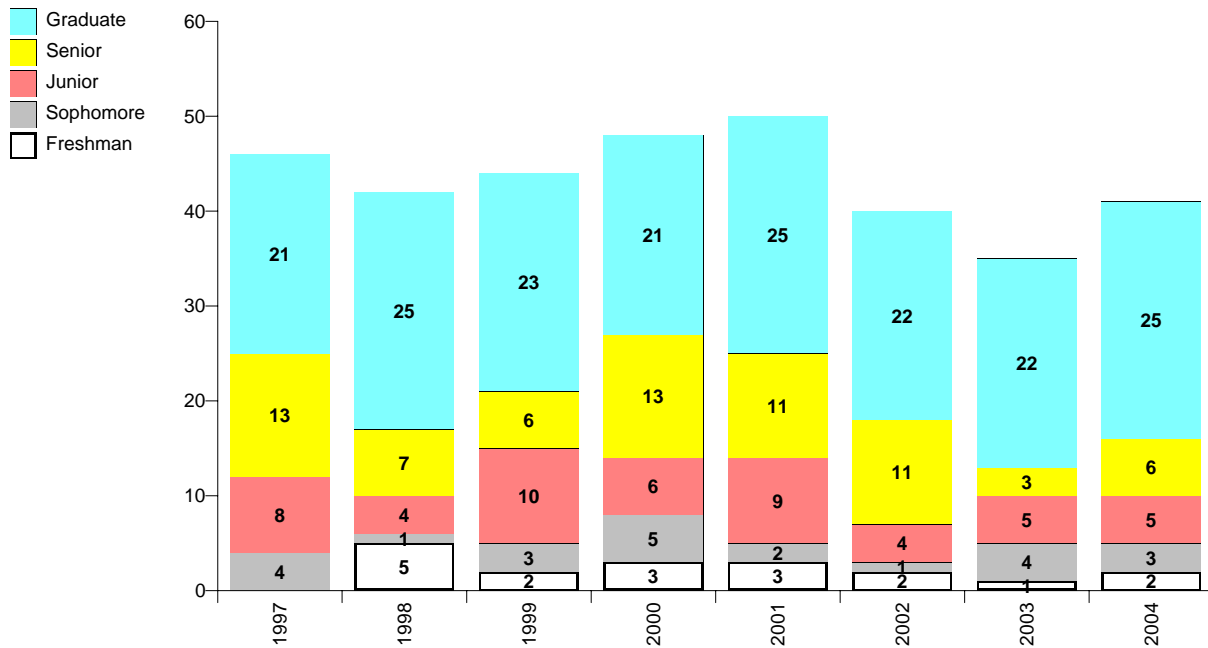
Major Name	Major Code	CIP Code	Degree Offered
French and Francophone Studies	117116	050124	Bachelors

Source: Degree Program Inventory, FSU and SUS

**COLLEGE OF ARTS & SCIENCES
 MODERN LANGUAGES
 FRENCH
 ENROLLMENT BY FALL SEMESTER**

FRENCH

117110



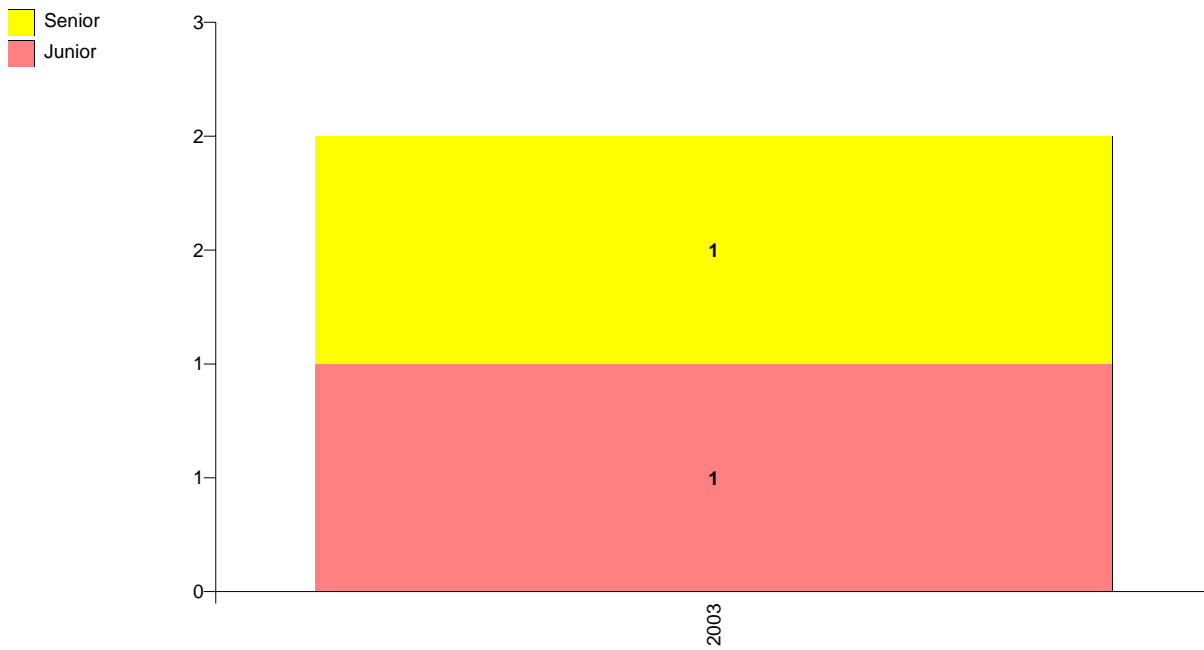
	1997	1998	1999	2000	2001	2002	2003	2004
Freshman		5	2	3	3	2	1	2
Sophomore	4	1	3	5	2	1	4	3
Junior	8	4	10	6	9	4	5	5
Senior	13	7	6	13	11	11	3	6
Graduate - Masters	8	14	14	12	13	8	7	8
Graduate - Doctorate	13	11	9	9	12	14	15	17
Total	46	42	44	48	50	40	35	41

Source: Fall Preliminary Student Data Course Files

**COLLEGE OF ARTS & SCIENCES
MODERN LANGUAGES
FRENCH
ENROLLMENT BY FALL SEMESTER**

FRENCH AND GERMAN

117114



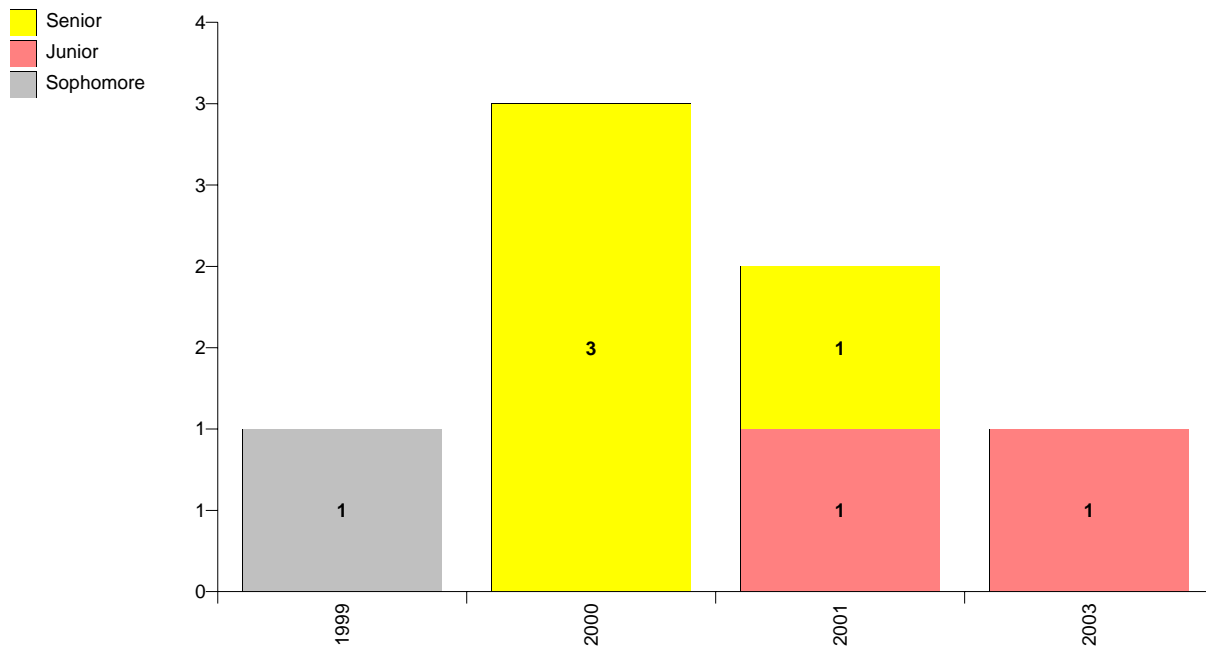
	2003
Junior	1
Senior	1
Total	2

Source: Fall Preliminary Student Data Course Files

**COLLEGE OF ARTS & SCIENCES
 MODERN LANGUAGES
 FRENCH
 ENROLLMENT BY FALL SEMESTER**

FRENCH AND ITALIAN

117115



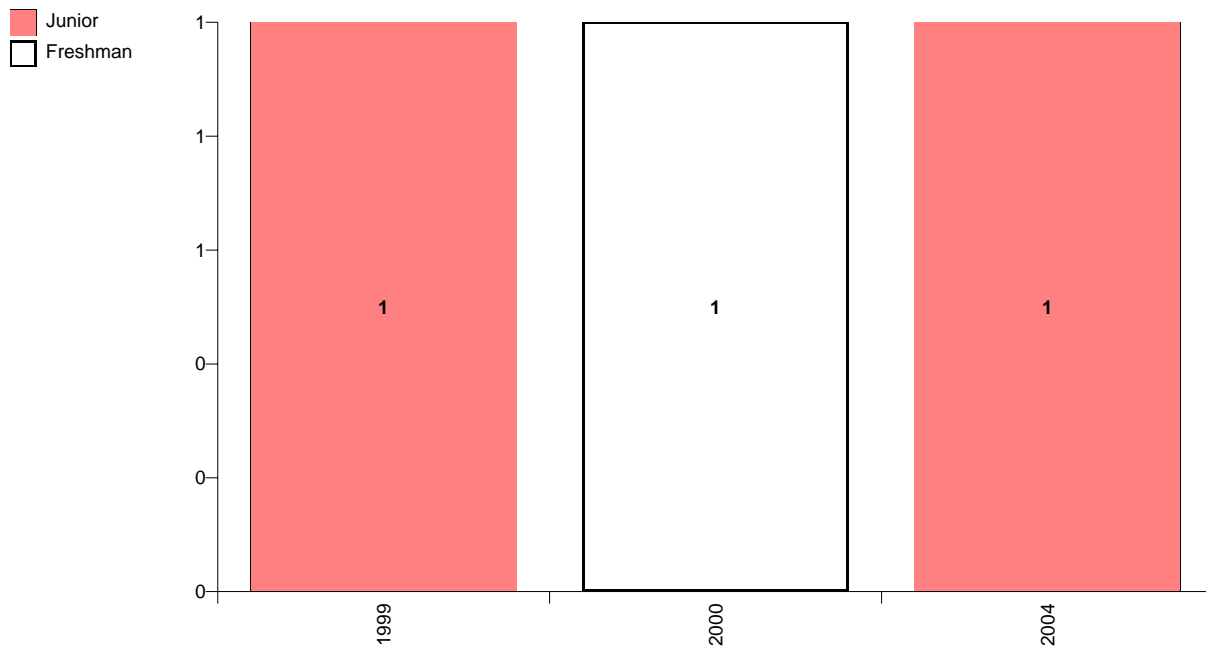
	1999	2000	2001	2003
Sophomore	1			
Junior			1	1
Senior		3	1	
Total	1	3	2	1

Source: Fall Preliminary Student Data Course Files

**COLLEGE OF ARTS & SCIENCES
 MODERN LANGUAGES
 FRENCH
 ENROLLMENT BY FALL SEMESTER**

FRENCH AND RUSSIAN

117112



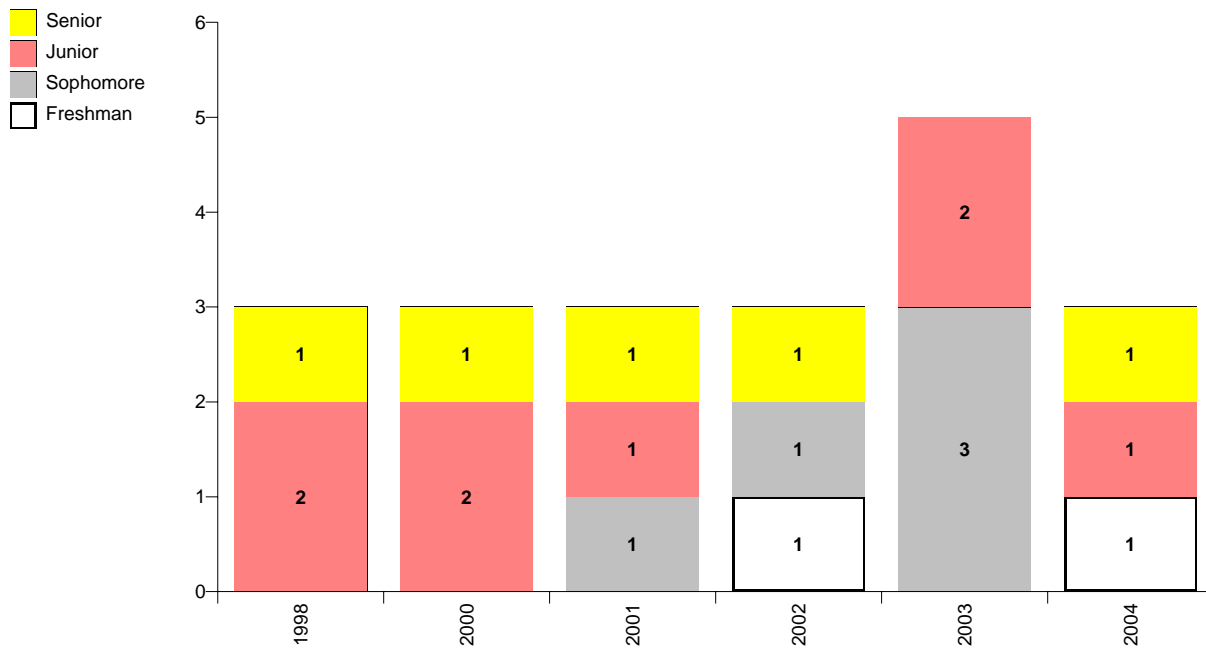
	1999	2000	2004
Freshman		1	
Junior	1		1
Total	1	1	1

Source: Fall Preliminary Student Data Course Files

**COLLEGE OF ARTS & SCIENCES
 MODERN LANGUAGES
 FRENCH
 ENROLLMENT BY FALL SEMESTER**

FRENCH AND SPANISH

117113



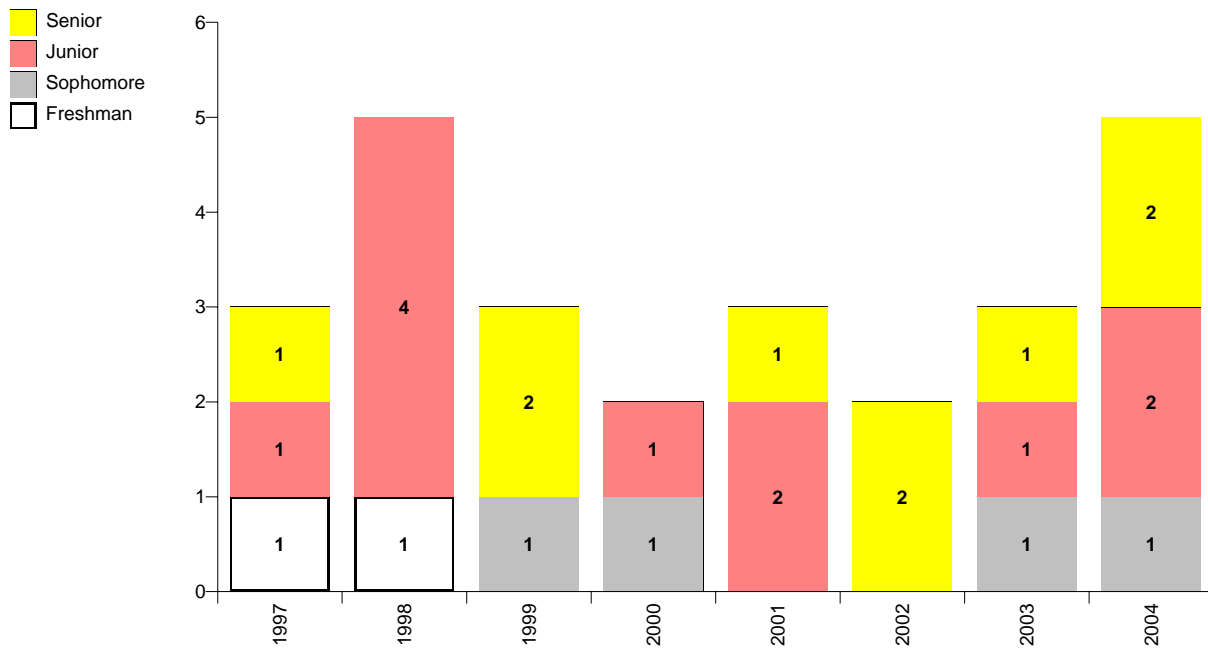
	1998	2000	2001	2002	2003	2004
Freshman				1		1
Sophomore			1	1	3	
Junior	2	2	1		2	1
Senior	1	1	1	1		1
Total	3	3	3	3	5	3

Source: Fall Preliminary Student Data Course Files

**COLLEGE OF ARTS & SCIENCES
 MODERN LANGUAGES
 FRENCH
 ENROLLMENT BY FALL SEMESTER**

FRENCH/BUSINESS

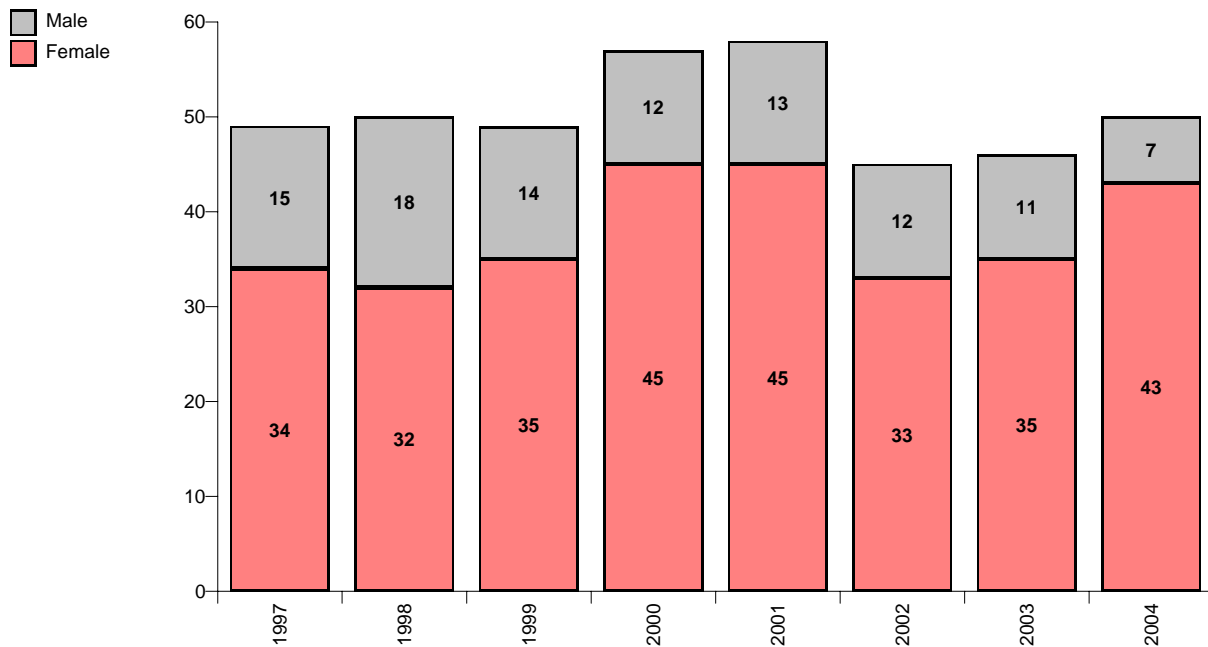
117111



	1997	1998	1999	2000	2001	2002	2003	2004
Freshman	1	1						
Sophomore			1	1			1	1
Junior	1	4		1	2		1	2
Senior	1		2		1	2	1	2
Total	3	5	3	2	3	2	3	5

Source: Fall Preliminary Student Data Course Files

**COLLEGE OF ARTS & SCIENCES
MODERN LANGUAGES
FRENCH
ENROLLMENT BY FALL SEMESTER**

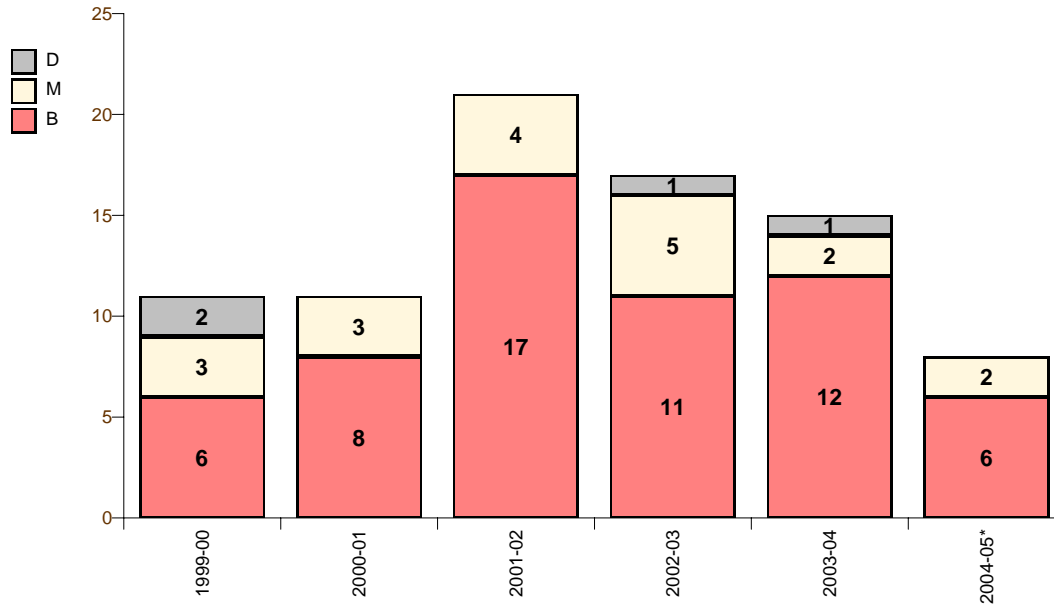


		1997	1998	1999	2000	2001	2002	2003	2004
Female	American Indian or Native Alaskan							1	
	Asian or Pacific Islander	1	1		1			1	
	Black	2	5	4	6	3	2	2	1
	Hispanic	3	1	5	5	2	1	3	4
	Non-Resident Alien	1	2	2	3	5	3	2	1
	White	27	23	24	30	35	27	26	37
Female	Total	34	32	35	45	45	33	35	43
Male	Asian or Pacific Islander					1	1	1	
	Black	3	3	2	2	1	2	3	2
	Hispanic	3	2	1					1
	Non-Resident Alien			1		2	2	1	1
	White	9	13	10	10	9	7	6	3
Male	Total	15	18	14	12	13	12	11	7
	Department Total	49	50	49	57	58	45	46	50

Source: Fall Preliminary Student Data Course Files

**COLLEGE OF ARTS AND SCIENCES
 MODERN LANGUAGES
 FRENCH
 DEGREES AWARDED BY SEMESTER**

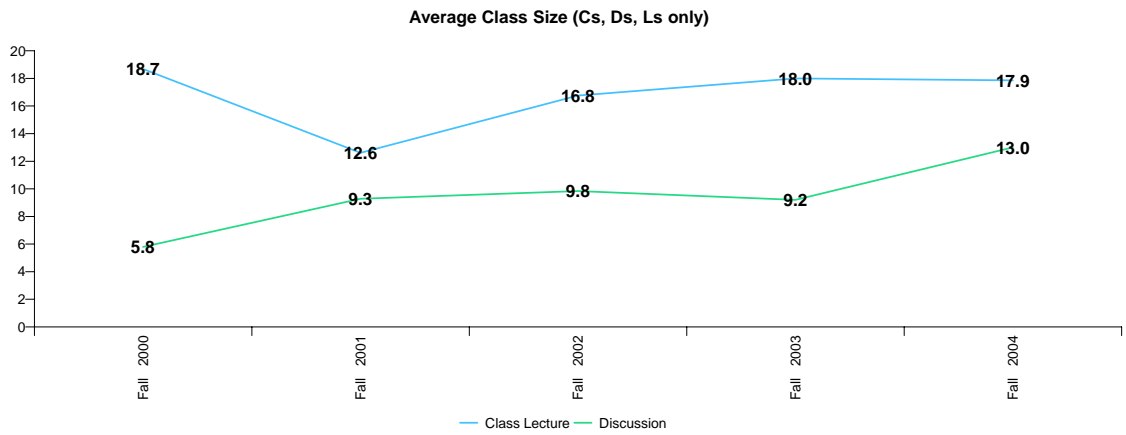
CIP Code: 160901



		Bachelors	Masters	Doctorate	Total
1999-00	Summer '99	3	1		4
	Fall '99	2	1	1	4
	Spring '00	1	1	1	3
1999-00	Total	6	3	2	11
2000-01	Summer '00	2	1		3
	Fall '00	2	1		3
	Spring '01	4	1		5
2000-01	Total	8	3		11
2001-02	Summer '01	7	1		8
	Fall '01	4	1		5
	Spring '02	6	2		8
2001-02	Total	17	4		21
2002-03	Summer '02	2			2
	Fall '02	2			2
	Spring '03	7	5	1	13
2002-03	Total	11	5	1	17
2003-04	Summer '03	3	1		4
	Fall '03	4			4
	Spring '04	5	1	1	7
2003-04	Total	12	2	1	15
2004-05*	Summer '04	3	1		4
	Fall '04	3	1		4
2004-05*	Total	6	2		8

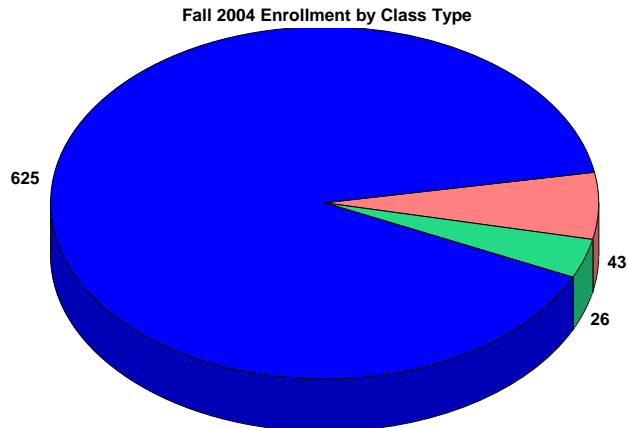
*Spring 2005 degrees awarded are not available at this time.

**COLLEGE OF ARTS & SCIENCES
 MODERN LANGUAGES
 FRENCH
 AVERAGE CLASS SIZE**



		Class Lecture			Discussion		
		Enrollment	Number of Sections	Class Size	Enrollment	Number of Sections	Class Size
Fall 2000	Lower	447	19	23.5			
	Upper	184	11	16.7	22	3	7.3
	Graduate	23	5	4.6	7	2	3.5
	Total	654	35	18.7	29	5	5.8
Fall 2001	Lower	464	21	22.1			
	Upper	119	10	11.9	53	4	13.3
	Graduate	60	20	3.0	12	3	4.0
	Total	643	51	12.6	65	7	9.3
Fall 2002	Lower	448	21	21.3			
	Upper	191	12	15.9	52	4	13.0
	Graduate	48	8	6.0	7	2	3.5
	Total	687	41	16.8	59	6	9.8
Fall 2003	Lower	462	20	23.1			
	Upper	103	8	12.9	41	3	13.7
	Graduate	29	5	5.8	5	2	2.5
	Total	594	33	18.0	46	5	9.2
Fall 2004	Lower	429	21	20.4			
	Upper	173	8	21.6	21	1	21.0
	Graduate	23	6	3.8	5	1	5.0
	Total	625	35	17.9	26	2	13.0

■ Class Lecture
■ Discussion
■ All Others



**COLLEGE OF ARTS & SCIENCES
MODERN LANGUAGES - FRENCH
FUNDABLE STUDENT CREDIT HOURS AND FTE**

SCH Produced

Summer

Level	2001	2002	2003	2004
Lower	540	496	464	488
Upper	51	36	72	45
Graduate	145	114	144	132
Thesis			6	6
Dissertation	38	27	42	30
Total	774	673	728	701

Fall

Level	2001	2002	2003	2004
Lower	1,840	1,784	1,828	1,692
Upper	499	744	438	588
Graduate	225	197	171	96
Thesis		3	6	
Dissertation	40	31	37	51
Total	2,604	2,759	2,480	2,427

Spring

Level	2002	2003	2004	2005
Lower	1,568	1,648	1,584	1,649
Upper	480	471	564	507
Graduate	171	117	118	120
Thesis		6	9	
Dissertation	41	42	64	58
Total	2,260	2,284	2,339	2,334

Fall & Spring

Level	2001-02	2002-03	2003-04	2004-05
Lower	3,408	3,432	3,412	3,341
Upper	979	1,215	1,002	1,095
Graduate	396	314	289	216
Thesis		9	15	
Dissertation	81	73	101	109
Total	4,864	5,043	4,819	4,761

Annual

Level	2001-02	2002-03	2003-04	2004-05
Lower	3,948	3,928	3,876	3,829
Upper	1,030	1,251	1,074	1,140
Graduate	541	428	433	348
Thesis		9	21	6
Dissertation	119	100	143	139
Total	5,638	5,716	5,547	5,462

Annual FTE Contribution

Summer

Level	2001	2002	2003	2004
Lower	13.5	12.4	11.6	12.2
Upper	1.3	0.9	1.8	1.1
Graduate	4.5	3.6	4.5	4.1
Thesis			0.2	0.2
Dissertation	1.2	0.8	1.3	0.9
Total	20.5	17.7	19.4	18.6

Fall

Level	2001	2002	2003	2004
Lower	46.0	44.6	45.7	42.3
Upper	12.5	18.6	11.0	14.7
Graduate	7.0	6.2	5.3	3.0
Thesis		0.1	0.2	
Dissertation	1.3	1.0	1.2	1.6
Total	66.8	70.4	63.3	61.6

Spring

Level	2002	2003	2004	2005
Lower	39.2	41.2	39.6	41.2
Upper	12.0	11.8	14.1	12.7
Graduate	5.3	3.7	3.7	3.8
Thesis		0.2	0.3	
Dissertation	1.3	1.3	2.0	1.8
Total	57.8	58.1	59.7	59.5

Fall & Spring

Level	2001-02	2002-03	2003-04	2004-05
Lower	85.2	85.8	85.3	83.5
Upper	24.5	30.4	25.1	27.4
Graduate	12.4	9.8	9.0	6.8
Thesis		0.3	0.5	
Dissertation	2.5	2.3	3.2	3.4
Total	124.6	128.6	123.0	121.1

Annual

Level	2001-02	2002-03	2003-04	2004-05
Lower	98.7	98.2	96.9	95.7
Upper	25.8	31.3	26.9	28.5
Graduate	16.9	13.4	13.5	10.9
Thesis		0.3	0.7	0.2
Dissertation	3.7	3.1	4.5	4.3
Total	145.1	146.3	142.4	139.6

Source: Final Student Data Course Files except spring 2005 (preliminary)

Note: lower & upper hours are divided by 40 to obtain annual FTE; for graduate, thesis, and dissertation, hours are divided by 32

Distribution of Annual FTE by Semester Within Year

	2001-02	2002-03	2003-04	2004-05
Summer	13.7%	11.8%	13.1%	12.8%
Fall	46.2%	48.3%	44.7%	44.4%
Spring	40.1%	40.0%	42.2%	42.7%
Total	100.0%	100.0%	100.0%	100.0%

**COLLEGE OF ARTS & SCIENCES
MODERN LANGUAGES - FRENCH
NON-FUNDABLE STUDENT CREDIT HOURS AND FTE**

SCH Produced

Summer

Level	2001	2002	2003	2004
Lower	100	60	68	84
Upper	204	192	123	129
Graduate	39	12	15	0
Thesis			0	0
Dissertation	0	0	0	0
Total	343	264	206	213

Fall

Level	2001	2002	2003	2004
Lower	16	8	20	24
Upper	0	3	0	0
Graduate	0	0	0	0
Thesis		0	0	
Dissertation	0	0	0	0
Total	16	11	20	24

Spring

Level	2002	2003	2004	2005
Lower	8	12	8	8
Upper	9	0	3	6
Graduate	0	3	12	0
Thesis		0	0	
Dissertation	0	0	0	0
Total	17	15	23	14

Fall & Spring

Level	2001-02	2002-03	2003-04	2004-05
Lower	24	20	28	32
Upper	9	3	3	6
Graduate	0	3	12	0
Thesis		0	0	
Dissertation	0	0	0	0
Total	33	26	43	38

Annual

Level	2001-02	2002-03	2003-04	2004-05
Lower	124	80	96	116
Upper	213	195	126	135
Graduate	39	15	27	0
Thesis		0	0	0
Dissertation	0	0	0	0
Total	376	290	249	251

Annual FTE Contribution

Summer

Level	2001	2002	2003	2004
Lower	2.5	1.5	1.7	2.1
Upper	5.1	4.8	3.1	3.2
Graduate	1.2	0.4	0.5	0.0
Thesis			0.0	0.0
Dissertation	0.0	0.0	0.0	0.0
Total	8.8	6.7	5.2	5.3

Fall

Level	2001	2002	2003	2004
Lower	0.4	0.2	0.5	0.6
Upper	0.0	0.1	0.0	0.0
Graduate	0.0	0.0	0.0	0.0
Thesis		0.0	0.0	
Dissertation	0.0	0.0	0.0	0.0
Total	0.4	0.3	0.5	0.6

Spring

Level	2002	2003	2004	2005
Lower	0.2	0.3	0.2	0.2
Upper	0.2	0.0	0.1	0.2
Graduate	0.0	0.1	0.4	0.0
Thesis		0.0	0.0	
Dissertation	0.0	0.0	0.0	0.0
Total	0.4	0.4	0.7	0.4

Fall & Spring

Level	2001-02	2002-03	2003-04	2004-05
Lower	0.6	0.5	0.7	0.8
Upper	0.2	0.1	0.1	0.2
Graduate	0.0	0.1	0.4	0.0
Thesis		0.0	0.0	
Dissertation	0.0	0.0	0.0	0.0
Total	0.8	0.7	1.2	1.0

Annual

Level	2001-02	2002-03	2003-04	2004-05
Lower	3.1	2.0	2.4	2.9
Upper	5.3	4.9	3.2	3.4
Graduate	1.2	0.5	0.8	0.0
Thesis		0.0	0.0	0.0
Dissertation	0.0	0.0	0.0	0.0
Total	9.6	7.3	6.4	6.3

Source: Final Student Data Course Files except spring 2005 (preliminary)

Note: lower and upper hours are divided by 40 to obtain annual FTE; for graduate, thesis, and dissertation, hours are divided by 32

Distribution of Annual FTE by Semester Within Year

	2001-02	2002-03	2003-04	2004-05
Summer	91.2%	91.0%	82.7%	84.9%
Fall	4.3%	3.8%	8.0%	9.6%
Spring	4.5%	5.2%	9.2%	5.6%
Total	100.0%	100.0%	100.0%	100.0%

**COLLEGE OF ARTS & SCIENCES
MODERN LANGUAGES - FRENCH
TOTAL STUDENT CREDIT HOURS AND FTE**

SCH Produced

Summer

Level	2001	2002	2003	2004
Lower	640	556	532	572
Upper	255	228	195	174
Graduate	184	126	159	132
Thesis			6	6
Dissertation	38	27	42	30
Total	1,117	937	934	914

Fall

Level	2001	2002	2003	2004
Lower	1,856	1,792	1,848	1,716
Upper	499	747	438	588
Graduate	225	197	171	96
Thesis		3	6	
Dissertation	40	31	37	51
Total	2,620	2,770	2,500	2,451

Spring

Level	2002	2003	2004	2005
Lower	1,576	1,660	1,592	1,657
Upper	489	471	567	513
Graduate	171	120	130	120
Thesis		6	9	
Dissertation	41	42	64	58
Total	2,277	2,299	2,362	2,348

Fall & Spring

Level	2001-02	2002-03	2003-04	2004-05
Lower	3,432	3,452	3,440	3,373
Upper	988	1,218	1,005	1,101
Graduate	396	317	301	216
Thesis		9	15	
Dissertation	81	73	101	109
Total	4,897	5,069	4,862	4,799

Annual

Level	2001-02	2002-03	2003-04	2004-05
Lower	4,072	4,008	3,972	3,945
Upper	1,243	1,446	1,200	1,275
Graduate	580	443	460	348
Thesis		9	21	6
Dissertation	119	100	143	139
Total	6,014	6,006	5,796	5,713

Annual FTE Contribution

Summer

Level	2001	2002	2003	2004
Lower	16.0	13.9	13.3	14.3
Upper	6.4	5.7	4.9	4.4
Graduate	5.8	3.9	5.0	4.1
Thesis			0.2	0.2
Dissertation	1.2	0.8	1.3	0.9
Total	29.3	24.4	24.6	23.9

Fall

Level	2001	2002	2003	2004
Lower	46.4	44.8	46.2	42.9
Upper	12.5	18.7	11.0	14.7
Graduate	7.0	6.2	5.3	3.0
Thesis		0.1	0.2	
Dissertation	1.3	1.0	1.2	1.6
Total	67.2	70.7	63.8	62.2

Spring

Level	2002	2003	2004	2005
Lower	39.4	41.5	39.8	41.4
Upper	12.2	11.8	14.2	12.8
Graduate	5.3	3.8	4.1	3.8
Thesis		0.2	0.3	
Dissertation	1.3	1.3	2.0	1.8
Total	58.3	58.5	60.3	59.8

Fall & Spring

Level	2001-02	2002-03	2003-04	2004-05
Lower	85.8	86.3	86.0	84.3
Upper	24.7	30.5	25.1	27.5
Graduate	12.4	9.9	9.4	6.8
Thesis		0.3	0.5	
Dissertation	2.5	2.3	3.2	3.4
Total	125.4	129.2	124.2	122.0

Annual

Level	2001-02	2002-03	2003-04	2004-05
Lower	101.8	100.2	99.3	98.6
Upper	31.1	36.2	30.0	31.9
Graduate	18.1	13.8	14.4	10.9
Thesis		0.3	0.7	0.2
Dissertation	3.7	3.1	4.5	4.3
Total	154.7	153.6	148.8	145.9

Source: Final Student Data Course Files except spring 2005 (preliminary)

Note: lower & upper hours are divided by 40 to obtain annual FTE; for graduate, thesis, and dissertation, hours are divided by 32

Distribution of Annual FTE by Semester Within Year

	2001-02	2002-03	2003-04	2004-05
Summer	18.6%	15.6%	16.1%	16.0%
Fall	43.6%	46.1%	43.1%	42.9%
Spring	37.9%	38.3%	40.8%	41.1%
Total	100.0%	100.0%	100.0%	100.0%

Modern Languages Faculty Demographics

Name	First	High Degree	Degree University	Appt. Status	Class Code	Administrative Code	Title	Month	Tenure	FSU Hire Date	State Hire Date	Gender	Race
ADOLPH	WINNIFRED	DOCT	University of North Carolina, Chapel Hill	B	9002	C2	Associate Professor	09	1	9/1/79	9/7/79	F	W
ADOLPH	WOLFGANG		Florida State University	B	9121	99	Assistant In	12	3	8/1/94	8/8/94	M	W
ALVAREZ	ENRIQUE	DOCT	University of Illinois	C	9121	99	Assistant Professor	09	3	8/9/04	8/9/04	M	H
ARIAS	SANTA	DOCT	University of Wisconsin	B	9003	99	Assistant Professor	09	2	8/7/96	8/7/96	F	H
BOUTIN	AIMEE	DOCT	Cornell University	B	9003	99	Assistant Professor	09	2	8/7/98	8/7/98	F	B
CAMERON	ROBERT	MA	Florida State University	B	9121	99	Assistant In	12	3	12/2/02	12/2/02	M	W
CAPPUCCIO	BRENDA	DOCT	University of Kentucky	B	9002	99	Associate Professor	09	1	8/1/88	8/8/88	F	W
CLOONAN	WILLIAM	DOCT	University of North Carolina, Chapel Hill	B	9001	99	Professor	09	1	9/1/78	9/8/78	M	W
DARST	DAVID	DOCT	University of Kentucky	B	9001	99	Professor	09	1	9/1/70	9/18/70	M	W
EFIMOV	NINA	DOCT	Florida State University	B	9002	99	Associate Professor	09	1	8/1/91	8/8/91	F	W
FERNANDEZ	ROBERTO	DOCT	Florida State University	B	9001	99	Professor	09	1	9/1/80	9/5/80	M	W
FLEMING	RAYMOND	DOCT	Harvard University	B	9001	99	Professor	09	1	8/8/95	5/8/95	M	B
GALEANO	JUAN	DOCT	University of Kentucky	B	9003	99	Assistant Professor	09	2	8/1/95	8/8/95	M	H
GERATO	ERASMO	DOCT	University of Wisconsin	B	9001	99	Professor	09	1	9/18/70	9/18/70	M	W
HILARY	RICHARD	DOCT	University of Wisconsin	B	9002	99	Associate Professor	09	1	9/1/70	9/18/70	M	W
LAN	FENG	DOCT	University of Notre Dame	B	9003	99	Assistant Professor	09	2	8/9/99	8/9/99	M	A
LEBLANC	LEONA	DOCT	University of Kansas	B	9001	C2	Professor	09	1	9/1/70	9/18/70	F	W
LEESER	MICHAEL	DOCT	University of Illinois	B	9003	99	Assistant Professor	09	2	8/9/04	8/9/04	M	W
LEPARULO	WILLIAM	DOCT	University of Salerno, Italy	B	9001	99	Professor	09	1	9/1/70	9/18/70	M	W
LEUSHUIS	REINER	DOCT	Princeton University	B	9003	99	Assistant Professor	09	2	8/8/00	8/8/00	M	W
MAIER-KATKIN	BIRGIT	DOCT	Pennsylvania State University	B	9003	99	Associate Professor	09	2	12/22/98	12/22/98	F	W
PIETRALUNGA	MARK	DOCT	University of California, Berkeley	B	9001	C1	Professor	09	1	8/1/82	8/6/82	M	W
POEY	DELIA	DOCT	Louisiana State University	B	9003	99	Assistant Professor	09	2	8/7/97	8/7/96	F	H
REGLERO	LARA	DOCT	University of Connecticut	B	9003	99	Assistant Professor	09	2	8/9/04	8/9/04	F	H
REHDER	ERNEST	DOCT	University of Florida	B	9002	99	Associate Professor	09	1	9/1/70	9/18/70	M	W
ROMANCHUK	ROBERT	DOCT	UCLA	B	9003	99	Assistant Professor	09	2	8/8/00	8/8/00	M	W
RUQUIST	REBECCA	DOCT	University of Yale	B	9003	99	Assistant Professor	09	2	8/8/03	8/8/03	F	W
SCHLENOFF	ZEINA	DOCT	University of Massachusetts	B	9121	99	Assistant In	12	3	8/8/02	8/8/02	F	W
SHARPE	PEGGY	DOCT	University of New Mexico	B	9001	99	Professor	12	1	8/8/03	8/8/03	F	W
STANLEY	PATRICIA	DOCT	University of Virginia	B	9001	99	Professor	09	1	9/1/77	9/9/77	F	W
SUALDEA	CARMEN	DOCT	Florida State University	C	9005	99	Lecturer	09	3	8/7/96	8/7/96	F	W
SULLIVAN	JULIA	DOCT	Florida State University	B	9004	99	Instructor	09	3	8/1/95	8/8/95	F	W

Modern Languages Faculty Demographics

Name	First	High Degree	Degree University	Appt. Status	Class Code	Administrative Code	Title	Month	Tenure	FSU Hire Date	State Hire Date	Gender	Race
SUNDERMAN	GRETCHEN	DOCT	Pennsylvania State University	B	9003	99	Assistant Professor	09	2	8/8/03	8/8/03	F	W
TRINCH	SHONNA	DOCT	University of Pittsburgh	B	9003	99	Assistant Professor	09	2	8/8/99	8/8/99	F	W
WAKAMIYA	LISA	DOCT	UCLA	B	9003	99	Assistant Professor	09	2	8/8/03	8/8/03	F	A
WALTERS	LORI	DOCT	Princeton University	B	9001	99	Professor	09	1	8/1/87	8/7/87	F	W
WILLSTEDT	MARIA	DOCT	University of Yale	B	9003	99	Assistant Professor	09	2	8/9/04	8/9/04	F	W
YASUHARA	YASHIHARA	DOCT	Pennsylvania State University	B	9003	99	Assistant Professor	09	2	8/8/03	8/8/03	M	A

Last Updated on 4/29/05

By Terri Johnson

Modern Languages E & G Student Credit Hours and Headcount Productivity By Instructor Type

	Student			Headcount/			Student			Headcount/		
	FTE	Credit Hrs	SCH/FTE	Headcount	FTE		FTE	Credit Hrs	SCH/FTE	Headcount	FTE	
<u>Fall 1999</u>												
Faculty	37.73	4,402.0	116.7	1,414	37.5	Faculty	37.58	3,979.0	105.9	1,286	34.2	
OPS Regular Faculty	0	0.0	0.0	0	0.0	OPS Regular Faculty	0	0.0	0.0	0	0.0	
OPS Faculty Adjuncts	1.43	476.0	332.9	119	83.2	OPS Faculty Adjuncts	1.96	311.0	158.7	83	42.3	
Graduate Assistants	32.18	10,752.0	334.1	2,778	86.3	Graduate Assistants	29.82	8,077.0	270.9	2,089	70.1	
A & P / USPS	0	0.0	0.0	0	0.0	A & P / USPS	0	0.0	0.0	0	0.0	
Others	0.25	80.0	320.0	20	80.0	Others	0.46	192.0	417.4	48	104.3	
	71.59	15,710.0	219.4	4,331	60.5		69.82	12,559.0	179.9	3,506	50.2	
<u>Fall 2000</u>						<u>Spring 2001</u>						
Faculty	38	4,193.0	110.3	1,409.0	37.1	Faculty	37.94	4,334.0	114.2	1,453	38.3	
OPS Regular Faculty	0	0.0	0.0	0	0.0	OPS Regular Faculty	0	0.0	0.0	0	0.0	
OPS Faculty Adjuncts	3.07	1,321.0	430.3	339.0	110.4	OPS Faculty Adjuncts	3.01	1,183.0	393.0	315	104.7	
Graduate Assistants	27.21	8,484.0	311.8	2,158.0	79.3	Graduate Assistants	28.46	7,887.0	277.1	2,006	70.5	
A & P / USPS	0	0.0	0.0	0	0.0	A & P / USPS	0	0.0	0.0	0	0.0	
Others	1.25	117.0	93.6	31.0	24.8	Others	0.75	316.0	421.3	79	105.3	
	69.53	14,115.0	203.0	3,937	56.6		70.16	13,720.0	195.6	3,853	54.9	
<u>Fall 2001</u>						<u>Spring 2002</u>						
Faculty	37.04	4,273	115.4	1,461	39.4	Faculty	37.1	4,656	125.5	1,637	44.1	
OPS Regular Faculty	0	0	0.0	0	0.0	OPS Regular Faculty	0	0	0.0	0	0.0	
OPS Faculty Adjuncts	4.45	1,797	403.8	495	111.2	OPS Faculty Adjuncts	3.21	1,077	335.5	304	94.7	
Graduate Assistants	27.86	8,633	309.9	2,162	77.6	Graduate Assistants	29.05	8,298	285.6	2,082	71.7	
A & P / USPS	0	0	0.0	0	0.0	A & P / USPS	0	0	0.0	0	0.0	
Others	1.25	129	103.2	34	27.2	Others	0.25	104	416.0	26	104.0	
	70.6	14,832	210.1	4,152	58.8		69.61	14,135	203.1	4,049	58.2	
<u>Fall 2002</u>						<u>Spring 2003</u>						
Faculty	37.68	4,733.0	125.6	1,640	43.5	Faculty	36.15	4,203.0	116.3	1,425	39.4	
OPS Regular Faculty	0	0.0	0.0	0	0.0	OPS Regular Faculty	0	0.0	0.0	0	0.0	
OPS Faculty Adjuncts	2.04	757.0	371.1	219	107.4	OPS Faculty Adjuncts	2.33	766.0	328.8	250	107.3	
Graduate Assistants	27.68	9,553.0	345.1	2,432	87.9	Graduate Assistants	28.39	9,381.0	330.4	2,394	84.3	
A & P / USPS	0	0.0	0.0	0	0.0	A & P / USPS	0	0.0	0.0	0	0.0	
Others	1.58	300.0	189.9	78	49.4	Others	0.42	199.0	473.8	50	119.0	
	68.98	15,343.0	222.4	4,369	63.3		67.29	14,549.0	216.2	4,119	61.2	
<u>Fall 2003</u>						<u>Spring 2004</u>						
Faculty	37	4,659.4	125.9	1,559	42.1	Faculty	38	4,461.0	117.4	1,422	37.4	
OPS Regular Faculty	0	0.0	0.0	0	0.0	OPS Regular Faculty	0	0.0	0.0	0	0.0	
OPS Faculty Adjuncts	1.63	608.0	373.0	170	104.3	OPS Faculty Adjuncts	1.26	482.0	382.5	131	104.0	
Graduate Assistants	33.6	9,855.6	293.3	2,492	74.2	Graduate Assistants	35	9,583.0	273.8	2,459	70.3	
A & P / USPS	0	0.0	0.0	0	0.0	A & P / USPS	0	0.0	0.0	0	0.0	
Others	1	18.0	18.0	6	6.0	Others	0	0.0	0.0	0	0.0	
	73.23	15,141.0	206.8	4,227	57.7		74.26	14,526.0	195.6	4,012	54.0	

Modern Languages C & G Student Credit Hours and Headcount Productivity By Instructor Type

	Student			Headcount/			Student			Headcount/		
	FTE	Credit Hrs	SCH/FTE	Headcount	FTE	Headcount/	FTE	Credit Hrs	SCH/FTE	Headcount	FTE	Headcount/
<u>Fall 1999</u>												
Faculty	0	0.0	0.0	0	0.0	0.0	0	0.0	0.0	0	0.0	0.0
OPS Regular Faculty	0	0.0	0.0	0	0.0	0.0	0	0.0	0.0	0	0.0	0.0
OPS Faculty Adjuncts	0	0.0	0.0	0	0.0	0.0	0	0.0	0.0	0	0.0	0.0
Graduate Assistants	0	0.0	0.0	0	0.0	0.0	0	0.0	0.0	0	0.0	0.0
A & P / USPS	0	0.0	0.0	0	0.0	0.0	0	0.0	0.0	0	0.0	0.0
Others	0.5	204.0	408.0	51	102.0	102.0	0.7	168.0	240.0	42	60.0	60.0
	0.5	204.0	408.0	51	102.0		0.7	168.0	240.0	42	60.0	60.0
<u>Fall 2000</u>												
Faculty	0	0.0	0.0	0	0.0	0.0	0	0.0	0.0	0	0.0	0.0
OPS Regular Faculty	0	0.0	0.0	0	0.0	0.0	0	0.0	0.0	0	0.0	0.0
OPS Faculty Adjuncts	0	0.0	0.0	0	0.0	0.0	0	0.0	0.0	0	0.0	0.0
Graduate Assistants	0	0.0	0.0	0	0.0	0.0	0	0.0	0.0	0	0.0	0.0
A & P / USPS	0	0.0	0.0	0	0.0	0.0	0	0.0	0.0	0	0.0	0.0
Others	0	0.0	0.0	0	0.0	0.0	0	0.0	0.0	0	0.0	0.0
	0	0.0	0.0	0	0.0	0.0	0	0.0	0.0	0	0.0	0.0
<u>Fall 2001</u>												
Faculty	0	0.0	0.0	0	0.0	0.0	0	0.0	0.0	0	0.0	0.0
OPS Regular Faculty	0	0.0	0.0	0	0.0	0.0	0	0.0	0.0	0	0.0	0.0
OPS Faculty Adjuncts	0	0.0	0.0	0	0.0	0.0	0	0.0	0.0	0	0.0	0.0
Graduate Assistants	0	0.0	0.0	0	0.0	0.0	0	0.0	0.0	0	0.0	0.0
A & P / USPS	0	0.0	0.0	0	0.0	0.0	0	0.0	0.0	0	0.0	0.0
Others	0	0.0	0.0	0	0.0	0.0	0	0.0	0.0	0	0.0	0.0
	0	0.0	0.0	0	0.0	0.0	0	0.0	0.0	0	0.0	0.0
<u>Fall 2002</u>												
Faculty	0	0.0	0.0	0	0.0	0.0	0	0.0	0.0	0	0.0	0.0
OPS Regular Faculty	0	0.0	0.0	0	0.0	0.0	0	0.0	0.0	0	0.0	0.0
OPS Faculty Adjuncts	0	0.0	0.0	0	0.0	0.0	0	0.0	0.0	0	0.0	0.0
Graduate Assistants	0	0.0	0.0	0	0.0	0.0	0	0.0	0.0	0	0.0	0.0
A & P / USPS	0	0.0	0.0	0	0.0	0.0	0	0.0	0.0	0	0.0	0.0
Others	0.5	180.0	360.0	45	90.0	90.0	0	0.0	0.0	0	0.0	0.0
	0.5	180.0	360.0	45	90.0		0	0.0	0.0	0	0.0	0.0
<u>Fall 2003</u>												
Faculty	0	0.0	0.0	0	0.0	0.0	0	0.0	0.0	0	0.0	0.0
OPS Regular Faculty	0	0.0	0.0	0	0.0	0.0	0	0.0	0.0	0	0.0	0.0
OPS Faculty Adjuncts	0	0.0	0.0	0	0.0	0.0	0	0.0	0.0	0	0.0	0.0
Graduate Assistants	0	0.0	0.0	0	0.0	0.0	0	0.0	0.0	0	0.0	0.0
A & P / USPS	0	0.0	0.0	0	0.0	0.0	0	0.0	0.0	0	0.0	0.0
Others	0	0.0	0.0	0	0.0	0.0	0	0.0	0.0	0	0.0	0.0
	0	0.0	0.0	0	0.0	0.0	0	0.0	0.0	0	0.0	0.0
<u>Fall 2004</u>												
Faculty	0	0.0	0.0	0	0.0	0.0	0	0.0	0.0	0	0.0	0.0
OPS Regular Faculty	0	0.0	0.0	0	0.0	0.0	0	0.0	0.0	0	0.0	0.0
OPS Faculty Adjuncts	0	0.0	0.0	0	0.0	0.0	0	0.0	0.0	0	0.0	0.0
Graduate Assistants	0	0.0	0.0	0	0.0	0.0	0	0.0	0.0	0	0.0	0.0
A & P / USPS	0	0.0	0.0	0	0.0	0.0	0	0.0	0.0	0	0.0	0.0
Others	0	0.0	0.0	0	0.0	0.0	0	0.0	0.0	0	0.0	0.0
	0	0.0	0.0	0	0.0	0.0	0	0.0	0.0	0	0.0	0.0

1330 - Modern Lanaguages - Faculty Courses & Hours

Fall 1999 - Spring 2000			Organized Classes (C,D,L)								
Faculty Member	Class	FTE	SCH		Total	Headcount		Total	Sections		Total
			UGrad	Grad	SCH	UGrad	Grad	HC	UGrad	Grad	#Sec.
ADOLPH	9002	2.00	90.0	-	90.0	30.0	-	30.0	2.0	-	2.0
ADOLPH	9120	2.00	213.0	12.0	225.0	61.0	4.0	65.0	4.0	1.0	5.0
ALLAIRE	9002	2.00	228.0	12.0	240.0	71.0	4.0	75.0	6.0	1.0	7.0
ARIAS	9003	2.00	174.0	81.0	255.0	58.0	27.0	85.0	3.0	1.0	4.0
BOUTIN	9003	2.00	177.0	21.0	198.0	51.0	6.0	57.0	3.0	2.0	5.0
CANCALON	9001	2.00	175.0	27.0	202.0	50.0	8.0	58.0	4.0	2.0	6.0
CAPPUCCIO	9002	2.00	129.0	51.0	180.0	43.0	16.0	59.0	3.0	3.0	6.0
CLOONAN	9001	1.31	172.0	78.0	250.0	58.0	25.0	83.0	4.0	5.0	9.0
DANGLER	9003	2.00	114.0	33.0	147.0	38.0	11.0	49.0	4.0	1.0	5.0
DARST	9001	2.00	153.0	60.0	213.0	51.0	20.0	71.0	3.0	2.0	5.0
DIVINEY	9121	2.00	347.0	12.0	359.0	91.0	4.0	95.0	4.0	1.0	5.0
EFIMOV	9002	2.00	171.0	57.0	228.0	57.0	19.0	76.0	5.0	6.0	11.0
FERNANDEZ	9001	2.00	210.0	-	210.0	70.0	-	70.0	4.0	-	4.0
FLEMING	9001	2.00	251.0	48.0	299.0	68.0	16.0	84.0	5.0	1.0	6.0
GALEANO	9002	2.00	231.0	27.0	258.0	77.0	9.0	86.0	3.0	1.0	4.0
GERATO	9001	2.00	218.0	6.0	224.0	59.0	2.0	61.0	6.0	1.0	7.0
GRAHAM-JONES	9002	2.00	-	12.0	12.0	-	2.0	2.0	-	1.0	1.0
HILARY	9002	2.00	422.0	3.0	425.0	106.0	1.0	107.0	6.0	1.0	7.0
LAN	9003	2.00	271.0	3.0	274.0	68.0	1.0	69.0	5.0	1.0	6.0
LAUNER	9001	2.00	96.0	6.0	102.0	32.0	2.0	34.0	4.0	2.0	6.0
LEBLANC	9001	2.00	69.0	19.0	88.0	23.0	11.0	34.0	2.0	4.0	6.0
LEPARULO	9001	2.00	387.0	-	387.0	111.0	-	111.0	7.0	-	7.0
MAIER-KATKIN	9003	2.00	150.0	9.0	159.0	50.0	3.0	53.0	4.0	1.0	5.0
NARA	9002	2.00	461.0	-	461.0	116.0	-	116.0	7.0	-	7.0
PICHUGIN	9003	2.00	93.0	30.0	123.0	31.0	10.0	41.0	5.0	3.0	8.0
PIETRALUNGA	9001	2.00	36.0	7.0	43.0	12.0	3.0	15.0	2.0	3.0	5.0
POEY	9003	2.00	174.0	48.0	222.0	58.0	16.0	74.0	3.0	2.0	5.0
REHDER	9002	2.00	33.0	87.0	120.0	11.0	29.0	40.0	1.0	4.0	5.0
RUPPERT	9001	1.00	96.0	12.0	108.0	32.0	4.0	36.0	2.0	1.0	3.0
SPACAGNA	9001	2.00	90.0	24.0	114.0	30.0	8.0	38.0	5.0	2.0	7.0
STANLEY	9001	2.00	81.0	69.0	150.0	27.0	23.0	50.0	3.0	3.0	6.0
STEPP-GREANY	9120	2.00	35.0	3.0	38.0	11.0	1.0	12.0	2.0	1.0	3.0
SUALDEA	9005	2.00	432.0	-	432.0	144.0	-	144.0	8.0	-	8.0
SULLIVAN	9004	1.00	537.0	-	537.0	179.0	-	179.0	8.0	-	8.0
TRINCH	9003	2.00	207.0	9.0	216.0	69.0	3.0	72.0	4.0	2.0	6.0
WALTERS	9001	2.00	36.0	12.0	48.0	12.0	4.0	16.0	2.0	1.0	3.0
WYATT	9001	2.00	101.0	36.0	137.0	32.0	12.0	44.0	5.0	1.0	6.0
TOTALS			6,860.0	914.0	7,774.0	2,087.0	304.0	2,391.0	148.0	61.0	209.0
AVERAGE PER FACULTY			190.6	29.5	210.1	58.0	9.8	64.6	4.1	2.0	5.6

1330 - Modern Lanaguages - Faculty Courses & Hours

Fall 1999 - Spring 2000			Individualized (G,T,I,O,P,R,S,Z)								
Faculty Member	Class	FTE	SCH		Total SCH	Headcount		Total HC	Sections		Total #Sec.
			UGrad	Grad		UGrad	Grad		UGrad	Grad	
ADOLPH	9002	2.00	-	19.0	19.0	-	14.0	14.0	-	7.0	7.0
ADOLPH	9120	2.00	1.0	-	1.0	1.0	-	1.0	1.0	-	1.0
ALLAIRE	9002	2.00	-	6.0	6.0	-	2.0	2.0	-	2.0	2.0
ARIAS	9003	2.00	3.0	31.0	34.0	1.0	5.0	6.0	1.0	2.0	3.0
BOUTIN	9003	2.00	-	7.0	7.0	-	3.0	3.0	-	3.0	3.0
CANCALON	9001	2.00	-	12.0	12.0	-	4.0	4.0	-	2.0	2.0
CAPPUCCIO	9002	2.00	3.0	43.0	46.0	1.0	12.0	13.0	1.0	5.0	6.0
CLOONAN	9001	1.31	9.0	31.0	40.0	3.0	11.0	14.0	3.0	8.0	11.0
DANGLER	9003	2.00	6.0	-	6.0	1.0	-	1.0	1.0	-	1.0
DARST	9001	2.00	-	28.0	28.0	-	5.0	5.0	-	4.0	4.0
DIVINEY	9121	2.00	6.0	3.0	9.0	1.0	1.0	2.0	1.0	1.0	2.0
EFIMOV	9002	2.00	3.0	21.0	24.0	1.0	5.0	6.0	1.0	4.0	5.0
FERNANDEZ	9001	2.00	-	34.0	34.0	-	6.0	6.0	-	4.0	4.0
FLEMING	9001	2.00	9.0	18.0	27.0	3.0	6.0	9.0	2.0	4.0	6.0
GALEANO	9002	2.00	-	30.0	30.0	-	6.0	6.0	-	5.0	5.0
GERATO	9001	2.00	-	6.0	6.0	-	2.0	2.0	-	2.0	2.0
GRAHAM-JONES	9002	2.00	-	22.0	22.0	-	4.0	4.0	-	4.0	4.0
HILARY	9002	2.00	-	3.0	3.0	-	1.0	1.0	-	1.0	1.0
LAN	9003	2.00	6.0	-	6.0	2.0	-	2.0	2.0	-	2.0
LAUNER	9001	2.00	18.0	6.0	24.0	6.0	6.0	12.0	3.0	3.0	6.0
LEBLANC	9001	2.00	3.0	35.0	38.0	1.0	31.0	32.0	1.0	8.0	9.0
LEPARULO	9001	2.00	18.0	8.0	26.0	6.0	7.0	13.0	3.0	4.0	7.0
MAIER-KATKIN	9003	2.00	3.0	-	3.0	1.0	-	1.0	1.0	-	1.0
NARA	9002	2.00	1.0	8.0	9.0	1.0	3.0	4.0	1.0	3.0	4.0
PICHUGIN	9003	2.00	-	-	-	-	-	-	-	-	-
PIETRALUNGA	9001	2.00	-	-	-	-	-	-	-	-	-
POEY	9003	2.00	-	19.0	19.0	-	3.0	3.0	-	3.0	3.0
REHDER	9002	2.00	-	4.0	4.0	-	27.0	27.0	-	4.0	4.0
RUPPERT	9001	1.00	3.0	9.0	12.0	1.0	2.0	3.0	1.0	2.0	3.0
SPACAGNA	9001	2.00	7.0	25.0	32.0	3.0	6.0	9.0	2.0	4.0	6.0
STANLEY	9001	2.00	-	-	-	-	18.0	18.0	-	1.0	1.0
STEPP-GREANY	9120	2.00	-	22.0	22.0	-	75.0	75.0	-	5.0	5.0
SUALDEA	9005	2.00	-	-	-	-	-	-	-	-	-
SULLIVAN	9004	1.00	-	-	-	-	-	-	-	-	-
TRINCH	9003	2.00	3.0	1.0	4.0	1.0	1.0	2.0	1.0	1.0	2.0
WALTERS	9001	2.00	-	24.0	24.0	-	2.0	2.0	-	2.0	2.0
WYATT	9001	2.00	30.0	-	30.0	7.0	-	7.0	1.0	-	1.0
TOTALS			132.0	475.0	607.0	41.0	268.0	309.0	27.0	98.0	125.0
AVERAGE PER FACULTY			7.3	17.6	19.0	2.3	9.6	9.4	1.5	3.5	3.8

1330 - Modern Lanaguages - Faculty Courses & Hours

Fall 1999 - Spring 2000			All Types								
			SCH		TOTAL	Headcount		TOTAL	Sections		TOTAL
Faculty Member	Class	FTE	UGrad	Grad	SCH	UGrad	Grad	HC	UGrad	Grad	#Sec.
ADOLPH	9002	2.00	90.0	19.0	109.0	30.0	14.0	44.0	2.0	7.0	9.0
ADOLPH	9120	2.00	214.0	12.0	226.0	62.0	4.0	66.0	5.0	1.0	6.0
ALLAIRE	9002	2.00	228.0	18.0	246.0	71.0	6.0	77.0	6.0	3.0	9.0
ARIAS	9003	2.00	177.0	112.0	289.0	59.0	32.0	91.0	4.0	3.0	7.0
BOUTIN	9003	2.00	177.0	28.0	205.0	51.0	9.0	60.0	3.0	5.0	8.0
CANCALON	9001	2.00	175.0	39.0	214.0	50.0	12.0	62.0	4.0	4.0	8.0
CAPPUCCIO	9002	2.00	132.0	94.0	226.0	44.0	28.0	72.0	4.0	8.0	12.0
CLOONAN	9001	1.31	181.0	109.0	290.0	61.0	36.0	97.0	7.0	13.0	20.0
DANGLER	9003	2.00	120.0	33.0	153.0	39.0	11.0	50.0	5.0	1.0	6.0
DARST	9001	2.00	153.0	88.0	241.0	51.0	25.0	76.0	3.0	6.0	9.0
DIVINEY	9121	2.00	353.0	15.0	368.0	92.0	5.0	97.0	5.0	2.0	7.0
EFIMOV	9002	2.00	174.0	78.0	252.0	58.0	24.0	82.0	6.0	10.0	16.0
FERNANDEZ	9001	2.00	210.0	34.0	244.0	70.0	6.0	76.0	4.0	4.0	8.0
FLEMING	9001	2.00	260.0	66.0	326.0	71.0	22.0	93.0	7.0	5.0	12.0
GALEANO	9002	2.00	231.0	57.0	288.0	77.0	15.0	92.0	3.0	6.0	9.0
GERATO	9001	2.00	218.0	12.0	230.0	59.0	4.0	63.0	6.0	3.0	9.0
GRAHAM-JONES	9002	2.00	-	34.0	34.0	-	6.0	6.0	-	5.0	5.0
HILARY	9002	2.00	422.0	6.0	428.0	106.0	2.0	108.0	6.0	2.0	8.0
LAN	9003	2.00	277.0	3.0	280.0	70.0	1.0	71.0	7.0	1.0	8.0
LAUNER	9001	2.00	114.0	12.0	126.0	38.0	8.0	46.0	7.0	5.0	12.0
LEBLANC	9001	2.00	72.0	54.0	126.0	24.0	42.0	66.0	3.0	12.0	15.0
LEPARULO	9001	2.00	405.0	8.0	413.0	117.0	7.0	124.0	10.0	4.0	14.0
MAIER-KATKIN	9003	2.00	153.0	9.0	162.0	51.0	3.0	54.0	5.0	1.0	6.0
NARA	9002	2.00	462.0	8.0	470.0	117.0	3.0	120.0	8.0	3.0	11.0
PICHUGIN	9003	2.00	93.0	30.0	123.0	31.0	10.0	41.0	5.0	3.0	8.0
PIETRALUNGA	9001	2.00	36.0	7.0	43.0	12.0	3.0	15.0	2.0	3.0	5.0
POEY	9003	2.00	174.0	67.0	241.0	58.0	19.0	77.0	3.0	5.0	8.0
REHDER	9002	2.00	33.0	91.0	124.0	11.0	56.0	67.0	1.0	8.0	9.0
RUPPERT	9001	1.00	99.0	21.0	120.0	33.0	6.0	39.0	3.0	3.0	6.0
SPACAGNA	9001	2.00	97.0	49.0	146.0	33.0	14.0	47.0	7.0	6.0	13.0
STANLEY	9001	2.00	81.0	69.0	150.0	27.0	41.0	68.0	3.0	4.0	7.0
STEPP-GREANY	9120	2.00	35.0	25.0	60.0	11.0	76.0	87.0	2.0	6.0	8.0
SUALDEA	9005	2.00	432.0	-	432.0	144.0	-	144.0	8.0	-	8.0
SULLIVAN	9004	1.00	537.0	-	537.0	179.0	-	179.0	8.0	-	8.0
TRINCH	9003	2.00	210.0	10.0	220.0	70.0	4.0	74.0	5.0	3.0	8.0
WALTERS	9001	2.00	36.0	36.0	72.0	12.0	6.0	18.0	2.0	3.0	5.0
WYATT	9001	2.00	131.0	36.0	167.0	39.0	12.0	51.0	6.0	1.0	7.0
TOTALS			6,992.0	1,389.0	8,381.0	2,128.0	572.0	2,700.0	175.0	159.0	334.0
AVERAGE PER FACULTY			194.2	39.7	226.5	59.1	16.3	73.0	4.9	4.5	9.0

1330 - Modern Languages - Faculty Courses & Hours

Fall 2003 - Spring 2004			Organized Classes (C,D,L)								
Faculty Member	Class	FTE	SCH		Total SCH	Headcount		Total HC	Sections		Total #Sec.
			UGrad	Grad		UGrad	Grad		UGrad	Grad	
ADOLPH	9002	2.00	132.2	-	132.2	32.2	-	32.2	2.2	-	2.2
ADOLPH	9120	2.00	30.0	6.0	36.0	10.0	2.0	12.0	2.0	1.0	3.0
ARIAS	9002	2.00	126.0	96.0	222.0	42.0	26.0	68.0	3.0	2.0	5.0
BOUTIN	9003	2.00	129.0	51.0	180.0	43.0	16.0	59.0	4.0	2.0	6.0
CAPPUCCIO	9002	2.00	90.0	131.0	221.0	30.0	67.0	97.0	4.0	11.0	15.0
CLOONAN	9001	2.00	236.0	51.0	287.0	66.0	13.0	79.0	5.0	6.0	11.0
EFIMOV	9002	2.00	297.0	42.0	339.0	99.0	13.0	112.0	7.0	6.0	11.0
FERNANDEZ	9001	2.00	285.0	7.0	292.0	95.0	2.0	97.0	4.0	2.0	9.0
FLEMING	9001	2.00	212.0	12.0	224.0	62.0	4.0	66.0	5.0	1.0	5.0
GALEANO	9002	2.00	276.0	9.0	285.0	92.0	5.0	97.0	4.0	2.0	7.0
GERATO	9001	2.00	264.0	60.0	324.0	88.0	20.0	108.0	5.0	2.0	6.0
GOMARIZ	9003	2.00	117.0	58.0	175.0	39.0	19.0	58.0	2.0	5.0	10.0
GRAHAM-JONES	9002	2.00	162.0	52.0	214.0	54.0	13.0	67.0	3.0	4.0	6.0
HARGREAVES	9009	2.00	57.0	24.0	81.0	19.0	4.0	23.0	3.0	4.0	7.0
HILARY	9002	2.00	335.0	54.0	389.0	88.0	13.0	101.0	5.0	3.0	6.0
LAN	9003	2.00	377.0	9.0	386.0	109.0	3.0	112.0	6.0	2.0	7.0
LEBLANC	9001	2.00	477.0	-	477.0	130.0	-	130.0	7.0	-	6.0
LEPARULO	9001	1.00	24.0	21.0	45.0	3.2	7.0	10.2	1.2	2.0	9.0
LEUSHUIS	9003	1.00	123.0	12.0	135.0	41.0	3.0	44.0	2.0	2.0	3.2
MAIER-KATKIN	9003	1.00	69.0	12.0	81.0	23.0	4.0	27.0	2.0	1.0	3.0
MITCHELL	9003	2.00	56.0	21.0	77.0	14.2	7.0	21.2	2.2	1.0	3.0
PIETRALUNGA	9001	2.00	87.0	4.0	91.0	29.0	2.0	31.0	2.0	2.0	4.2
POEY	9003	1.00	246.0	48.0	294.0	82.0	16.0	98.0	4.0	3.0	5.0
REHDER	9002	2.00	288.0	58.0	346.0	96.0	17.0	113.0	2.0	4.0	6.0
ROMANCHUK	9003	2.00	123.0	21.0	144.0	41.0	4.0	45.0	4.0	4.0	8.0
RUPPERT	9001	2.00	165.0	54.0	219.0	55.0	14.0	69.0	3.0	2.0	4.0
RUQUIST	9003	2.00	200.0	6.0	206.0	58.0	2.0	60.0	3.0	1.0	5.0
SCHLENOFF	9121	2.00	354.0	60.0	414.0	94.0	20.0	114.0	8.0	8.0	11.0
SHARPE	9001	1.00	36.0	-	36.0	12.0	-	12.0	1.0	-	3.0
STANLEY	9001	2.00	87.0	51.0	138.0	29.0	17.0	46.0	3.0	3.0	11.0
STEPP-GREANY	9120	2.00	124.2	15.0	139.2	17.6	4.0	21.6	1.6	2.0	3.0
SULLIVAN	9121	2.00	540.0	-	540.0	180.0	-	180.0	8.0	-	3.0
SUNDERMAN	9003	2.00	234.0	78.0	312.0	78.0	20.0	98.0	4.0	3.0	4.6
WAKAMIYA	9003	2.00	262.0	-	262.0	77.0	-	77.0	4.0	-	8.0
WALTERS	9001	2.00	138.0	20.0	158.0	46.0	7.0	53.0	4.0	3.0	7.0
YASUHARA	9003	2.00	394.0	9.0	403.0	103.0	3.0	106.0	6.0	3.0	6.0
TOTALS			7,152.4	1,152.0	8,304.4	2,177.1	367.0	2,544.1	136.1	97.0	233.1
AVERAGE PER FACULTY			198.7	37.2	230.7	60.5	11.8	70.7	3.9	3.1	6.5

1330 - Modern Languages - Faculty Courses & Hours

Fall 2003 - Spring 2004			Individualized (G,T,I,O,P,R,S,Z)								
			SCH		Total SCH	Headcount		Total HC	Sections		Total #Sec.
Faculty Member	Class	FTE	UGrad	Grad	Total SCH	UGrad	Grad	Total HC	UGrad	Grad	Total #Sec.
ADOLPH	9002	2.00	3.0	6.0	9.0	1.0	8.0	9.0	1.0	3.0	4.0
ADOLPH	9120	2.00	-	-	-	-	-	-	-	-	-
ARIAS	9002	2.00	3.0	30.0	33.0	1.0	4.0	5.0	1.0	4.0	5.0
BOUTIN	9003	2.00	-	24.0	24.0	-	3.0	3.0	-	3.0	3.0
CAPPUCCIO	9002	2.00	15.0	87.0	102.0	3.0	15.0	18.0	2.0	6.0	8.0
CLOONAN	9001	2.00	21.0	184.0	205.0	7.0	41.0	48.0	5.0	12.0	17.0
EFIMOV	9002	2.00	-	16.0	16.0	-	4.0	4.0	-	2.0	2.0
FERNANDEZ	9001	2.00	-	28.0	28.0	-	5.0	5.0	-	4.0	4.0
FLEMING	9001	2.00	-	13.0	13.0	-	5.0	5.0	-	5.0	5.0
GALEANO	9002	2.00	3.0	6.0	9.0	1.0	2.0	3.0	1.0	2.0	3.0
GERATO	9001	2.00	9.0	27.0	36.0	3.0	24.0	27.0	2.0	5.0	7.0
GOMARIZ	9003	2.00	-	58.0	58.0	-	9.0	9.0	-	5.0	5.0
GRAHAM-JONES	9002	2.00	-	44.0	44.0	-	10.0	10.0	-	7.0	7.0
HARGREAVES	9009	2.00	-	15.0	15.0	-	5.0	5.0	-	1.0	1.0
HILARY	9002	2.00	-	12.0	12.0	-	28.0	28.0	-	6.0	6.0
LAN	9003	2.00	4.0	-	4.0	2.0	3.0	5.0	2.0	2.0	4.0
LEBLANC	9001	2.00	-	2.0	2.0	-	2.0	2.0	-	2.0	2.0
LEPARULO	9001	1.00	-	8.0	8.0	-	7.0	7.0	-	1.0	1.0
LEUSHUIS	9003	1.00	-	3.0	3.0	-	1.0	1.0	-	1.0	1.0
MAIER-KATKIN	9003	1.00	-	3.0	3.0	-	1.0	1.0	-	1.0	1.0
MITCHELL	9003	2.00	6.0	9.0	15.0	2.0	26.0	28.0	2.0	3.0	5.0
PIETRALUNGA	9001	2.00	3.0	6.0	9.0	1.0	3.0	4.0	1.0	3.0	4.0
POEY	9003	1.00	3.0	35.0	38.0	1.0	7.0	8.0	1.0	6.0	7.0
REHDER	9002	2.00	3.0	9.0	12.0	1.0	39.0	40.0	1.0	5.0	6.0
ROMANCHUK	9003	2.00	12.0	3.0	15.0	4.0	1.0	5.0	4.0	1.0	5.0
RUPPERT	9001	2.00	9.0	33.0	42.0	3.0	24.0	27.0	3.0	8.0	11.0
RUQUIST	9003	2.00	-	-	-	-	-	-	-	-	-
SCHLENOFF	9121	2.00	10.0	-	10.0	4.0	-	4.0	4.0	-	4.0
SHARPE	9001	1.00	-	-	-	-	-	-	-	-	-
STANLEY	9001	2.00	-	6.0	6.0	-	17.0	17.0	-	2.0	2.0
STEPP-GREANY	9120	2.00	-	7.0	7.0	-	73.0	73.0	-	3.0	3.0
SULLIVAN	9121	2.00	-	-	-	-	-	-	-	-	-
SUNDERMAN	9003	2.00	3.0	6.0	9.0	1.0	2.0	3.0	1.0	2.0	3.0
WAKAMIYA	9003	2.00	3.0	15.0	18.0	1.0	3.0	4.0	1.0	3.0	4.0
WALTERS	9001	2.00	3.0	2.0	5.0	1.0	2.0	3.0	1.0	2.0	3.0
YASUHARA	9003	2.00	6.0	-	6.0	2.0	4.0	6.0	1.0	2.0	3.0
TOTALS			119.0	697.0	816.0	39.0	378.0	417.0	34.0	112.0	146.0
AVERAGE PER FACULTY			6.6	24.0	25.5	2.2	12.2	13.0	1.9	3.6	4.6

1330 - Modern Languages - Faculty Courses & Hours

Fall 2003 - Spring 2004			All Types								
			SCH		TOTAL	Headcount		TOTAL	Sections		TOTAL
Faculty Member	Class	FTE	UGrad	Grad	SCH	UGrad	Grad	HC	UGrad	Grad	#Sec.
ADOLPH	9002	2.00	135.2	6.0	141.2	33.2	8.0	41.2	3.2	3.0	6.2
ADOLPH	9120	2.00	30.0	6.0	36.0	10.0	2.0	12.0	2.0	1.0	5.0
ARIAS	9002	2.00	129.0	126.0	255.0	43.0	30.0	73.0	4.0	6.0	11.0
BOUTIN	9003	2.00	129.0	75.0	204.0	43.0	19.0	62.0	4.0	5.0	18.0
CAPPUCCIO	9002	2.00	105.0	218.0	323.0	33.0	82.0	115.0	6.0	17.0	19.0
CLOONAN	9001	2.00	257.0	235.0	492.0	73.0	54.0	127.0	10.0	18.0	28.0
EFIMOV	9002	2.00	297.0	58.0	355.0	99.0	17.0	116.0	7.0	8.0	11.0
FERNANDEZ	9001	2.00	285.0	35.0	320.0	95.0	7.0	102.0	4.0	6.0	9.0
FLEMING	9001	2.00	212.0	25.0	237.0	62.0	9.0	71.0	5.0	6.0	12.0
GALEANO	9002	2.00	279.0	15.0	294.0	93.0	7.0	100.0	5.0	4.0	9.0
GERATO	9001	2.00	273.0	87.0	360.0	91.0	44.0	135.0	7.0	7.0	17.0
GOMARIZ	9003	2.00	117.0	116.0	233.0	39.0	28.0	67.0	2.0	10.0	11.0
GRAHAM-JONES	9002	2.00	162.0	96.0	258.0	54.0	23.0	77.0	3.0	11.0	14.0
HARGREAVES	9009	2.00	57.0	39.0	96.0	19.0	9.0	28.0	3.0	5.0	7.0
HILARY	9002	2.00	335.0	66.0	401.0	88.0	41.0	129.0	5.0	9.0	13.0
LAN	9003	2.00	381.0	9.0	390.0	111.0	6.0	117.0	8.0	4.0	10.0
LEBLANC	9001	2.00	477.0	2.0	479.0	130.0	2.0	132.0	7.0	2.0	11.0
LEPARULO	9001	1.00	24.0	29.0	53.0	3.2	14.0	17.2	1.2	3.0	4.2
LEUSHUIS	9003	1.00	123.0	15.0	138.0	41.0	4.0	45.0	2.0	3.0	4.0
MAIER-KATKIN	9003	1.00	69.0	15.0	84.0	23.0	5.0	28.0	2.0	2.0	4.0
MITCHELL	9003	2.00	62.0	30.0	92.0	16.2	33.0	49.2	4.2	4.0	9.2
PIETRALUNGA	9001	2.00	90.0	10.0	100.0	30.0	5.0	35.0	3.0	5.0	9.0
POEY	9003	1.00	249.0	83.0	332.0	83.0	23.0	106.0	5.0	9.0	13.0
REHDER	9002	2.00	291.0	67.0	358.0	97.0	56.0	153.0	3.0	9.0	14.0
ROMANCHUK	9003	2.00	135.0	24.0	159.0	45.0	5.0	50.0	8.0	5.0	9.0
RUPPERT	9001	2.00	174.0	87.0	261.0	58.0	38.0	96.0	6.0	10.0	16.0
RUQUIST	9003	2.00	200.0	6.0	206.0	58.0	2.0	60.0	3.0	1.0	11.0
SCHLENOFF	9121	2.00	364.0	60.0	424.0	98.0	20.0	118.0	12.0	8.0	7.0
SHARPE	9001	1.00	36.0	-	36.0	12.0	-	12.0	1.0	-	11.0
STANLEY	9001	2.00	87.0	57.0	144.0	29.0	34.0	63.0	3.0	5.0	5.0
STEPP-GREANY	9120	2.00	124.2	22.0	146.2	17.6	77.0	94.6	1.6	5.0	6.0
SULLIVAN	9121	2.00	540.0	-	540.0	180.0	-	180.0	8.0	-	4.6
SUNDERMAN	9003	2.00	237.0	84.0	321.0	79.0	22.0	101.0	5.0	5.0	11.0
WAKAMIYA	9003	2.00	265.0	15.0	280.0	78.0	3.0	81.0	5.0	3.0	11.0
WALTERS	9001	2.00	141.0	22.0	163.0	47.0	9.0	56.0	5.0	5.0	9.0
YASUHARA	9003	2.00	400.0	9.0	409.0	105.0	7.0	112.0	7.0	5.0	236.1
TOTALS			7,271.4	1,849.0	9,120.4	2,216.1	745.0	2,961.1	170.1	209.0	379.1
AVERAGE PER FACULTY			202.0	54.4	253.3	61.6	21.9	82.3	4.7	6.1	10.5

**Operating Budget E & G Position FTE and Rate Totals
By Pay Plan, Month Type, Filled/Vacant, and Rank**

ARTS AND SCIENCES

MODERN LANGUAGES

		2000-2001	2001-2002	2002-2003	2003-2004	2004-2005
Total All Pay Plans	FTE	52.50	56.00	53.78	52.64	53.96
	Personyear	37.8670	39.7824	38.3595	38.2415	38.7496
	CurrentRate	\$2,246,399	\$2,478,917	\$2,458,032	\$2,474,494	\$2,565,670
Filled 9 - & 12 month Faculty	FTE	38.00	37.00	39.00	38.00	40.00
	Personyear	29.1485	28.1485	29.8956	28.8956	30.3898
	Current Rate	\$1,882,958	\$2,003,166	\$2,111,722	\$2,139,147	\$2,209,244
Vacant & Reserve Faculty	FTE	3.50	5.50	3.00	4.00	3.00
	Personyear	2.2394	3.9864	1.8658	2.8658	1.8658
	Current Rate	\$152,843	\$215,362	\$100,270	\$104,244	\$137,772
Summer Faculty	FTE	5.00	6.50	5.78	4.64	4.96
	Personyear	0.4791	0.6475	0.5981	0.4801	0.4940
	Current Rate	\$31,069	\$44,725	\$43,765	\$36,431	\$34,906
Filled Support	FTE	6.00	7.00	6.00	6.00	6.00
	Personyear	6.0000	7.0000	6.0000	6.0000	6.0000
	Current Rate	\$179,529	\$215,664	\$202,275	\$194,672	\$183,748

**COLLEGE OF ARTS & SCIENCES
 MODERN LANGUAGES
 E&G BUDGET & EXPENDITURES BY BUDGET CATEGORY (2000-01-2004-05)**

BEGINNING OF YEAR E&G OPERATING BUDGET	2000-01	2001-02	2002-03	2003-04	2004-05
SALARY & BENEFITS	\$2,788,198	\$3,060,498	\$3,038,948	\$3,087,923	\$3,229,273
OPS	\$ 575,522	\$ 583,382	\$ 775,592	\$ 633,548	\$ 670,991
EXPENSE	\$ 60,857	\$ 68,410	\$ 56,990	\$ 73,150	\$ 73,150
OCO	\$ -	\$ -	\$ -	\$ -	\$ -
	\$ -	\$ -	\$ -	\$ -	\$ -
TOTAL	\$3,424,577	\$3,712,290	\$3,871,530	\$3,794,621	\$3,973,414
PERCENT INCREASE	-2.03%	8.40%	4.29%	-1.99%	4.71%
PERCENT OF UNIVERSITY E&G OPERATING BUDG	0.97%	1.06%	1.05%	0.99%	0.94%
END OF YEAR EXPENDITURES & ENCUMBRANCES	2000-01	2001-02	2002-03	2003-04	2004-05
EDUCATION & GENERAL					
SALARY					
OPS					
EXPENSE					
OCO					
TOTAL	\$ -	\$ -	\$ -	\$ -	\$ -

SOURCE: OPERATING BUDGETS

- 2000-01
- 2001-02
- 2002-03
- 2003-04
- 2004-05

**COLLEGE OF ARTS & SCIENCES
MODERN LANGUAGES
C&G & OTHER FUND EXPENDITURES BY BUDGET CATEGORY (1999-00-2003-04)**

	1999-00	2000-01	2001-02	2002-03	2003-04
CONTRACTS & GRANTS					
SALARY	\$ 19,403	\$ 27,600	\$ 34,251	\$ 68,125	\$ 45,122
OPS	\$ 9,350	\$ -	\$ 11,416	\$ 15,255	\$ -
EXPENSE	\$ 275	\$ 304	\$ 19,069	\$ 20,021	\$ -
OCO	\$ -	\$ -	\$ 8,432	\$ -	\$ -
TOTAL	\$ 29,028	\$ 27,904	\$ 73,168	\$ 103,401	\$ 45,122
AUXILIARY ENTERPRISES					
SALARY	\$ -	\$ -	\$ -	\$ -	\$ -
OPS	\$ -	\$ -	\$ -	\$ -	\$ -
EXPENSE	\$ -	\$ -	\$ -	\$ -	\$ -
OCO	\$ -	\$ -	\$ -	\$ -	\$ -
TOTAL	\$ -	\$ -	\$ -	\$ -	\$ -
CONCESSION FUNDS					
SALARY	\$ -	\$ -	\$ -	\$ -	\$ -
OPS	\$ -	\$ -	\$ -	\$ -	\$ -
EXPENSE	\$ -	\$ -	\$ -	\$ -	\$ -
OCO	\$ -	\$ -	\$ -	\$ -	\$ -
TOTAL	\$ -	\$ -	\$ -	\$ -	\$ -
ALL FUNDS					
SALARY	\$ 19,403	\$ 27,600	\$ 34,251	\$ 68,125	\$ 45,122
OPS	\$ 9,350	\$ -	\$ 11,416	\$ 15,255	\$ -
EXPENSE	\$ 275	\$ 304	\$ 19,069	\$ 20,021	\$ -
OCO	\$ -	\$ -	\$ 8,432	\$ -	\$ -
TOTAL	\$ 29,028	\$ 27,904	\$ 73,168	\$ 103,401	\$ 45,122

SOURCE: OPERATING BUDGETS
2000-01
2001-02
2002-03
2003-04
2004-05

E & G Expenditures by Budget Category, By Major Object Code

ARTS AND SCIENCES

MODERN LANGUAGES

		1999-2000	2000-2001	2001-2002	2002-2003	2003-2004
SALARY	A&P	\$63,019	\$81,990	\$95,975	\$85,985	\$92,970
	FACULTY	\$1,901,781	\$2,023,312	\$2,113,772	\$2,171,417	\$2,199,342
	FRINGE BENEFITS	\$522,927	\$542,190	\$562,973	\$544,566	\$599,066
	OTHER SALARY	\$0	\$0	\$8,472	\$27,519	\$44,296
	USPS	\$132,360	\$106,212	\$100,221	\$102,065	\$102,396
	sub-total:	\$2,620,087	\$2,753,704	\$2,881,413	\$2,931,552	\$3,038,070
EXPENSE	CONSULTING & OTHER	\$800	\$800	\$800	\$5,439	\$1,278
	EDUCATIONAL SUPPLIES	\$2,333	\$1,964	\$1,377	\$496	\$2,589
	EQUIPMENT & BOOKS	\$1,514	\$929			
	EXPENSE OTHER	\$926	\$1,440	\$2,361	\$1,303	\$1,094
	FREIGHT	\$1,296	\$126	\$270	\$77	\$787
	MAINT & HEATING SUPPLIES	\$102	\$229	\$230	\$102	\$1,192
	MOVING EXPENSES	\$0	\$0			
	OFFICE SUPPLIES	\$6,338	\$7,977	\$5,976	\$7,210	\$12,218
	OTHER CURRENT CHARGES	\$989	\$668	\$575	\$3,874	\$525
	OTHER MATERIALS & SUPPLIES	\$12,901	\$10,271	\$5,944	\$7,892	\$17,891
	POSTAGE	\$1,305	\$1,604	\$1,493	\$1,904	\$1,865
	PRINTING	\$536	\$1,478	\$807	\$1,438	\$543
	PURCHASE FOR RESALE	\$740	\$0			
	RENTAL OF BUILDINGS	\$0	\$0			
	RENTAL OF EQUIPMENT	\$70	\$175	\$70		
	REPAIRS & MAINTENANCE	\$8,866	\$7,758	\$9,081	\$7,894	\$7,873
	SCHOLARSHIPS & FELLOWSHIP	\$6,300	\$0			
	TELEPHONE	\$23,506	\$21,154	\$19,151	\$21,370	\$21,384
	TRAVEL	\$39,198	\$44,984	\$11,445	\$29,231	\$21,112
	sub-total:	\$107,720	\$101,557	\$59,580	\$88,230	\$90,351
OCO	BOOKS	\$0	\$0			
	DATA PROCESSING EQUIPMENT	\$39,070	\$21,987	\$3,029	\$1,577	\$16,529
	EDUCATIONAL EQUIPMENT	\$0	\$0			
	FURNITURE & EQUIPMENT	\$5,181	\$0			
	OCO OTHER	\$0	\$0			
sub-total:	\$44,251	\$21,987	\$3,029	\$1,577	\$16,529	
OPS	CONSULTING & OTHER PERSON	\$2,200	\$500			
	FACULTY ADJUNCTS	\$76,685	\$128,884	\$153,267	\$120,428	\$84,922
	FRINGE BENEFITS	\$5,023	\$14,099	\$14,285	\$12,953	\$8,510
	GRAD ASST	\$691,553	\$697,615	\$782,910	\$870,328	\$952,241
	OPS OTHER	\$15,084	\$19,090	\$21,432	\$37,659	\$21,737
	STUDENT ASST	\$63,201	\$56,614	\$45,562	\$41,930	\$46,771
sub-total:	\$853,746	\$916,802	\$1,017,456	\$1,083,298	\$1,114,181	
Dept Total :		\$3,625,804	\$3,794,050	\$3,961,478	\$4,104,657	\$4,259,131