

Demography Program Data Booklet

Fall Term 2006
Quality Enhancement
Review

prepared by the Office of Institutional Research
Budget & Analysis Department



**COLLEGE OF SOCIAL SCIENCES
DEMOGRAPHY
DEGREE PROGRAMS**

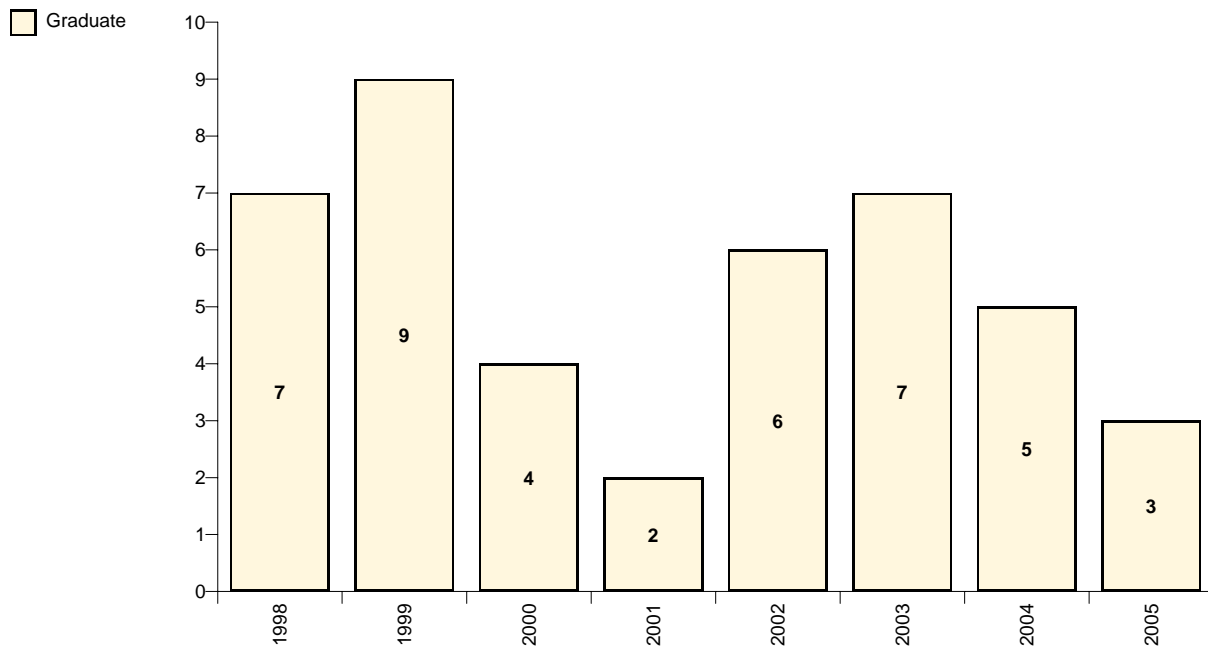
Major Name	Major Code	CIP Code	Degree Offered
Demography	328910	450501	Masters

Source: Degree Program Inventory, FSU and SUS

**COLLEGE OF SOCIAL SCIENCES
DEMOGRAPHY
ENROLLMENT BY FALL SEMESTER**

Demography

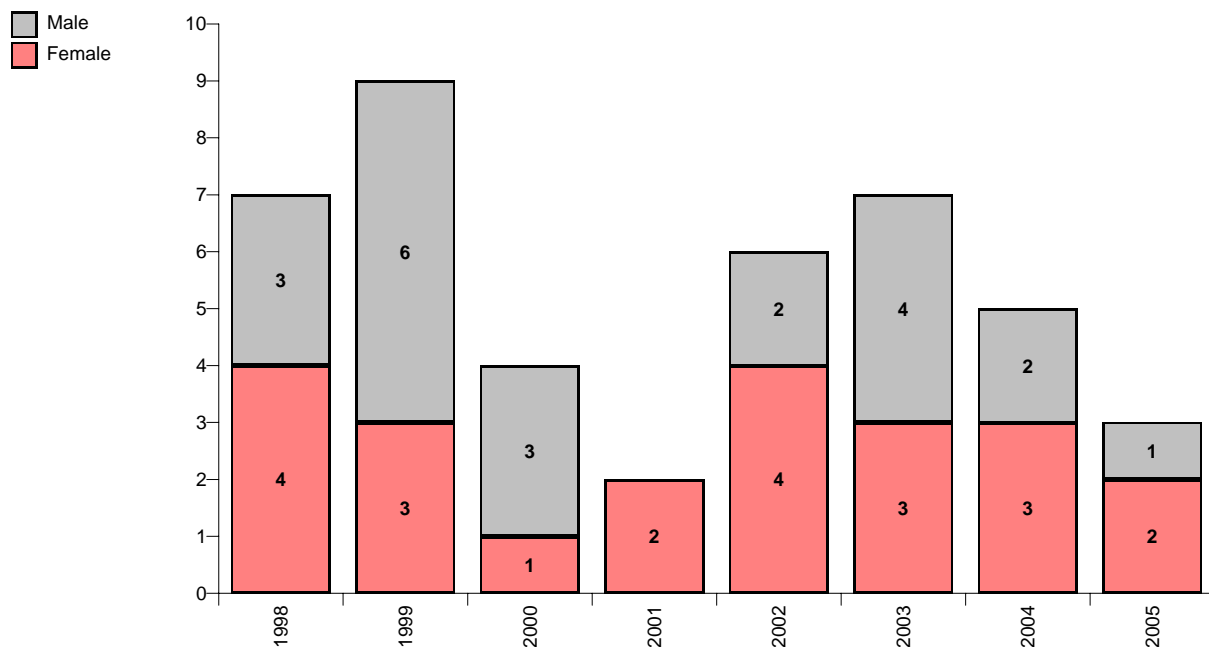
328910



	1998	1999	2000	2001	2002	2003	2004	2005
Graduate - Masters	7	9	4	2	6	7	5	3
Total	7	9	4	2	6	7	5	3

Source: Fall Preliminary Student Data Course Files

**COLLEGE OF SOCIAL SCIENCES
DEMOGRAPHY
ENROLLMENT BY FALL SEMESTER**

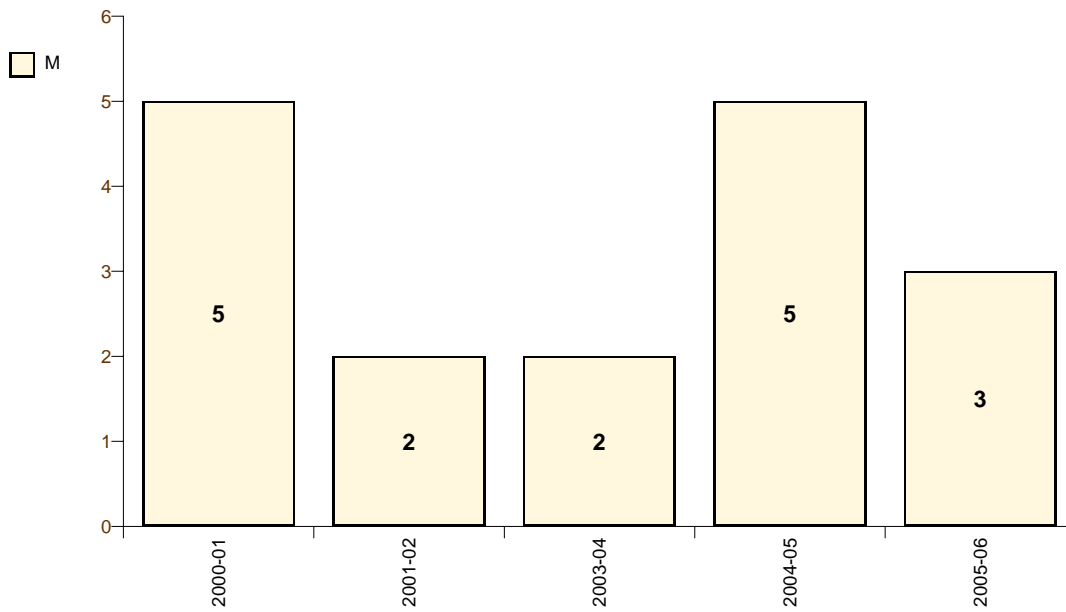


		1998	1999	2000	2001	2002	2003	2004	2005
Female	Black						1	2	
	Non-Resident Alien				1	1			
	White	4	3	1	1	3	2	1	2
Female	Total	4	3	1	2	4	3	3	2
Male	Asian or Pacific Islander						1		
	Non-Resident Alien	1	3	1					
	White	2	3	2		2	2	1	1
	Not Reported						1	1	
Male	Total	3	6	3		2	4	2	1
	Department Total	7	9	4	2	6	7	5	3

Source: Fall Preliminary Student Data Course Files

**COLLEGE OF SOCIAL SCIENCES
DEMOGRAPHY
DEGREES AWARDED BY SEMESTER**

CIP Code: 450501



		Masters	Total
2000-01	<i>Summer '00</i>	3	3
	<i>Fall '00</i>	2	2
2000-01	Total	5	5
2001-02	<i>Summer '01</i>	1	1
	<i>Fall '01</i>	1	1
2001-02	Total	2	2
2003-04	<i>Summer '03</i>	1	1
	<i>Fall '03</i>	1	1
2003-04	Total	2	2
2004-05	<i>Summer '04</i>	1	1
	<i>Fall '04</i>	4	4
2004-05	Total	5	5
2005-06	<i>Summer '05</i>	3	3
2005-06	Total	3	3

Source: Final Student Data Course Files (SDCF)