

Classics Data Booklet

Spring Term 2012
Quality Enhancement
Review

Prepared by the Office of Institutional Research



Classics
SPRING TERM 2012

Most recent available statistics

		Report Page No(s)
Degrees Offered	13	1
Faculty	14	2
Majors (Fall 2011 Headcount)		
Undergraduate	83	3
Graduate - Masters	20	3
Graduate - Specialist	-	3
Graduate - Doctorate	24	3
Total	127	3
2010-2011 Degrees Awarded		
Bachelors	23	12-14
Masters	16	12-14
Specialist	-	12-14
Doctorate	-	12-14
Total	39	12-14
Average Class Size (Fall 2010)		
Undergraduate		
Lower - classroom	81.2	16
Upper - classroom	42.8	16
Graduate - classroom	8.4	16
Credit Hours - Annual (2010-2011)		
Fundable	15,750	17
Non-fundable	229	18
Total	15,979	19
University (fundable)	1,074,302	SIF*
2010-2011 Department Fundable Hours As Percent of University Fundable Hours	1.5%	calculated
Student FTE's- Annual (state fundable 2010-2011)		
Lower	87.7	17
Upper	280.3	17
Grad I	16.0	17
Grad II	16.2	17
Total	400.2	17
Credit Hours Percentages by Instructor Type (Fall 2010)		20
Faculty	40.8%	calculated
OPS Regular Faculty	0.0%	calculated
OPS Faculty Adjuncts	2.4%	calculated
Graduate Assistants	56.9%	calculated
A&P/USPS	0.0%	calculated
Phased Retirement	0.0%	calculated
Others	0.0%	calculated
Average Total Credit Hours Taught per Faculty FTE (All Hours, 2010-2011)		
Fall Term	373.2	20
Spring Term	268.8	20
Academic Year	642.0	calculated
Annual Student FTE's Taught by all Faculty (Fall & Spring total hrs converted to annual FTE's, 2010-2011)		24
Undergraduate (academic year hours/40)	184.1	calculated
Graduate (academic year hours/32)	25.5	calculated
Total	209.6	calculated

*Note: most statistics are based on the Classics Department account 076xxx. Related accounts may not be included in expenditures and in faculty courses and hours taught. *SIF=Student Information File*

Classics
Spring Term 2012

Table of Contents

	<u>Page</u>
Degree Programs	1
The Faculty.....	2
Enrollment by major	3
Degrees Awarded.....	12
Average Class Size	16
Credit Hours by Semester/Fall & Spring/Annual	
Fundable	17
Non-fundable.....	18
Total	19
Credit Hours and Courses by Instructor Type.....	
E&G Detail 2006-07 to 2010-11	20
Faculty Courses and Hours 2005-06 and 2009-10 (Individual Faculty Summary)	
2006-07	22
2010-11	24
E&G Budgeted Faculty and Staff Lines.....	25
E&G Expenditures by Summary Object Code	26
Graduate Student Completion	27
Unit Accomplishment Summary Pages 1 and 2.....	28

**COLLEGE OF ARTS & SCIENCES
CLASSICS
DEGREE PROGRAMS**

Major Name	Major Code	CIP Code	Degree Offered
Classics	111910	161200	Doctorate
Major Name	Major Code	CIP Code	Degree Offered
Classical Civilization	111911	161200	Bachelors
Classical Civilization	111911	161200	Masters
Major Name	Major Code	CIP Code	Degree Offered
Classics & Religion	111912	161200	Bachelors
Major Name	Major Code	CIP Code	Degree Offered
Classical Archaeology	111913	161200	Bachelors
Classical Archaeology	111913	161200	Masters
Major Name	Major Code	CIP Code	Degree Offered
Greek & Latin	111915	161200	Bachelors
Greek & Latin	111915	161200	Masters
Major Name	Major Code	CIP Code	Degree Offered
Ancient History	111919	161200	Masters
Major Name	Major Code	CIP Code	Degree Offered
Greek	111920	161202	Bachelors
Greek	111920	161202	Masters
Major Name	Major Code	CIP Code	Degree Offered
Latin	111930	161203	Bachelors
Latin	111930	161203	Masters

Source: Degree Program Inventory, FSU and SUS

**College of Arts and Sciences
Department of Classics
Faculty Demographics**

Last Name	First Name	Degree	Degree University	Admin. Code	Class & Title	Mo.	Tenure	FSU Hire	Gender	Race
Branscome	David	PhD	Indiana University	99	9021 - Assistant In	9	3	2007-08-09	Male	White
Cairns	Francis	PhD	University of Liverpool	99	9001 - Professor	9	1	2000-10-02	Male	Non-Resident Alien
De Grummond	Nancy	PhD	University of North Carolina	99	9001 - Professor	9	1	1977-09-09	Female	White
Fulkerson	Laurel	PhD	Columbia University	99	9002 - Associate Professor	9	1	2000-08-08	Female	White
Luke	Trevor	PhD	Pennsylvania University	99	9003 - Assistant Professor	9	2	2006-08-09	Male	White
Marincola	John	PhD	Brown University	C1	9001 - Professor	9	1	2003-08-08	Male	White
Pfaff	Christopher	PhD	Inst. of Fine Arts, New York Univ.	99	9002 - Associate Professor	9	1	1995-08-08	Male	White
Pullen	Daniel	PhD	Indiana University	99	9001 - Professor	9	1	1988-08-08	Male	White
Richey	Elizabeth	PhD	Indiana University						Female	White
Romano	Allen	PhD	Stanford University	99	9003 - Assistant Professor	9	2	2007-08-09	Male	White
Sickinger	James	PhD	Brown University	99	9002 - Associate Professor	9	1	1993-08-09	Male	White
Slaveva-Griffin	Svetoslava	PhD	University of Iowa	99	9002 - Associate Professor	9	1	2001-08-08	Female	White
Stover	Timothy	PhD	University of Texas	99	9003 - Assistant Professor	9	2	2006-08-09	Male	White
Van Dusen	Rachel	PhD	University of Buffalo						Female	White

Administrative Codes:

C1 - Chair
99 - No Administrative Duties

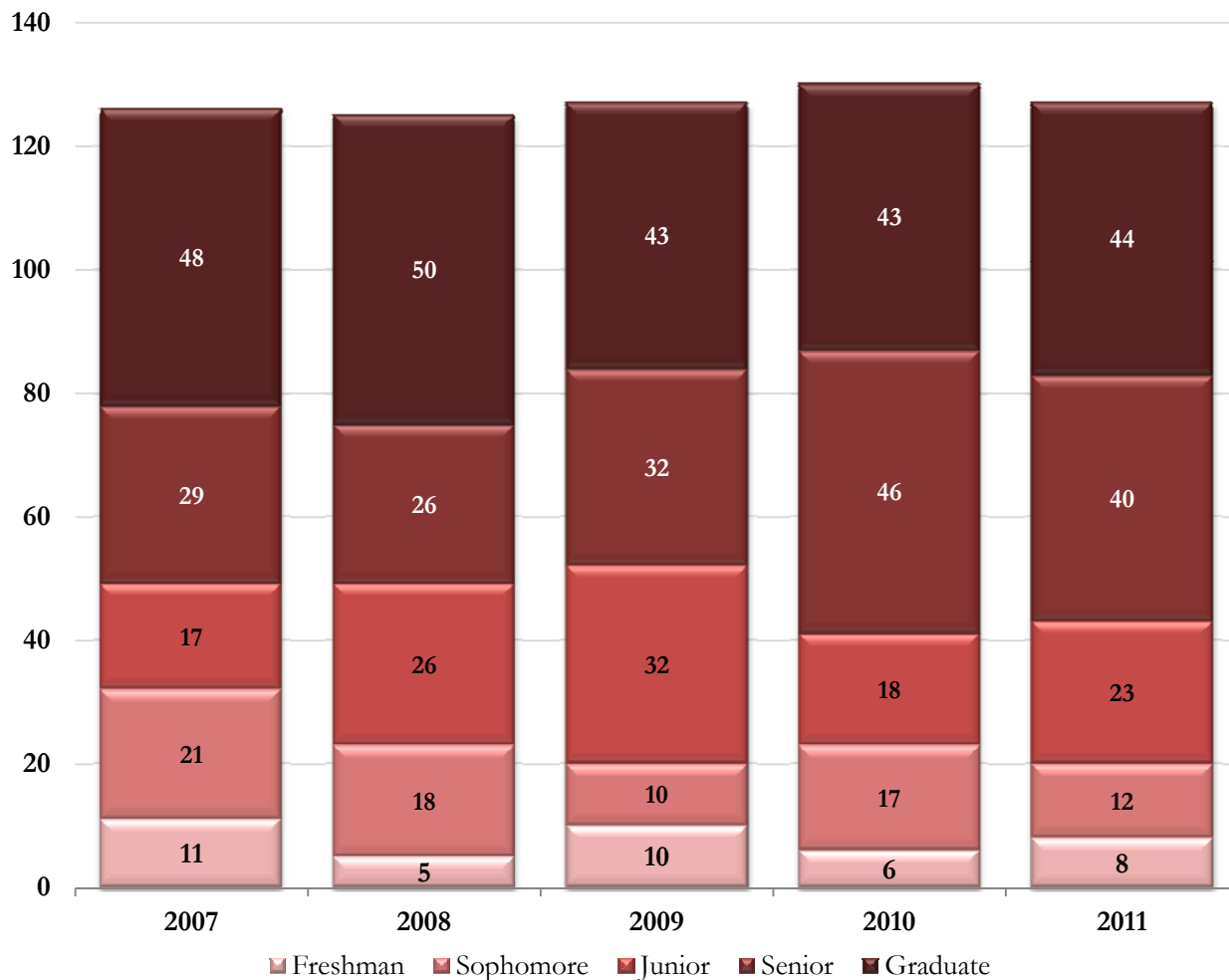
Tenure Codes:

1 - Tenured
2 - Tenure-Earning
3 - Non-Tenured

Last Updated on October 26, 2011

Enrollment by Fall Semester
 College of Arts and Sciences
 Department of Classics

Major Code: 1119XX
 Major Description: Department Total

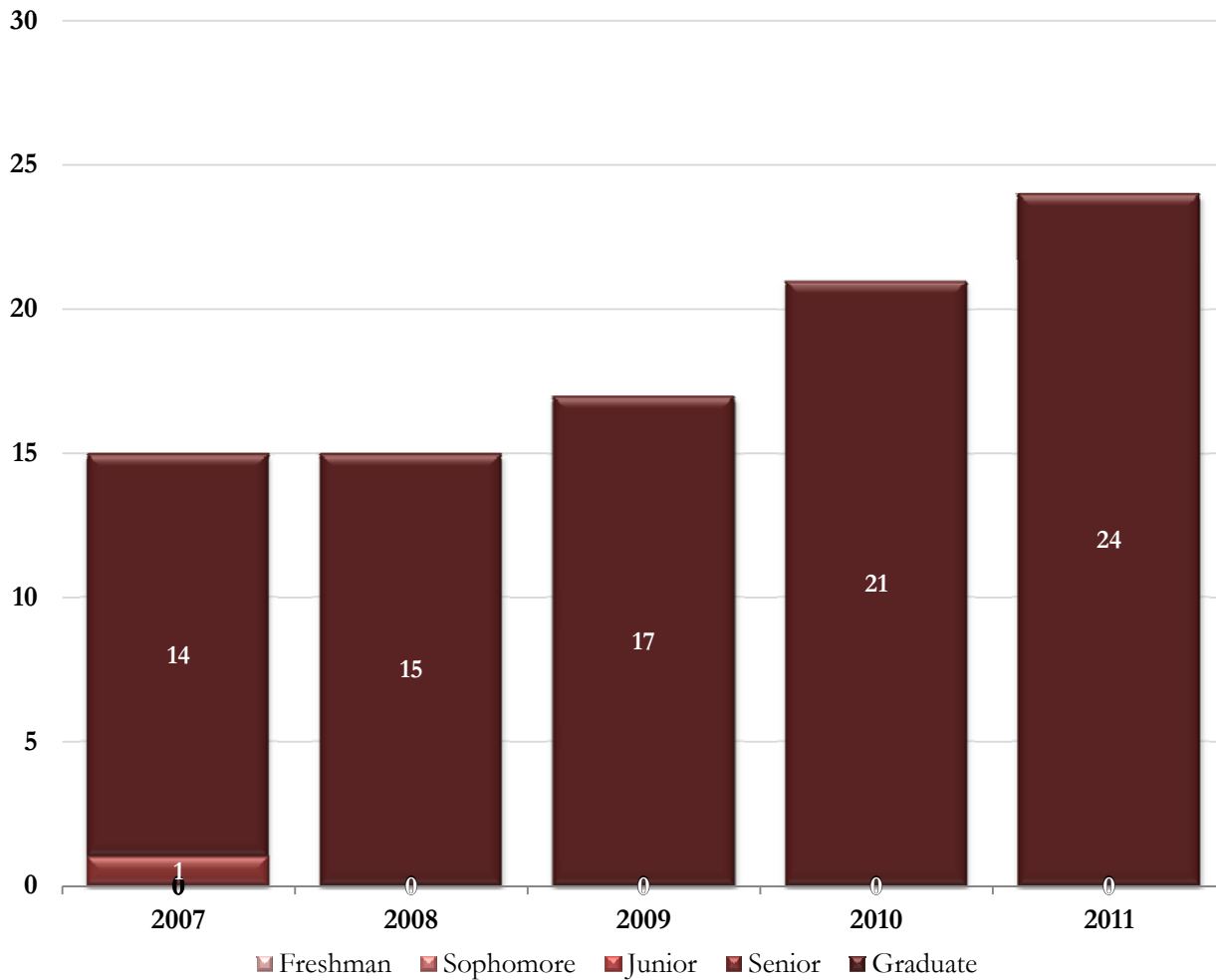


Major Code: 1119XX	Fall 2007	Fall 2008	Fall 2009	Fall 2010	Fall 2011
Undergraduate	78	75	84	87	83
Freshman	11	5	10	6	8
Sophomore	21	18	10	17	12
Junior	17	26	32	18	23
Senior	29	26	32	46	40
Graduate	48	50	43	43	44
Graduate - Masters	35	35	26	22	20
Graduate - Doctorate	13	15	17	21	24
Total for 1119XX	126	125	127	130	127

Source: Fall Preliminary Student Instruction Files (SIFP)

Enrollment by Fall Semester
 College of Arts and Sciences
 Department of Classics

Major Code: 111910
 Major Description: Classics

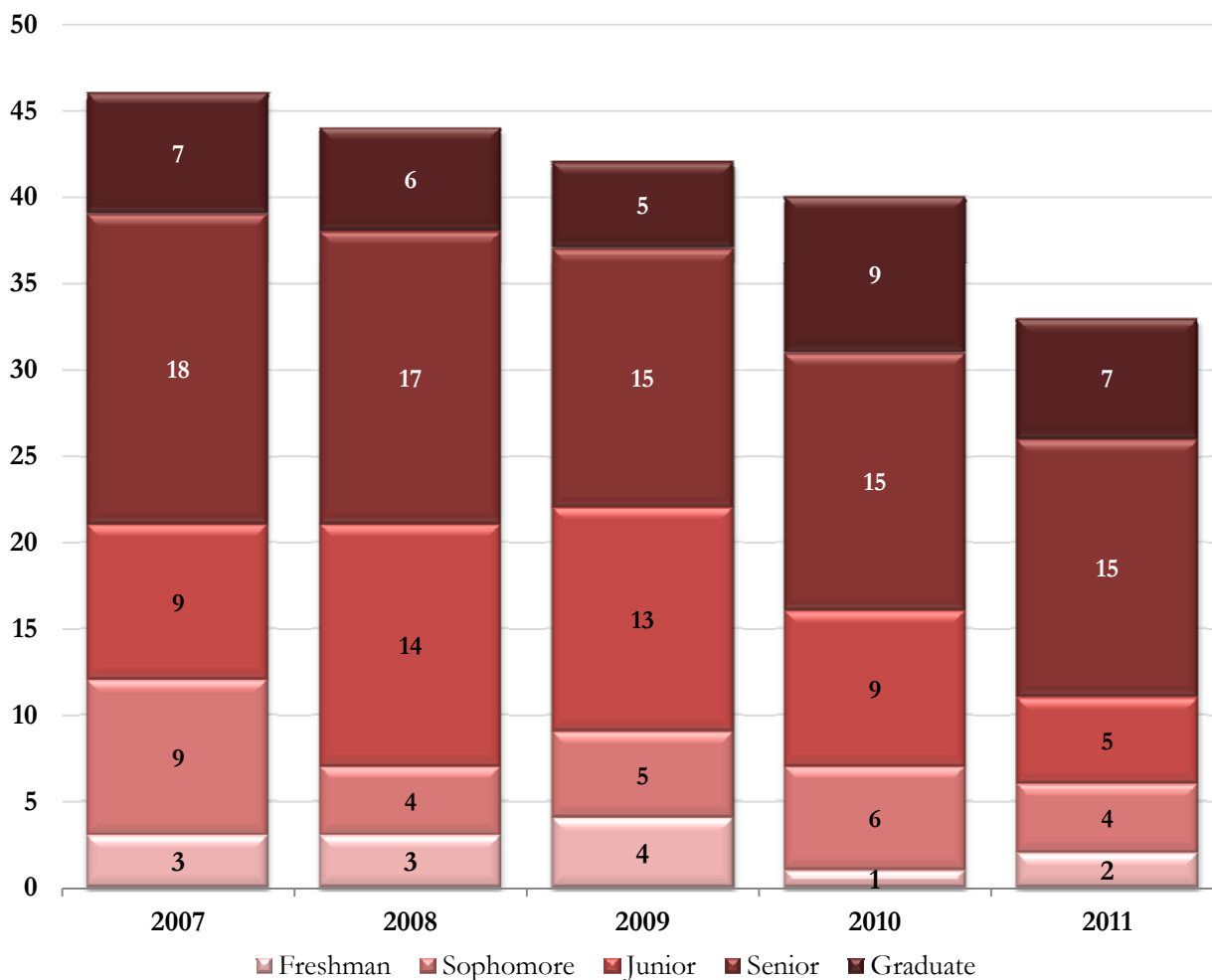


Major Code: 111910	Fall 2007	Fall 2008	Fall 2009	Fall 2010	Fall 2011
Undergraduate	1	0	0	0	0
Freshman	0	0	0	0	0
Sophomore	0	0	0	0	0
Junior	0	0	0	0	0
Senior	1	0	0	0	0
Graduate	14	15	17	21	24
Graduate - Masters	1	0	0	0	0
Graduate - Doctorate	13	15	17	21	24
Total for 111910	15	15	17	21	24

Source: Fall Preliminary Student Instruction Files (SIFP)

Enrollment by Fall Semester
 College of Arts and Sciences
 Department of Classics

Major Code: 111911
 Major Description: Classical Civilizations

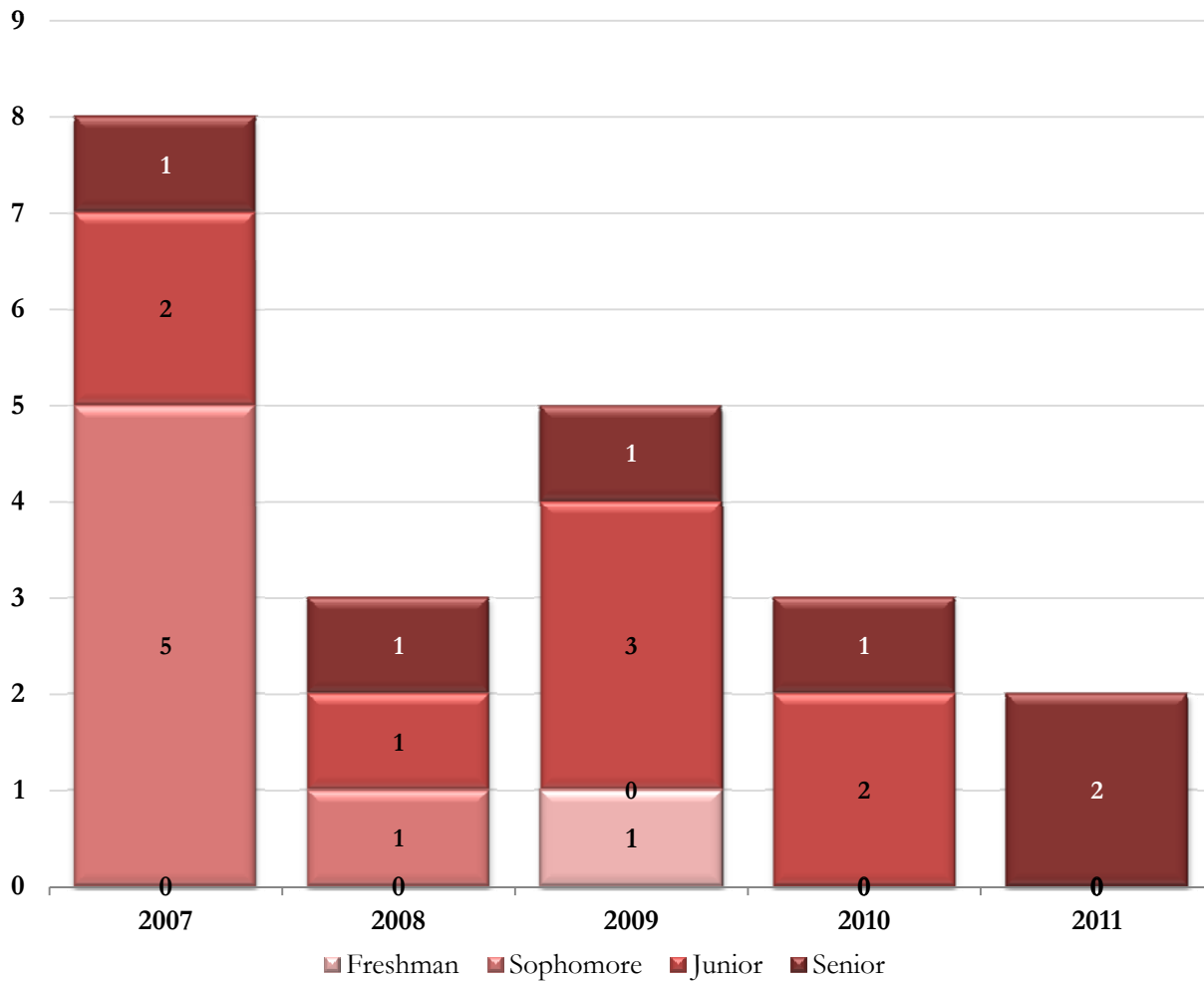


Major Code: 111911	Fall 2007	Fall 2008	Fall 2009	Fall 2010	Fall 2011
Undergraduate	39	38	37	31	26
Freshman	3	3	4	1	2
Sophomore	9	4	5	6	4
Junior	9	14	13	9	5
Senior	18	17	15	15	15
Graduate	7	6	5	9	7
Graduate - Masters	7	6	5	9	7
Graduate - Doctorate	0	0	0	0	0
Total for 111911	46	44	42	40	33

Source: Fall Preliminary Student Instruction Files (SIFP)

Enrollment by Fall Semester
 College of Arts and Sciences
 Department of Classics

Major Code: 111912
 Major Description: Classics & Religion

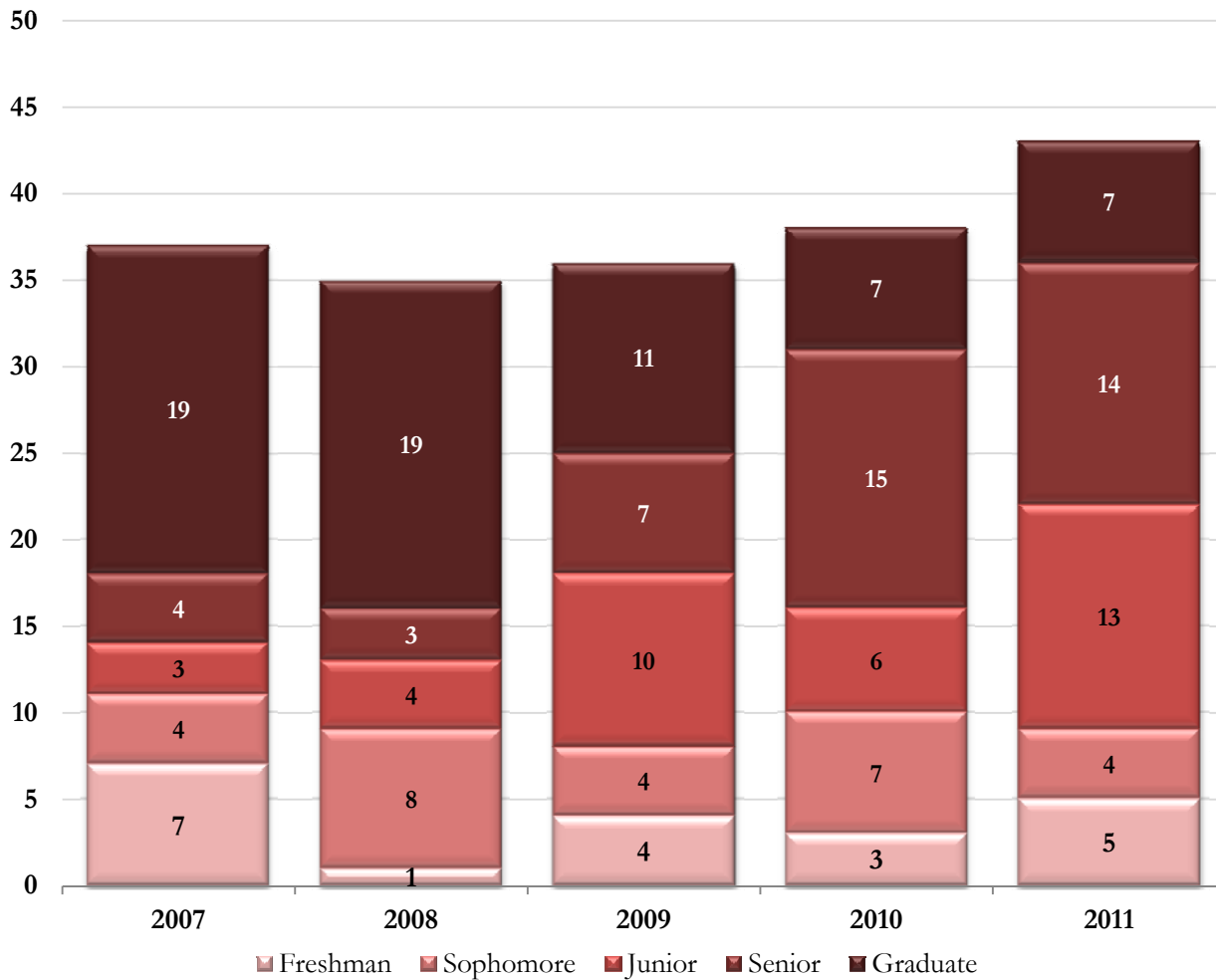


Major Code: 111912	Fall 2007	Fall 2008	Fall 2009	Fall 2010	Fall 2011
Undergraduate	8	3	5	3	2
Freshman	0	0	1	0	0
Sophomore	5	1	0	0	0
Junior	2	1	3	2	0
Senior	1	1	1	1	2
Graduate	0	0	0	0	0
Graduate - Masters	0	0	0	0	0
Graduate - Doctorate	0	0	0	0	0
Total for 111912	8	3	5	3	2

Source: Fall Preliminary Student Instruction Files (SIFP)

Enrollment by Fall Semester
 College of Arts and Sciences
 Department of Classics

Major Code: 111913
 Major Description: Classical Archaeology

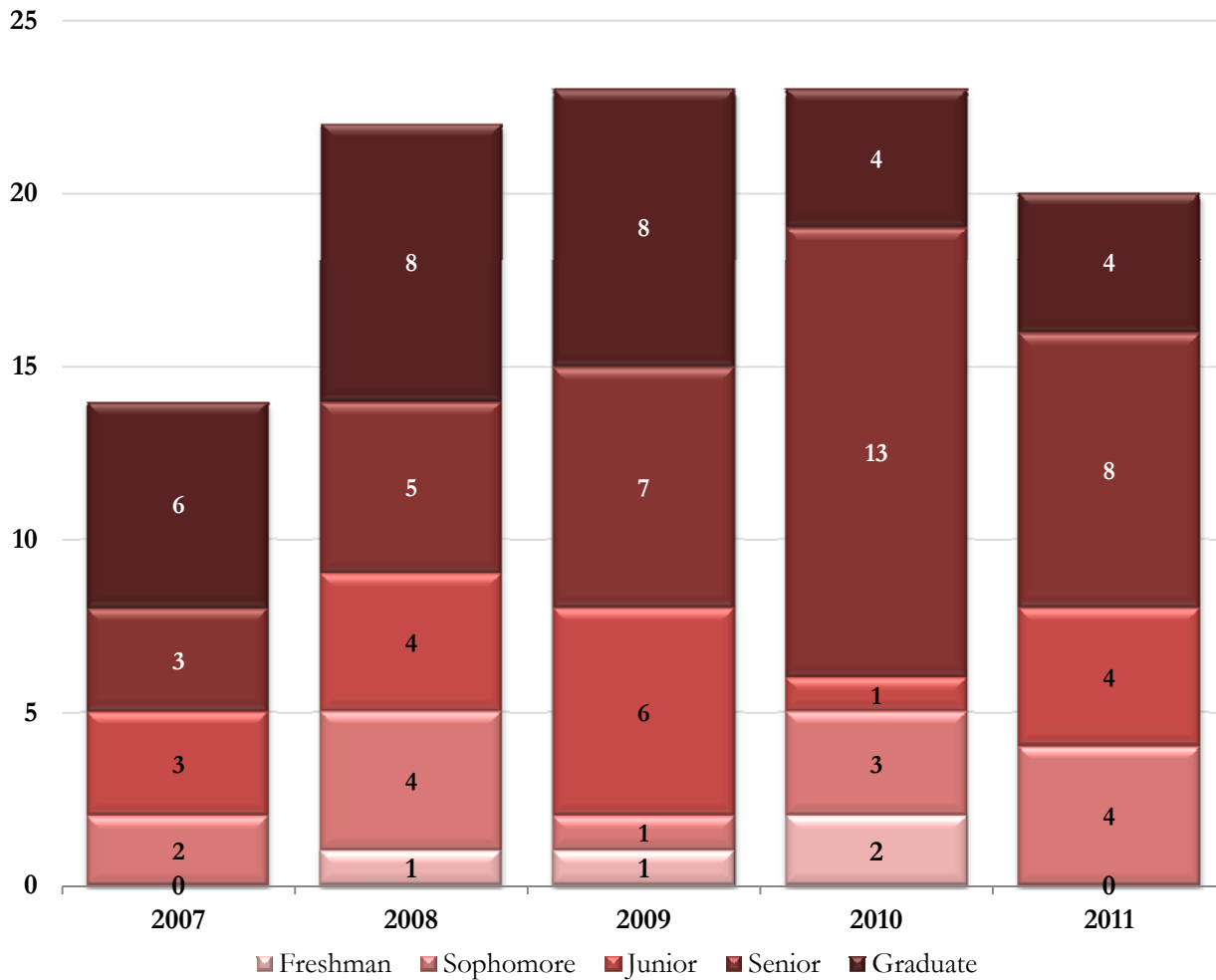


Major Code: 111913	Fall 2007	Fall 2008	Fall 2009	Fall 2010	Fall 2011
Undergraduate	18	16	25	31	36
Freshman	7	1	4	3	5
Sophomore	4	8	4	7	4
Junior	3	4	10	6	13
Senior	4	3	7	15	14
Graduate	19	19	11	7	7
Graduate - Masters	19	19	11	7	7
Graduate - Doctorate	0	0	0	0	0
Total for 111913	37	35	36	38	43

Source: Fall Preliminary Student Instruction Files (SIFP)

Enrollment by Fall Semester
 College of Arts and Sciences
 Department of Classics

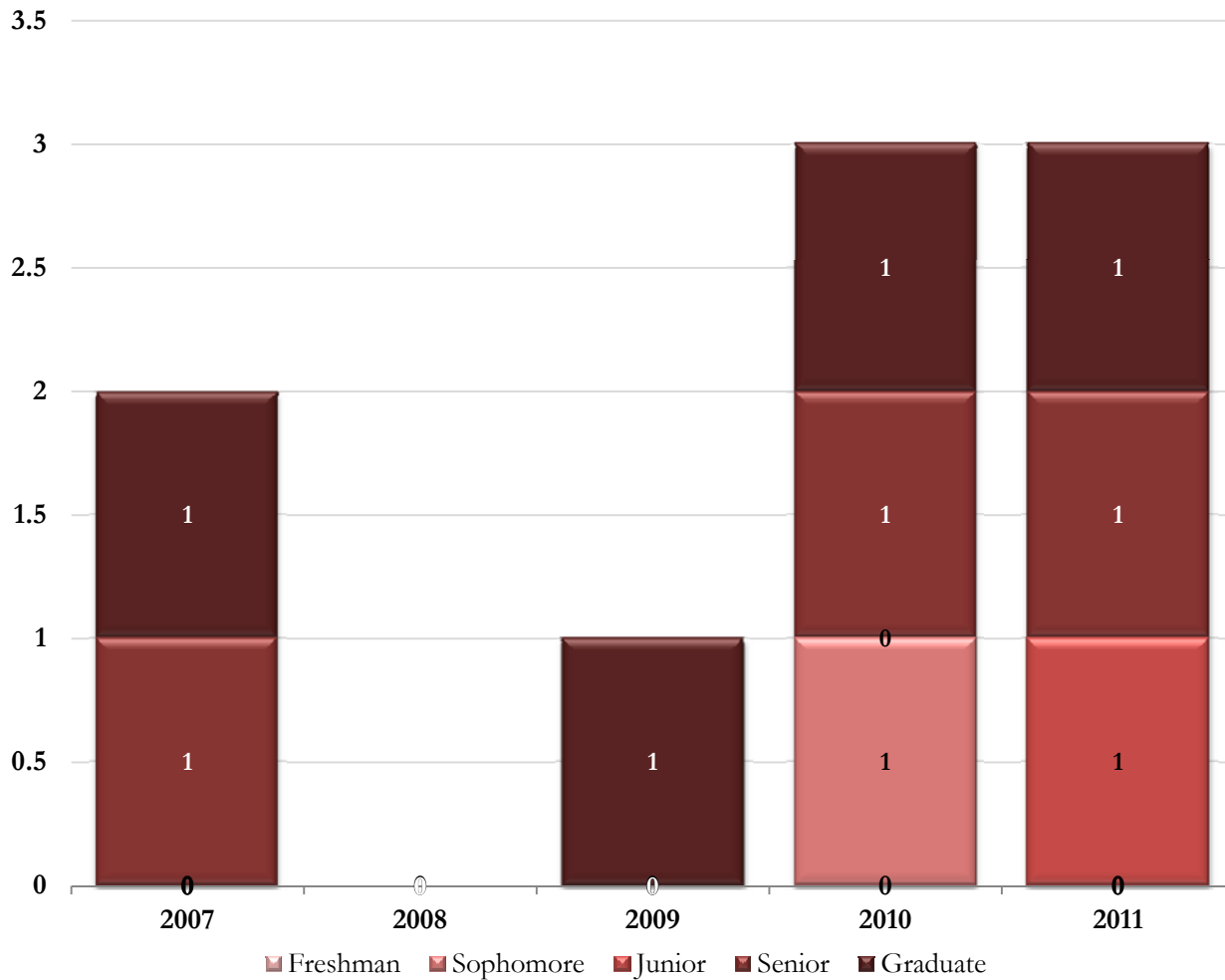
Major Code: 111915
 Major Description: Greek & Latin



Major Code: 111915	Fall 2007	Fall 2008	Fall 2009	Fall 2010	Fall 2011
Undergraduate	8	14	15	19	16
Freshman	0	1	1	2	0
Sophomore	2	4	1	3	4
Junior	3	4	6	1	4
Senior	3	5	7	13	8
Graduate	6	8	8	4	4
Graduate - Masters	6	8	8	4	4
Graduate - Doctorate	0	0	0	0	0
Total for 111915	14	22	23	23	20

Source: Fall Preliminary Student Instruction Files (SIFP)

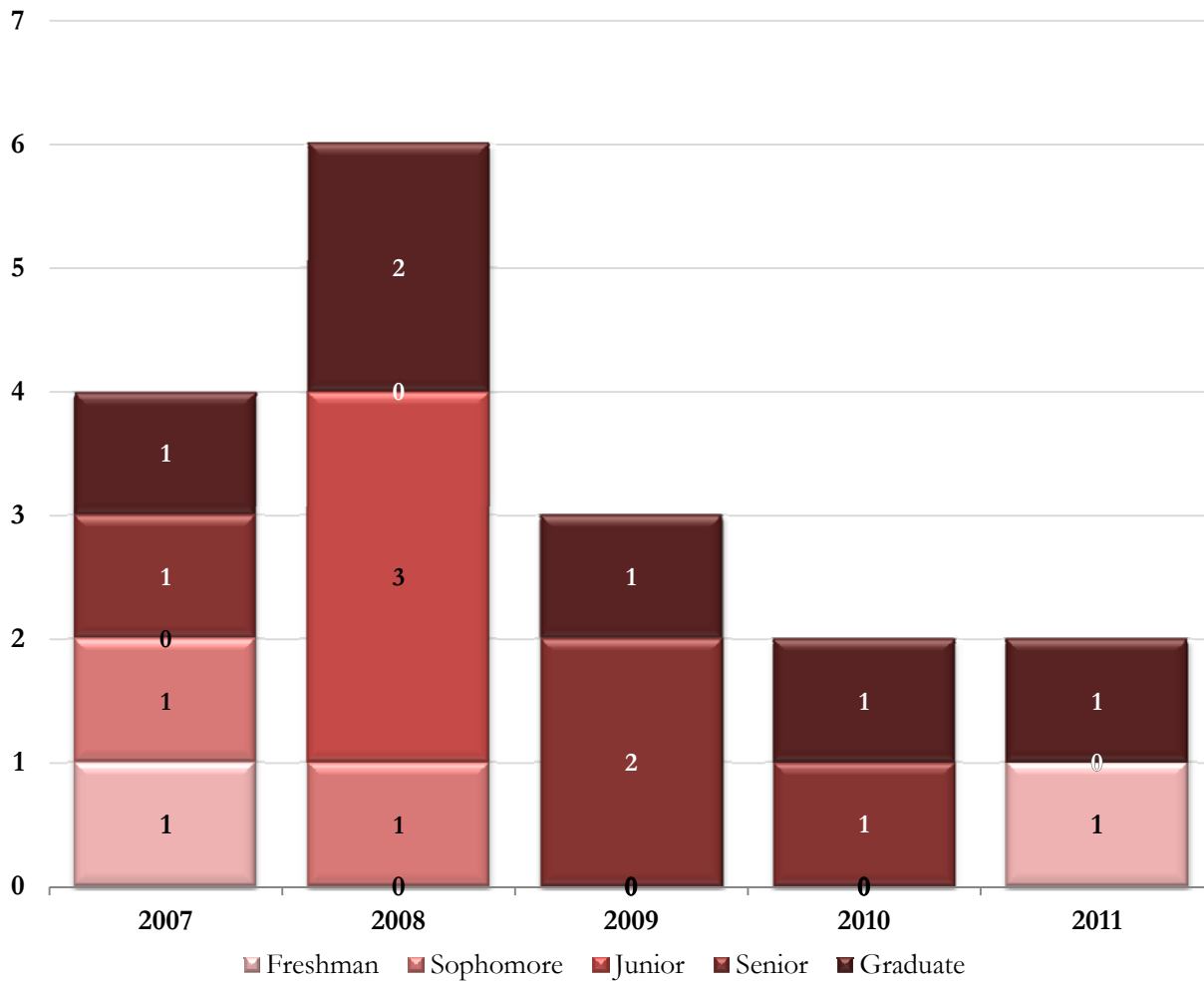
Enrollment by Fall Semester
College of Arts and Sciences
Department of Classics
Major Code: 111920
Major Description: Greek



Major Code: 111920	Fall 2007	Fall 2008	Fall 2009	Fall 2010	Fall 2011
Undergraduate	1	0	0	2	2
Freshman	0	0	0	0	0
Sophomore	0	0	0	1	0
Junior	0	0	0	0	1
Senior	1	0	0	1	1
Graduate	1	0	1	1	1
Graduate - Masters	1	0	1	1	1
Graduate - Doctorate	0	0	0	0	0
Total for 111920	2	0	1	3	3

Source: Fall Preliminary Student Instruction Files (SIFP)

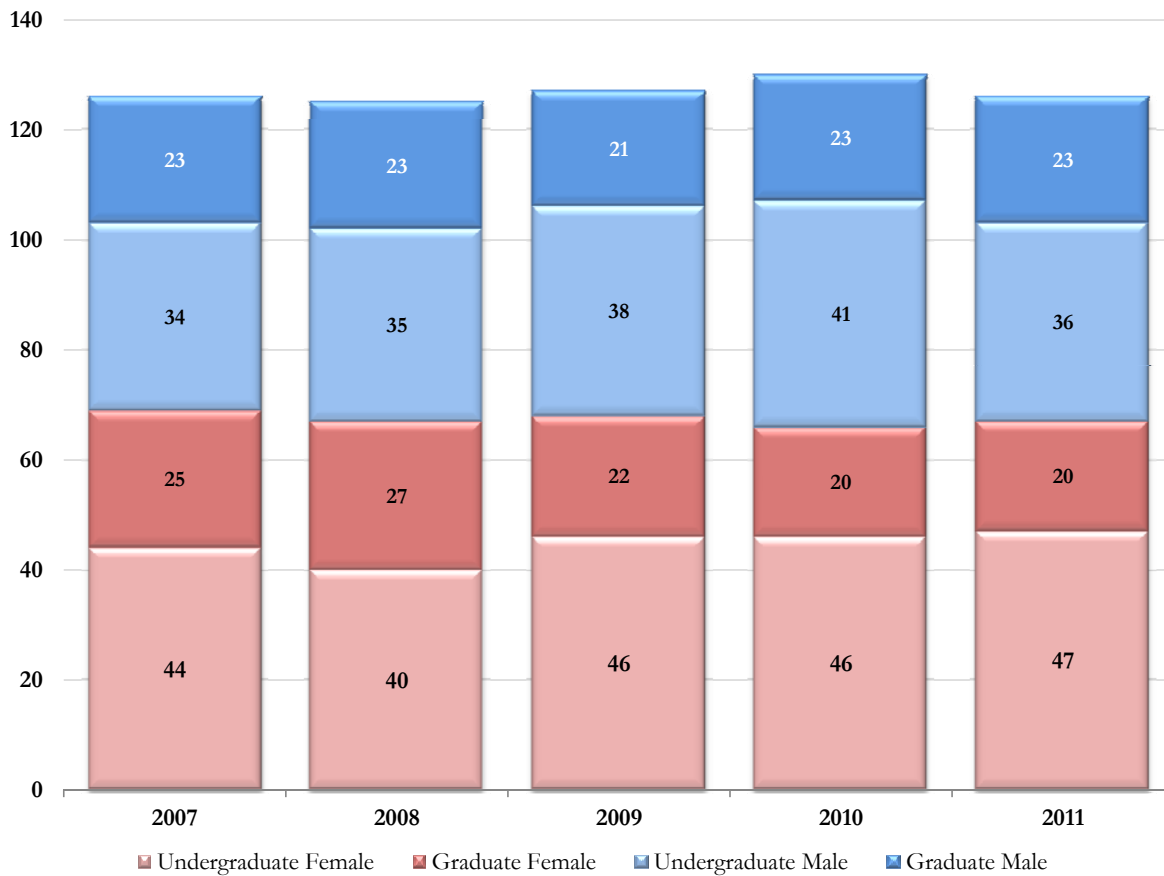
Enrollment by Fall Semester
 College of Arts and Sciences
 Department of Classics
 Major Code: 111930
 Major Description: Latin



Major Code: 111930	Fall 2007	Fall 2008	Fall 2009	Fall 2010	Fall 2011
Undergraduate	3	4	2	1	1
Freshman	1	0	0	0	1
Sophomore	1	1	0	0	0
Junior	0	3	0	0	0
Senior	1	0	2	1	0
Graduate	1	2	1	1	1
Graduate - Masters	1	2	1	1	1
Graduate - Doctorate	0	0	0	0	0
Total for 111930	4	6	3	2	2

Source: Fall Preliminary Student Instruction Files (SIFP)

Enrollment by Fall Semester
 College of Arts and Sciences
 Department of Classics

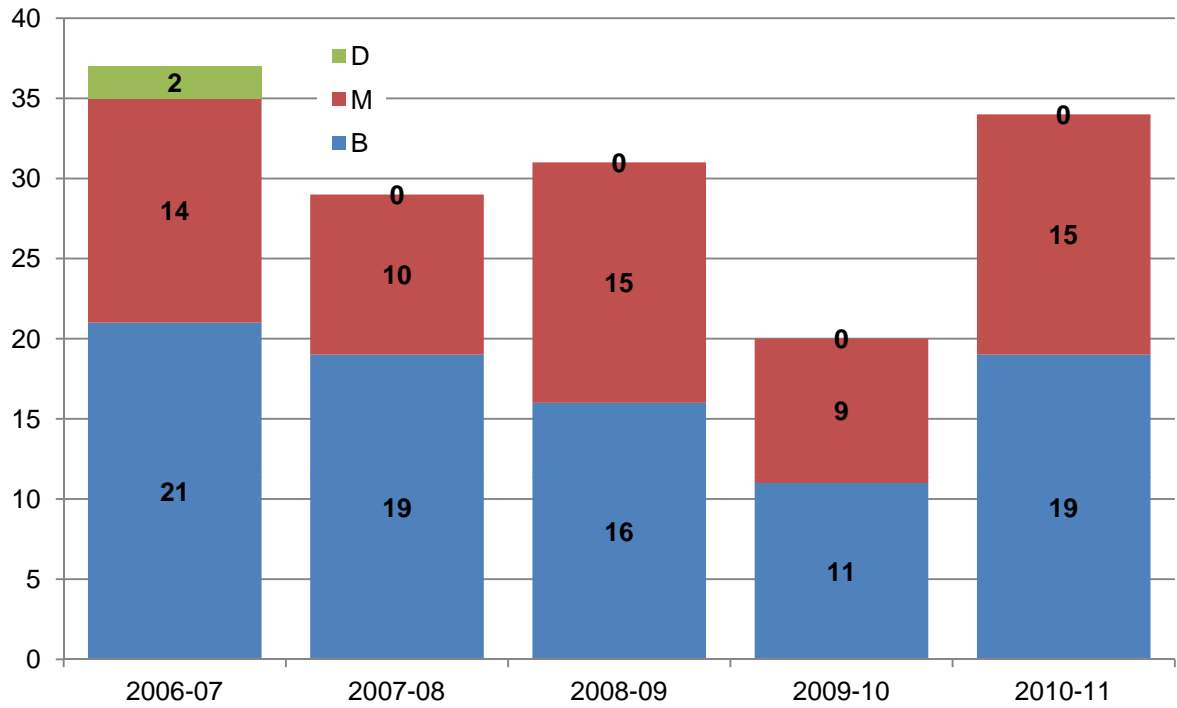


	Fall 2007		Fall 2008		Fall 2009		Fall 2010		Fall 2011	
	UG	G	UG	G	UG	G	UG	G	UG	G
Department of Classics	78	48	75	50	84	43	87	43	83	43
Female	44	25	40	27	46	22	46	20	47	20
American Indian/Native Alaskan	0	0	0	0	0	0	1	1	1	1
Asian/Pacific Islander	0	2	0	4	0	5	0	3	1	2
Black	1	0	0	0	1	0	2	0	4	0
Hispanic	4	0	4	0	6	0	7	0	5	0
White	39	23	36	23	39	17	35	16	35	16
Non-Resident Alien	0	0	0	0	0	0	0	0	0	0
Not Reported	0	0	0	0	0	0	1	0	1	1
Male	34	23	35	23	38	21	41	23	36	23
American Indian/Native Alaskan	0	0	0	0	0	0	0	0	0	0
Asian/Pacific Islander	0	0	0	0	0	0	1	0	2	0
Black	0	0	1	0	0	0	0	0	1	0
Hispanic	2	0	4	0	3	0	4	2	3	2
White	31	23	29	23	33	21	35	21	30	21
Non-Resident Alien	0	0	0	0	0	0	0	0	0	0
Not Reported	1	0	1	0	2	0	1	0	0	0

UG = Undergraduate; G = Graduate

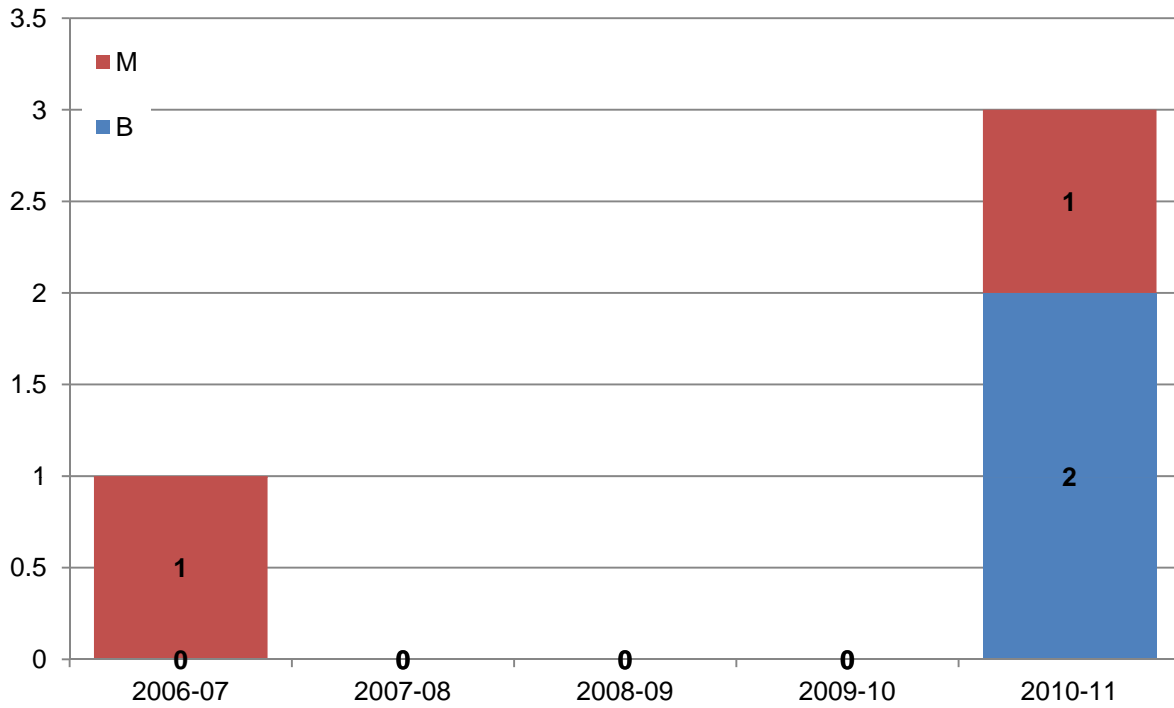
Source: Fall Preliminary Student Instruction Files (SIFP)

COLLEGE OF ARTS & SCIENCES
CLASSICS
DEGREES AWARDED BY SEMESTER
CIP Code: 161200



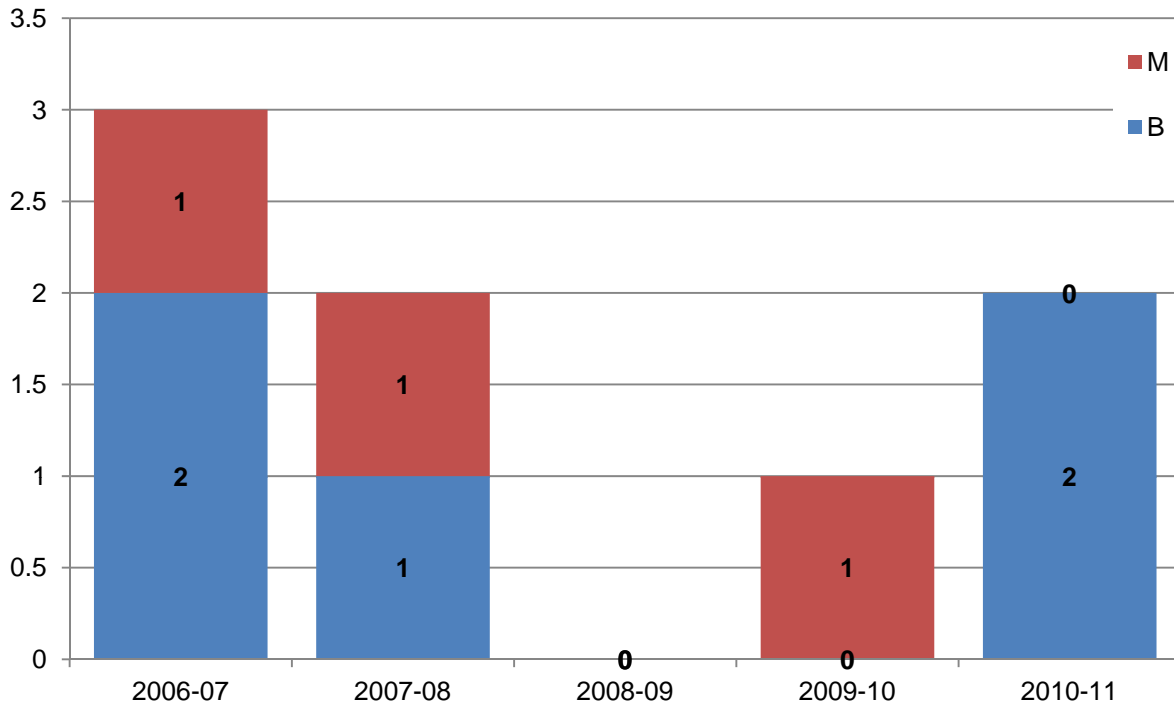
		Bachelors	Masters	Doctorate	Total
2006-07	Summer '06	3	7	0	10
	Fall '06	4	1	1	6
	Spring '07	14	6	1	21
2006-07	Total	21	14	2	37
2007-08	Summer '07	4	6	0	10
	Fall '07	3	3	0	6
	Spring '08	12	1	0	13
2007-08	Total	19	10	0	29
2008-09	Summer '08	4	6	0	10
	Fall '08	3	3	0	6
	Spring '09	9	6	0	15
2008-09	Total	16	15	0	31
2009-10	Summer '09	2	2	0	4
	Fall '09	3	2	0	5
	Spring '10	6	5	0	11
2009-10	Total	11	9	0	20
2010-11	Summer '10	4	4	0	8
	Fall '10	5	4	0	9
	Spring '11	10	7	0	17
2010-11	Total	19	15	0	34

COLLEGE OF ARTS & SCIENCES
CLASSICS - GREEK
DEGREES AWARDED BY SEMESTER
CIP Code: 161202



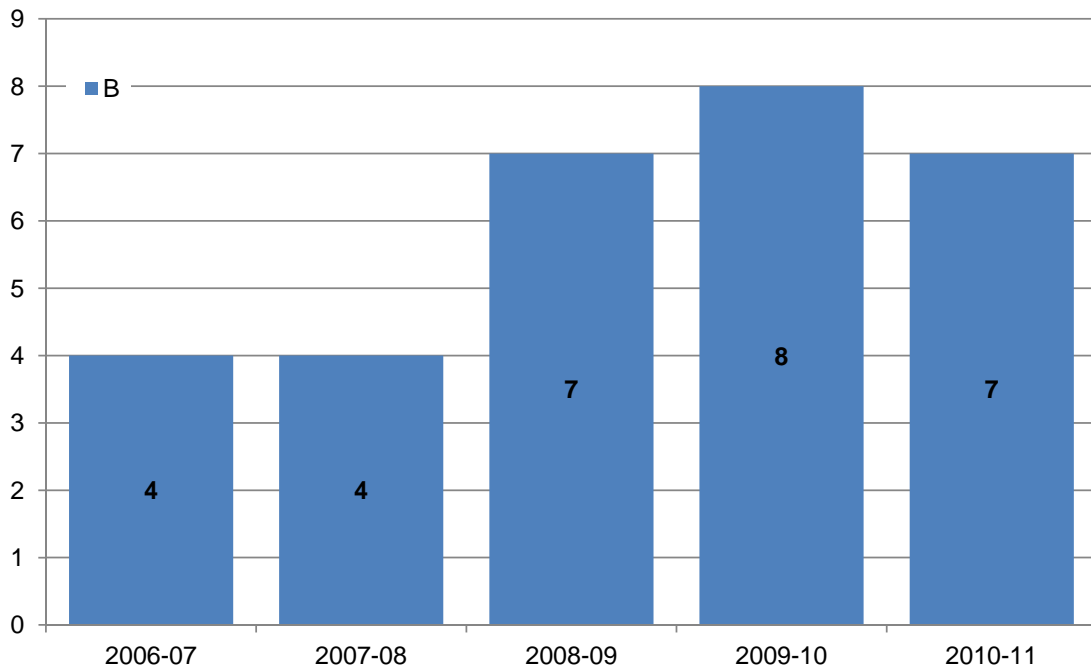
		Bachelors	Masters	Doctorate	Total
2006-07	Summer '06	0	0	0	0
	Fall '06	0	0	0	0
	Spring '07	0	0	0	0
2006-07	Total	0	0	0	0
2007-08	Summer '07	0	0	0	0
	Fall '07	0	0	0	0
	Spring '08	0	1	0	1
2007-08	Total	0	1	0	1
2008-09	Summer '08	0	0	0	0
	Fall '08	0	0	0	0
	Spring '09	0	0	0	0
2008-09	Total	0	0	0	0
2009-10	Summer '09	0	0	0	0
	Fall '09	0	0	0	0
	Spring '10	0	0	0	0
2009-10	Total	0	0	0	0
2010-11	Summer '10	0	0	0	0
	Fall '10	0	0	0	0
	Spring '11	2	1	0	3
2010-11	Total	2	1	0	3

**COLLEGE OF ARTS & SCIENCES
 CLASSICS - LATIN
 DEGREES AWARDED BY SEMESTER
 CIP Code: 161203**



		Bachelors	Masters	Doctorate	Total
2006-07	Summer '06	0	1	0	1
	Fall '06	2	0	0	2
	Spring '07	0	0	0	0
2006-07	Total	2	1	0	3
2007-08	Summer '07	1	1	0	2
	Fall '07	0	0	0	0
	Spring '08	0	0	0	0
2007-08	Total	1	1	0	2
2008-09	Summer '08	0	0	0	0
	Fall '08	0	0	0	0
	Spring '09	0	0	0	0
2008-09	Total	0	0	0	0
2009-10	Summer '09	0	0	0	0
	Fall '09	0	0	0	0
	Spring '10	0	1	0	1
2009-10	Total	0	1	0	1
2010-11	Summer '10	1	0	0	1
	Fall '10	0	0	0	0
	Spring '11	1	0	0	1
2010-11	Total	2	0	0	2

College of Arts and Sciences
 Department of Classics
 Degrees Awarded by Semester - Double Majors
 CIP Code: 161200

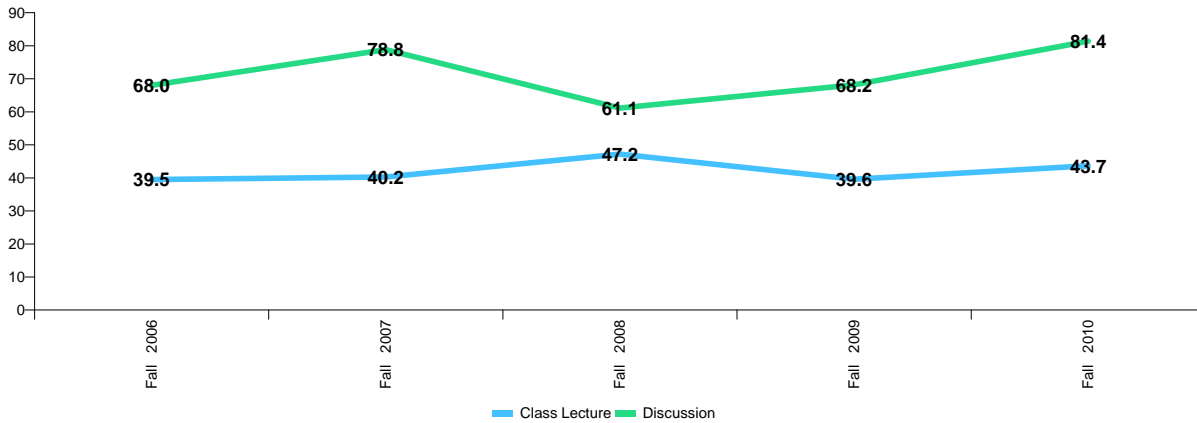


		Bachelors	Masters	Doctorate	Total
2006-07	Summer '06	1	0	0	1
	Fall '06	0	0	0	0
	Spring '07	3	0	0	3
2006-07	Total	4	0	0	4
2007-08	Summer '07	1	0	0	1
	Fall '07	1	0	0	1
	Spring '08	2	0	0	2
2007-08	Total	4	0	0	4
2008-09	Summer '08	1	0	0	1
	Fall '08	2	0	0	2
	Spring '09	4	0	0	4
2008-09	Total	7	0	0	7
2009-10	Summer '09	1	0	0	1
	Fall '09	1	0	0	1
	Spring '10	6	0	0	6
2009-10	Total	8	0	0	8
2010-11	Summer '10	0	0	0	0
	Fall '10	0	0	0	0
	Spring '11	7	0	0	7
2010-11	Total	7	0	0	7

Double degrees are earned by students who declared two majors, but earned one degree. The degrees represented on this page were reported as secondary and thus not otherwise reported to CIP 161200.

Average Class Size
College of Arts and Sciences
Department of Classics

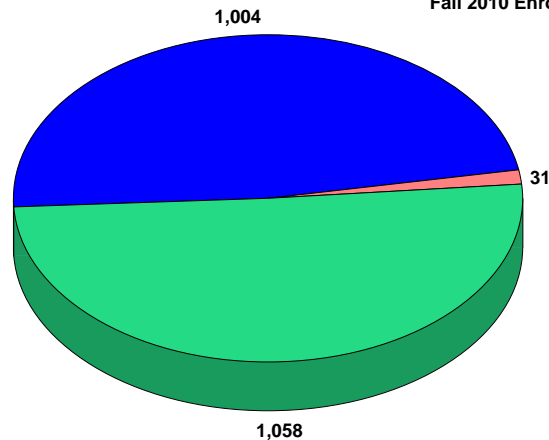
Average Class Size (Cs, Ds, Ls only)



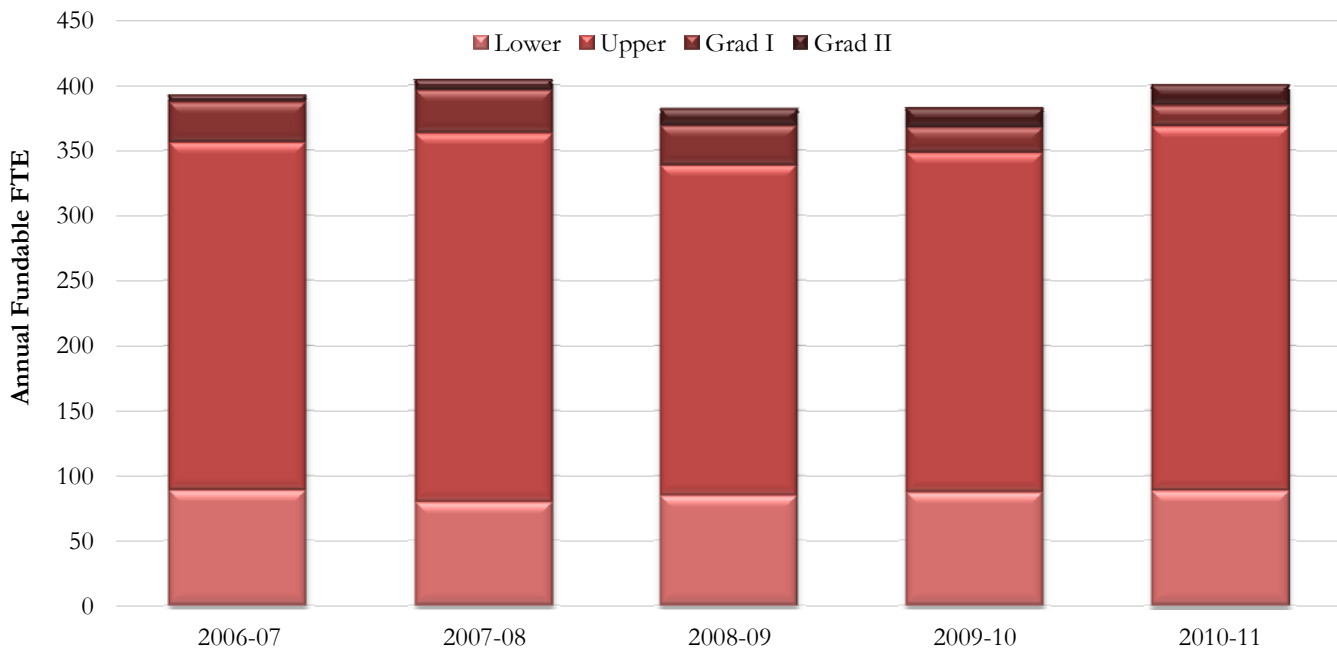
		Class Lecture			Discussion		
		Enrollment	Number of Sections	Class Size	Enrollment	Number of Sections	Class Size
Fall 2006	Lower	183	1	183.0	30	2	15.0
	Upper	870	22	39.5	844	9	93.8
	Graduate	53	5	10.6	10	2	5.0
	Total	1,106	28	39.5	884	13	68.0
Fall 2007	Lower	299	3	99.7	16	1	16.0
	Upper	834	20	41.7	836	9	92.9
	Graduate	74	7	10.6	15	1	15.0
	Total	1,207	30	40.2	867	11	78.8
Fall 2008	Lower	200	4	50.0	16	1	16.0
	Upper	768	14	54.9	858	9	95.3
	Graduate	70	4	17.5	43	5	8.6
	Total	1,038	22	47.2	917	15	61.1
Fall 2009	Lower	381	6	63.5	10	1	10.0
	Upper	634	14	45.3	859	8	107.4
	Graduate	54	7	7.7	17	4	4.3
	Total	1,069	27	39.6	886	13	68.2
Fall 2010	Lower	406	5	81.2	12	1	12.0
	Upper	556	13	42.8	1,036	10	103.6
	Graduate	42	5	8.4	10	2	5.0
	Total	1,004	23	43.7	1,058	13	81.4

■ Class Lecture
 ■ Discussion
 ■ All Others

Fall 2010 Enrollment by Class Type



Fundable Student Credit Hours and FTE
College of Arts and Sciences
Department of Classics



Fundable SCH Produced

Annual Fundable FTE Contribution

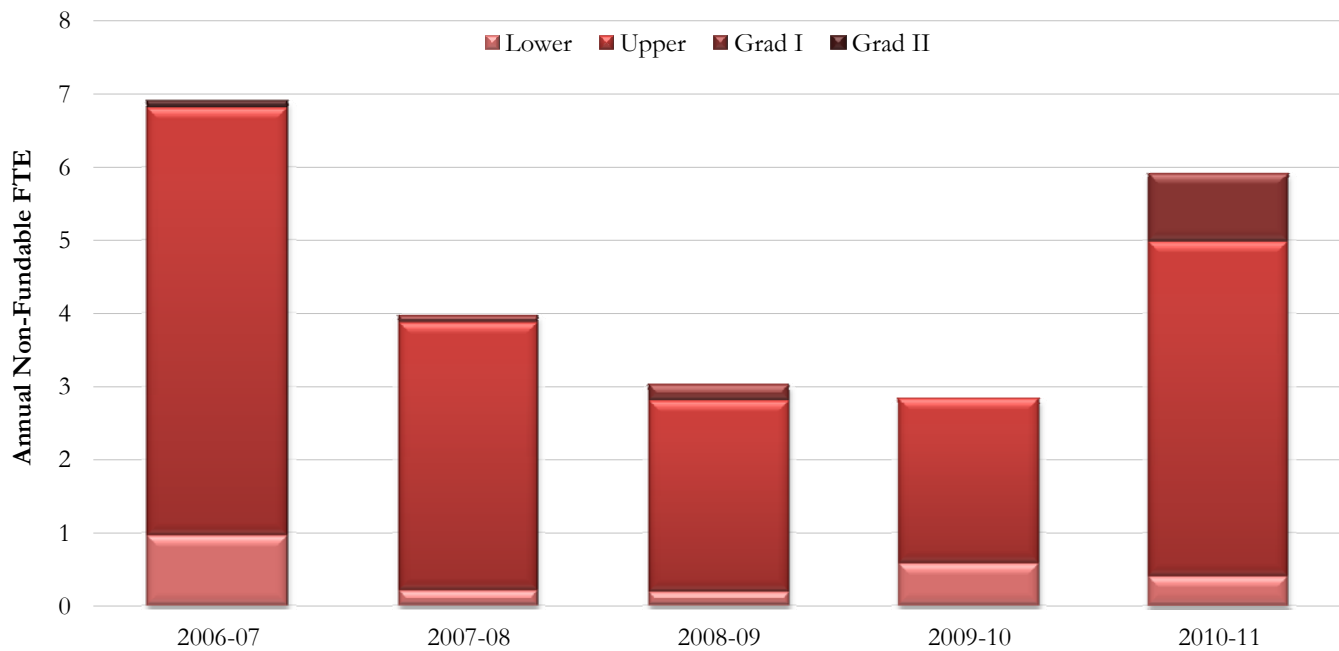
	2006	2007	2008	2009	2010		2006	2007	2008	2009	2010
Summer						Summer					
Lower	232	176	180	176	216	Lower	5.8	4.4	4.5	4.4	5.4
Upper	1,374	1,417	1,485	1,674	1,635	Upper	34.4	35.4	37.1	41.9	40.9
Grad I	203	217	148	129	89	Grad I	6.3	6.8	4.6	4.0	2.8
Grad II	30	72	114	180	152	Grad II	0.9	2.3	3.6	5.6	4.8
Total	1,839	1,882	1,927	2,159	2,092	Total	47.4	48.9	49.8	55.9	53.8
Fall						Fall					
Lower	1,379	1,805	1,512	2,013	2,191	Lower	34.5	45.1	37.8	50.3	54.8
Upper	5,124	5,052	4,941	4,550	4,896	Upper	128.1	126.3	123.5	113.8	122.4
Grad I	363	424	428	273	210	Grad I	11.3	13.3	13.4	8.5	6.6
Grad II	64	93	142	140	180	Grad II	2.0	2.9	4.4	4.4	5.6
Total	6,930	7,374	7,023	6,976	7,477	Total	175.9	187.6	179.1	177.0	189.4
Spring						Spring					
Lower	1,910	1,175	1,666	1,272	1,099	Lower	47.8	29.4	41.7	31.8	27.5
Upper	4,211	4,878	3,746	4,225	4,682	Upper	105.3	122.0	93.7	105.6	117.1
Grad I	428	423	410	234	214	Grad I	13.4	13.2	12.8	7.3	6.7
Grad II	91	92	156	158	186	Grad II	2.8	2.9	4.9	4.9	5.8
Total	6,640	6,568	5,978	5,889	6,181	Total	169.2	167.4	153.0	149.7	157.0
Annual						Annual					
Lower	3,521	3,156	3,358	3,461	3,506	Lower	88.0	78.9	84.0	86.5	87.7
Upper	10,709	11,347	10,172	10,449	11,213	Upper	267.7	283.7	254.3	261.2	280.3
Grad I	994	1,064	986	636	513	Grad I	31.1	33.3	30.8	19.9	16.0
Grad II	185	257	412	478	518	Grad II	5.8	8.0	12.9	14.9	16.2
Total	15,409	15,824	14,928	15,024	15,750	Total	392.6	403.9	381.9	382.6	400.2

Note: Lower and Upper hours are divided by 40 to obtain annual FTE; for all Graduate, hours are divided by 32
Source: Final Student Instruction Files (SIF)

Non-Fundable Student Credit Hours and FTE

College of Arts and Sciences

Department of Classics



Non-Fundable SCH Produced

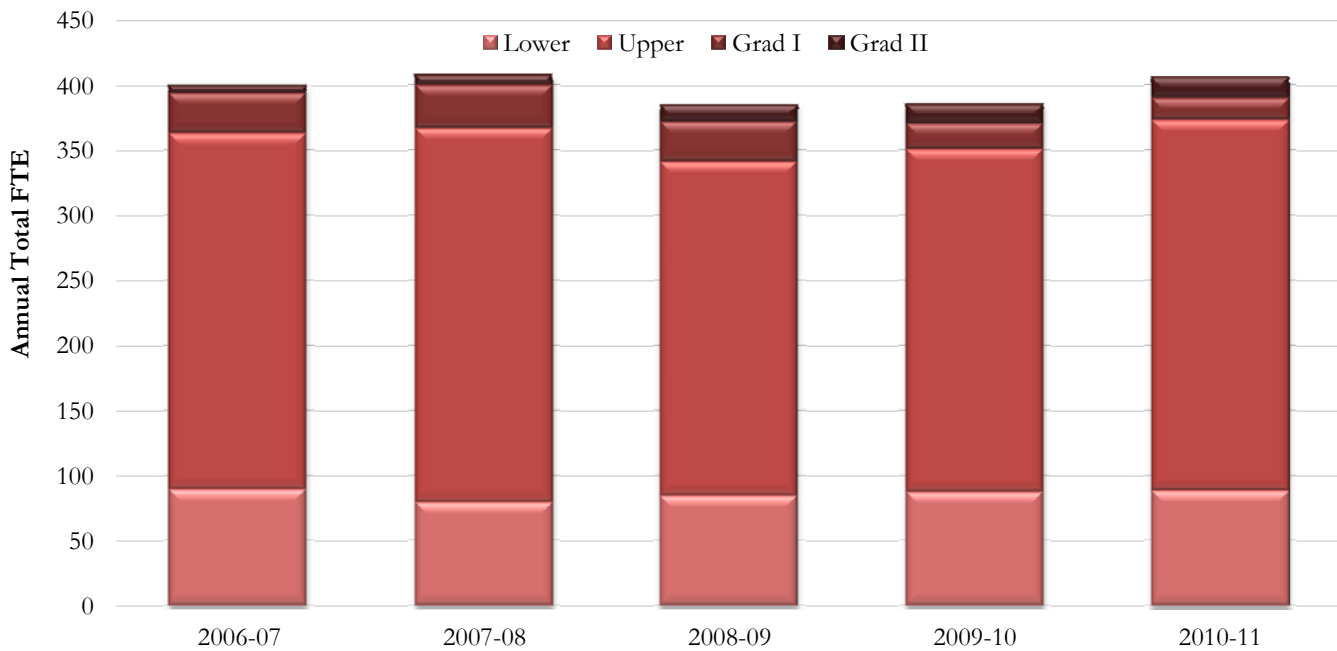
Annual Non-Fundable FTE Contribution

Non-Fundable SCH Produced						Annual Non-Fundable FTE Contribution					
Summer	2006	2007	2008	2009	2010	Summer	2006	2007	2008	2009	2010
Lower	0	4	0	12	4	Lower	0.0	0.1	0.0	0.3	0.1
Upper	87	84	63	72	141	Upper	2.2	2.1	1.6	1.8	3.5
Grad I	0	0	3	0	27	Grad I	0.0	0.0	0.1	0.0	0.8
Grad II	0	0	0	0	0	Grad II	0.0	0.0	0.0	0.0	0.0
Total	87	88	66	84	172	Total	2.2	2.2	1.7	2.1	4.5
Fall	2006	2007	2008	2009	2010	Fall	2006	2007	2008	2009	2010
Lower	4	0	0	0	8	Lower	0.1	0.0	0.0	0.0	0.2
Upper	60	6	12	0	6	Upper	1.5	0.2	0.3	0.0	0.2
Grad I	0	3	3	0	0	Grad I	0.0	0.1	0.1	0.0	0.0
Grad II	0	0	0	0	0	Grad II	0.0	0.0	0.0	0.0	0.0
Total	64	9	15	0	14	Total	1.6	0.2	0.4	0.0	0.4
Spring	2007	2008	2009	2010	2011	Spring	2007	2008	2009	2010	2011
Lower	34	4	7	11	4	Lower	0.9	0.1	0.2	0.3	0.1
Upper	87	57	30	18	36	Upper	2.2	1.4	0.8	0.5	0.9
Grad I	0	0	1	0	3	Grad I	0.0	0.0	0.0	0.0	0.1
Grad II	3	0	0	0	0	Grad II	0.1	0.0	0.0	0.0	0.0
Total	124	61	38	29	43	Total	3.1	1.5	1.0	0.7	1.1
Annual	2006-07	2007-08	2008-09	2009-10	2010-11	Annual	2006-07	2007-08	2008-09	2009-10	2010-11
Lower	38	8	7	23	16	Lower	1.0	0.2	0.2	0.6	0.4
Upper	234	147	105	90	183	Upper	5.9	3.7	2.6	2.3	4.6
Grad I	0	3	7	0	30	Grad I	0.0	0.1	0.2	0.0	0.9
Grad II	3	0	0	0	0	Grad II	0.1	0.0	0.0	0.0	0.0
Total	275	158	119	113	229	Total	6.9	4.0	3.0	2.8	5.9

Note: Lower and Upper hours are divided by 40 to obtain annual FTE; for all Graduate, hours are divided by 32

Source: Final Student Instruction Files (SIF)

Total Student Credit Hours and FTE
College of Arts and Sciences
Department of Classics



Total SCH Produced

Annual Total FTE Contribution

	2006	2007	2008	2009	2010		2006	2007	2008	2009	2010
Summer						Summer					
Lower	232	180	180	188	220	Lower	5.8	4.5	4.5	4.7	5.5
Upper	1,461	1,501	1,548	1,746	1,776	Upper	36.5	37.5	38.7	43.7	44.4
Grad I	203	217	151	129	116	Grad I	6.3	6.8	4.7	4.0	3.6
Grad II	30	72	114	180	152	Grad II	0.9	2.3	3.6	5.6	4.8
Total	1,926	1,970	1,993	2,243	2,264	Total	49.6	51.1	51.5	58.0	58.3
Fall						Fall					
Lower	1,383	1,805	1,512	2,013	2,199	Lower	34.6	45.1	37.8	50.3	55.0
Upper	5,184	5,058	4,953	4,550	4,902	Upper	129.6	126.5	123.8	113.8	122.6
Grad I	363	427	431	273	210	Grad I	11.3	13.3	13.5	8.5	6.6
Grad II	64	93	142	140	180	Grad II	2.0	2.9	4.4	4.4	5.6
Total	6,994	7,383	7,038	6,976	7,491	Total	177.5	187.8	179.5	177.0	189.7
Spring						Spring					
Lower	1,944	1,179	1,673	1,283	1,103	Lower	48.6	29.5	41.8	32.1	27.6
Upper	4,298	4,935	3,776	4,243	4,718	Upper	107.5	123.4	94.4	106.1	118.0
Grad I	428	423	411	234	217	Grad I	13.4	13.2	12.8	7.3	6.8
Grad II	94	92	156	158	186	Grad II	2.9	2.9	4.9	4.9	5.8
Total	6,764	6,629	6,016	5,918	6,224	Total	172.4	168.9	153.9	150.4	158.1
Annual						Annual					
Lower	3,559	3,164	3,365	3,484	3,522	Lower	89.0	79.1	84.1	87.1	88.1
Upper	10,943	11,494	10,277	10,539	11,396	Upper	273.6	287.4	256.9	263.5	284.9
Grad I	994	1,067	993	636	543	Grad I	31.1	33.3	31.0	19.9	17.0
Grad II	188	257	412	478	518	Grad II	5.9	8.0	12.9	14.9	16.2
Total	15,684	15,982	15,047	15,137	15,979	Total	399.5	407.8	385.0	385.4	406.1

Note: Lower and Upper hours are divided by 40 to obtain annual FTE; for all Graduate, hours are divided by 32
Source: Final Student Instruction Files (SIF)

Department of Classics
E & G Student Credit Hours and Headcount Productivity
By Instructor Type

	Student					Student					
	FTE	Credit Hrs	SCH/FTE	Headcount	FTE	FTE	Credit Hrs	SCH/FTE	Headcount	FTE	
Fall 2006						Spring 2007					
Faculty	12.9428	4356.0	336.6	1435	110.9	Faculty	12.8609	3408.0	265.0	1115	86.7
OPS Regular Faculty	0	0.0	0.0	0	0.0	OPS Regular Faculty	0	0.0	0.0	0	0.0
OPS Faculty Adjuncts	0.5	714.0	1,428.0	238	476.0	OPS Faculty Adjuncts	0.5	423.0	846.0	141	282.0
Graduate Assistants	17.7	2086.0	117.9	649	36.7	Graduate Assistants	18.75	2846.0	151.8	899	47.9
A & P / USPS	0	0.0	0.0	0	0.0	A & P / USPS	0	0.0	0.0	0	0.0
Others	0	0.0	0.0	0	0.0	Others	0	0.0	0.0	0	0.0
	31.1428	7156.0	229.8	2322	74.6		32.1109	6677.0	207.9	2155	67.1
Fall 2007						Spring 2008					
Faculty	13.5297	4,649.0	343.6	1,538	113.7	Faculty	13.5	4,039.0	299.2	1,334	98.8
OPS Regular Faculty	0	0.0	0.0	0	0.0	OPS Regular Faculty	0	0.0	0.0	0	0.0
OPS Faculty Adjuncts	0	0.0	0.0	0	0.0	OPS Faculty Adjuncts	0	0.0	0.0	0	0.0
Graduate Assistants	18.21	2,743.0	150.6	860	47.2	Graduate Assistants	17.75	2,596.0	146.3	809	45.6
A & P / USPS	0	0.0	0.0	0	0.0	A & P / USPS	0	0.0	0.0	0	0.0
Others	0	0.0	0.0	0	0.0	Others	0	0.0	0.0	0	0.0
	31.7397	7,392.0	232.9	2,398	75.6		31.25	6,635.0	212.3	2,143	68.6
Fall 2008						Spring 2009					
Faculty	10.8982	4,590.0	421.2	1,531	140.5	Faculty	13.0003	3,443.0	264.8	1,143	87.9
OPS Regular Faculty	0	0.0	0.0	0	0.0	OPS Regular Faculty	0	0.0	0.0	0	0.0
OPS Faculty Adjuncts	0.2474	94.0	380.0	25	101.1	OPS Faculty Adjuncts	0	0.0	0.0	0	0.0
Graduate Assistants	16.3319	2,625.0	160.7	820	50.2	Graduate Assistants	17.525	2,504.0	142.9	775	44.2
A & P / USPS	0	0.0	0.0	0	0.0	A & P / USPS	0	0.0	0.0	0	0.0
Others	0	0.0	0.0	0	0.0	Others	0	0.0	0.0	0	0.0
	27.4775	7,309.0	266.0	2,376	86.5		30.5253	5,947.0	194.8	1,918	62.8
Fall 2009						Spring 2010					
Faculty	11.885	4,802.0	404.0	1,597.0	134.4	Faculty	12.9902	3,222.0	248.0	1,057	81.4
OPS Regular Faculty	0	0.0	0.0	0.0	0.0	OPS Regular Faculty	0	0.0	0.0	0	0.0
OPS Faculty Adjuncts	0.499	189.0	378.8	57.0	114.2	OPS Faculty Adjuncts	0.5	433.0	866.0	143	286.0
Graduate Assistants	16.0842	2,198.0	136.7	679.0	42.2	Graduate Assistants	16.285	2,206.0	135.5	677	41.6
A & P / USPS	0	0.0	0.0	0.0	0.0	A & P / USPS	0	0.0	0.0	0	0.0
Others	0	0.0	0.0	0.0	0.0	Others	0	0.0	0.0	0	0.0
	28.4682	7,189.0	252.5	2,333	82.0		29.7752	5,861.0	196.8	1,877	63.0
Fall 2010						Spring 2011					
Faculty	12.90	4,815.0	373.2	1,602.0	124.2	Faculty	12.5202	3,366.0	268.8	1,106	88.3
OPS Regular Faculty	0	0.0	0.0	0.0	0.0	OPS Regular Faculty	0	0.0	0.0	0	0.0
OPS Faculty Adjuncts	0.7501	573.0	763.9	186.0	248.0	OPS Faculty Adjuncts	0.75	343.0	457.3	110	146.7
Graduate Assistants	18	2,242.0	124.6	687.0	38.2	Graduate Assistants	17	2,586.0	152.1	802	47.2
A & P / USPS	0	0.0	0.0	0.0	0.0	A & P / USPS	0	0.0	0.0	0	0.0
Others	0	0.0	0.0	0.0	0.0	Others	0	0.0	0.0	0	0.0
	31.65	7,630.0	241.1	2,475	78.2		30.2702	6,295.0	208.0	2,018	66.7

Classics - Faculty Courses & Hours

Fall 2006 - Spring 2007			Organized Classes (C,D,L)								
E&G Faculty Member	Class	FTE	SCH		Total	Headcount		Total	Sections		Total
			UGrad	Grad	SCH	UGrad	Grad	HC	UGrad	Grad	#Sec.
CAIRNS	9001	2.00	84.0	75.0	159.0	28.0	24.0	52.0	4.0	3.0	7.0
DE GRUMMOND	9001	2.00	774.0	96.0	870.0	258.0	32.0	290.0	6.0	4.0	10.0
FULKERSON	9002	1.93	378.0	95.0	473.0	125.0	30.0	155.0	3.0	11.0	14.0
LEAR	9004	2.00	1,386.0	48.0	1,434.0	462.0	15.0	477.0	4.0	3.0	7.0
LUKE	9003	2.00	738.0	33.0	771.0	246.0	10.0	256.0	3.0	1.0	4.0
MARINCOLA	9001	1.99	644.0	81.0	725.0	209.0	24.0	233.0	2.0	4.0	6.0
PFAFF	9002	1.99	239.0	108.0	347.0	79.0	33.0	112.0	4.0	5.0	9.0
PULLEN	9001	1.93	162.0	90.0	252.0	54.0	38.0	92.0	2.0	5.0	7.0
SICKINGER	9002	1.97	765.0	14.0	779.0	243.0	4.0	247.0	4.0	2.0	6.0
SLAVEVA-GRIFFIN	9003	2.00	322.0	69.0	391.0	104.0	21.0	125.0	3.0	4.0	7.0
STONE	9003	2.00	506.0	63.0	569.0	165.0	20.0	185.0	3.0	2.0	5.0
STOVER	9003	2.00	616.0	45.0	661.0	205.0	15.0	220.0	4.0	3.0	7.0
TATUM	9001	1.00	150.0	48.0	198.0	50.0	16.0	66.0	1.0	1.0	2.0
TOTALS			6,764.0	865.0	7,629.0	2,228.0	282.0	2,510.0	43.0	48.0	91.0
AVERAGE PER FACULTY			520.3	66.5	586.8	171.4	21.7	193.1	3.3	3.7	7.0

Classics - Faculty Courses & Hours

Fall 2006 - Spring 2007			Individualized (G,T,I,O,P,R,S,Z)								
E&G Faculty Member	Class	FTE	SCH		Total	Headcount		Total	Sections		Total
			UGrad	Grad	SCH	UGrad	Grad	HC	UGrad	Grad	#Sec.
CAIRNS	9001	2.00	-	-	-	-	-	-	-	-	-
DE GRUMMOND	9001	2.00	-	35.0	35.0	-	10.0	10.0	-	10.0	10.0
FULKERSON	9002	1.93	3.0	9.0	12.0	1.0	3.0	4.0	1.0	3.0	4.0
LEAR	9004	2.00	-	-	-	-	-	-	-	-	-
LUKE	9003	2.00	-	-	-	-	-	-	-	-	-
MARINCOLA	9001	1.99	-	12.0	12.0	-	4.0	4.0	-	4.0	4.0
PFAFF	9002	1.99	-	11.0	11.0	-	4.0	4.0	-	4.0	4.0
PULLEN	9001	1.93	-	28.0	28.0	-	6.0	6.0	-	3.0	3.0
SICKINGER	9002	1.97	-	6.0	6.0	-	1.0	1.0	-	1.0	1.0
SLAVEVA-GRIFFIN	9003	2.00	-	9.0	9.0	-	3.0	3.0	-	3.0	3.0
STONE	9003	2.00	-	22.0	22.0	-	8.0	8.0	-	8.0	8.0
STOVER	9003	2.00	-	-	-	-	-	-	-	-	-
TATUM	9001	1.00	-	-	-	-	-	-	-	-	-
TOTALS			3.0	132.0	135.0	1.0	39.0	40.0	1.0	36.0	37.0
AVERAGE PER FACULTY			3.0	16.5	16.9	1.0	4.9	5.0	1.0	4.5	4.6

Classics - Faculty Courses & Hours

Fall 2006 - Spring 2007			All Types								
E&G Faculty Member	Class	FTE	SCH		TOTAL	Headcount		TOTAL	Sections		TOTAL
			UGrad	Grad	SCH	UGrad	Grad	HC	UGrad	Grad	#Sec.
CAIRNS	9001	2.00	84.0	75.0	159.0	28.0	24.0	52.0	4.0	3.0	7.0
DE GRUMMOND	9001	2.00	774.0	131.0	905.0	258.0	42.0	300.0	6.0	14.0	20.0
FULKERSON	9002	1.93	381.0	104.0	485.0	126.0	33.0	159.0	4.0	14.0	18.0
LEAR	9004	2.00	1,386.0	48.0	1,434.0	462.0	15.0	477.0	4.0	3.0	7.0
LUKE	9003	2.00	738.0	33.0	771.0	246.0	10.0	256.0	3.0	1.0	4.0
MARINCOLA	9001	1.99	644.0	93.0	737.0	209.0	28.0	237.0	2.0	8.0	10.0
PFAFF	9002	1.99	239.0	119.0	358.0	79.0	37.0	116.0	4.0	9.0	13.0
PULLEN	9001	1.93	162.0	118.0	280.0	54.0	44.0	98.0	2.0	8.0	10.0
SICKINGER	9002	1.97	765.0	20.0	785.0	243.0	5.0	248.0	4.0	3.0	7.0
SLAVEVA-GRIFFIN	9003	2.00	322.0	78.0	400.0	104.0	24.0	128.0	3.0	7.0	10.0
STONE	9003	2.00	506.0	85.0	591.0	165.0	28.0	193.0	3.0	10.0	13.0
STOVER	9003	2.00	616.0	45.0	661.0	205.0	15.0	220.0	4.0	3.0	7.0
TATUM	9001	1.00	150.0	48.0	198.0	50.0	16.0	66.0	1.0	1.0	2.0
TOTALS			6,767.0	997.0	7,764.0	2,229.0	321.0	2,550.0	44.0	84.0	128.0
AVERAGE PER FACULTY			520.5	76.7	597.2	171.5	24.7	196.2	3.4	6.5	9.8

Classics- Faculty Courses & Hours

Fall 2010 - Spring 2011			Organized Classes (C,D,L)								
E&G Faculty Member	Class	FTE	SCH		Total	Headcount		Total	Sections		Total
			UGrad	Grad	SCH	UGrad	Grad	HC	UGrad	Grad	#Sec.
BRANSCOME	9121	1.90	2,876.0	3.0	2,879.0	954.0	1.0	955.0	6.0	1.0	7.0
CAIRNS	9001	2.00	72.0	66.0	138.0	24.0	22.0	46.0	3.0	4.0	7.0
DE-GRUMMOND	9001	2.00	733.0	39.0	772.0	244.0	13.0	257.0	7.0	3.0	10.0
FULKERSON	9002	2.00	423.0	39.0	462.0	141.0	13.0	154.0	3.0	3.0	6.0
LUKE	9003	2.00	615.0	27.0	642.0	206.0	9.0	215.0	2.0	1.0	3.0
MARINCOLA	9001	2.00	111.0	63.0	174.0	37.0	29.0	66.0	1.0	3.0	4.0
PFAFF	9002	2.00	324.0	82.0	406.0	110.0	28.0	138.0	4.0	5.0	9.0
PULLEN	9001	2.00	-	3.0	3.0	-	1.0	1.0	-	1.0	1.0
ROMANO	9003	1.52	-	-	-	-	-	-	-	-	-
SICKINGER	9002	2.00	369.0	75.0	444.0	123.0	25.0	148.0	4.0	3.0	7.0
SLAVEVA-GRIFFIN	9002	2.00	699.0	72.0	771.0	233.0	24.0	257.0	3.0	2.0	5.0
STONE	9003	2.00	489.0	66.0	555.0	163.0	22.0	185.0	4.0	4.0	8.0
STOVER	9003	2.00	576.0	75.0	651.0	192.0	27.0	219.0	5.0	8.0	13.0
TOTALS			7,287.0	610.0	7,897.0	2,427.0	214.0	2,641.0	42.0	38.0	80.0
AVERAGE PER FACULTY			662.5	50.8	658.1	220.6	17.8	220.1	3.8	3.2	6.7

Classics- Faculty Courses & Hours

Fall 2010 - Spring 2011			Individualized (G,T,I,O,P,R,S,Z)								
E&G Faculty Member	Class	FTE	SCH		Total	Headcount		Total	Sections		Total
			UGrad	Grad	SCH	UGrad	Grad	HC	UGrad	Grad	#Sec.
BRANSCOME	9121	1.90	-	-	-	-	-	-	-	-	-
CAIRNS	9001	2.00	-	9.0	9.0	-	3.0	3.0	-	3.0	3.0
DE-GRUMMOND	9001	2.00	6.0	26.0	32.0	2.0	5.0	7.0	2.0	5.0	7.0
FULKERSON	9002	2.00	6.0	48.0	54.0	2.0	10.0	12.0	2.0	10.0	12.0
LUKE	9003	2.00	1.0	6.0	7.0	1.0	2.0	3.0	1.0	2.0	3.0
MARINCOLA	9001	2.00	-	-	-	-	-	-	-	-	-
PFAFF	9002	2.00	-	15.0	15.0	-	3.0	3.0	-	3.0	3.0
PULLEN	9001	2.00	-	45.0	45.0	-	5.0	5.0	-	5.0	5.0
ROMANO	9003	1.52	6.0	3.0	9.0	2.0	1.0	3.0	2.0	1.0	3.0
SICKINGER	9002	2.00	-	7.0	7.0	-	3.0	3.0	-	3.0	3.0
SLAVEVA-GRIFFIN	9002	2.00	39.0	6.0	45.0	13.0	2.0	15.0	13.0	2.0	15.0
STONE	9003	2.00	-	42.0	42.0	-	7.0	7.0	-	7.0	7.0
STOVER	9003	2.00	19.0	-	19.0	6.0	-	6.0	5.0	-	5.0
TOTALS			77.0	207.0	284.0	26.0	41.0	67.0	25.0	41.0	66.0
AVERAGE PER FACULTY			12.8	20.7	25.8	4.3	4.1	6.1	4.2	4.1	6.0

Classics- Faculty Courses & Hours

Fall 2010 - Spring 2011			All Types								
E&G Faculty Member	Class	FTE	SCH		TOTAL	Headcount		TOTAL	Sections		TOTAL
			UGrad	Grad	SCH	UGrad	Grad	HC	UGrad	Grad	#Sec.
BRANSCOME	9121	1.90	2,876.0	3.0	2,879.0	954.0	1.0	955.0	6.0	1.0	7.0
CAIRNS	9001	2.00	72.0	75.0	147.0	24.0	25.0	49.0	3.0	7.0	10.0
DE-GRUMMOND	9001	2.00	739.0	65.0	804.0	246.0	18.0	264.0	9.0	8.0	17.0
FULKERSON	9002	2.00	429.0	87.0	516.0	143.0	23.0	166.0	5.0	13.0	18.0
LUKE	9003	2.00	616.0	33.0	649.0	207.0	11.0	218.0	3.0	3.0	6.0
MARINCOLA	9001	2.00	111.0	63.0	174.0	37.0	29.0	66.0	1.0	3.0	4.0
PFAFF	9002	2.00	324.0	97.0	421.0	110.0	31.0	141.0	4.0	8.0	12.0
PULLEN	9001	2.00	-	48.0	48.0	-	6.0	6.0	-	6.0	6.0
ROMANO	9003	1.52	6.0	3.0	9.0	2.0	1.0	3.0	2.0	1.0	3.0
SICKINGER	9002	2.00	369.0	82.0	451.0	123.0	28.0	151.0	4.0	6.0	10.0
SLAVEVA-GRIFFIN	9002	2.00	738.0	78.0	816.0	246.0	26.0	272.0	16.0	4.0	20.0
STONE	9003	2.00	489.0	108.0	597.0	163.0	29.0	192.0	4.0	11.0	15.0
STOVER	9003	2.00	595.0	75.0	670.0	198.0	27.0	225.0	10.0	8.0	18.0
TOTALS			7,364.0	817.0	8,181.0	2,453.0	255.0	2,708.0	67.0	79.0	146.0
AVERAGE PER FACULTY			613.7	62.8	629.3	204.4	19.6	208.3	5.6	6.1	11.2

**Operating Budget E&G Position FTE and Rate Totals
By Pay Plan, Month Type, Filled/Vacant, and Rank**

College of Arts & Sciences

Classics

		2007-08	2008-09	2009-10	2010-11	2011-12
Total All Pay Plans	FTE	21.81	17.89	18.54	17.38	17.24
	Person Years	15.69	13.36	12.67	12.66	12.64
	Current Rate	\$1,151,441	\$985,682	\$994,680	\$994,095	\$1,007,843
Filled 9- & 12-Month Faculty	FTE	15.00	13.00	13.00	13.00	12.00
	Person Years	11.46	9.97	9.97	9.97	9.22
	Current Rate	\$945,098	\$874,098	\$905,367	\$905,367	\$884,628
Vacant & Reserve Faculty	FTE	2.00	1.00			1.00
	Person Years	1.49	0.75			0.75
	Current Rate	\$115,633	\$32,000			\$32,000
Summer Faculty	FTE	2.31	1.39	3.04	1.88	1.74
	Person Years	0.24	0.14	0.21	0.19	0.17
	Current Rate	\$23,330	\$12,204	\$20,248	\$19,663	\$20,077
Filled Support	FTE	2.50	2.50	2.50	2.50	2.50
	Person Years	2.50	2.50	2.50	2.50	2.50
	Current Rate	\$67,380	\$67,380	\$69,065	\$69,065	\$71,138

Source: Academic Profile 4.1 with OMNI account

E & G Expenditures by Budget Category, By Major Object code, Departments within School

College of Arts & Sciences

Classics

Category Code	Object Code	2006-07	2007-08	2008-09	2009-10	2010-11
SALARY	FACULTY	\$956,038	\$894,710	\$933,751	\$869,354	\$939,254
	USPS	\$52,444	\$69,880	\$70,005	\$69,064	\$71,184
	FRINGE BENEFITS	\$264,395	\$281,672	\$292,896	\$279,210	\$293,368
	OTHER SALARY	\$600				
SALARY		\$1,273,477	\$1,246,262	\$1,296,652	\$1,217,628	\$1,303,806
EXPENSE	CONSULTING & OTHER	\$2,660	\$300	\$300		
	EDUCATIONAL SUPPLIES	\$29	\$3,051			
	EQUIPMENT & BOOKS	\$2,034		\$329	\$370	\$533
	EXPENSE OTHER	\$4,950	\$3,771			
	MAINT & HEATING SUPPLIES			\$56		
	MOTOR FUELS & LUBRICANTS		\$19			
	OFFICE SUPPLIES	\$3,737	\$1,669	\$3,384	\$3,175	\$3,447
	OTHER CURRENT CHARGES	\$80	\$1,000	\$250	\$2,203	\$1,000
	OTHER MATERIALS & SUPPLIES	\$2,142	\$426	\$838	\$481	\$133
	PRINTING		\$849	\$1,083		\$1,000
	REPAIRS & MAINTENANCE	\$9,585	\$3,343	\$2,995	\$3,138	\$4,292
	TELEPHONE	\$7,870	\$8,380	\$7,898	\$2,952	\$2,252
	TRAVEL	\$11,275	\$3,780	\$4,163	\$6,588	\$1,527
	POSTAGE			\$2,084	\$1,023	\$2,253
EXPENSE		\$44,362	\$26,588	\$23,380	\$19,930	\$16,437
OPS	FRINGE BENEFITS	\$1,133	\$297	\$233		
	FACULTY ADJUNCTS	\$13,369	\$5,897	\$4,000		
	GRAD ASST	\$426,655	\$454,497	\$433,689	\$439,461	\$442,104
	STUDENT ASST	\$716				
	ADJUNCT FACULTY				\$14,500	\$6,600
	OPS FACULTY					\$16,000
	OPS FRINGE BENEFITS				\$345	\$355
OPS		\$441,873	\$460,691	\$437,922	\$454,306	\$465,059
OCO	DATA PROCESSING EQUIPMENT	\$4,170				
OCO		\$4,170				
	Department Total:	\$1,763,882	\$1,733,541	\$1,757,954	\$1,691,864	\$1,785,302

Program : Classics

	Number of students who entered the program between 1999 and 2009				Record the number who within the various time spans listed below completed degree within given number of years after enrolling								
	Number of entering doctoral students	Number of students who left the program without a master's or doctoral degree	Number of students who left the program after receiving a master's degree or specialist	Number of students admitted to doctoral candidacy	3 years or less	4 years	5 years	6 years	7 years	8 years	9 years	10 years or more	Number still enrolled after 10 years
1999-2000	2	1		2						1			
2000-2001	0												
2001-2002	1		1										
2002-2003	0												
2003-2004	1			1									
2004-2005	0												
2005-2006	4			4									
2006-2007	5	1	1	2									
2007-2008	3			1									
2008-2009	2												
2009-2010	0												

**Quality Enhancement Review
Unit Accomplishment Summary
Teaching and Research Overview
2010-2011**

**Name of Program:
Classics**

Faculty member	Instructional assignment (%)	Number of organized courses taught (C,D,L)	Number of individualized courses (G,T,I,O,P,R,S,Z)	Instructional contact hours	Number of directed individual studies (DIS)	Number of PhD students supervised	Research assignment (%)	NRC-countable publications and/or creative products	ALL SOURCES			
									Number of proposals submitted	Number of proposals funded	Total grant funds awarded	Number of honors and awards
BRANSCOME		7.0	0.0	17.0								
CAIRNS		7.0	3.0	13.5								
DE GRUMMOND		10.0	7.0	29.0								
FULKERSON		6.0	12.0	20.0								
LUKE		3.0	3.0	16.5								
MARINCOLA		4.0	0.0	7.0								
PFAFF		9.0	3.0	14.0								
PULLEN		1.0	5.0	8.0								
ROMANO		0.0	3.0	1.5								
SICKINGER		7.0	3.0	14.5								
SLAVEVA-GRIFFIN		5.0	15.0	28.5								
STONE		8.0	7.0	21.6								
STOVER		13.0	5.0	21.5								
SUM		80.0	66.0	212.6								
MEAN		6.2	5.1	16.4								
MEDIAN		7.0	3.0	16.5								

