

Electrical & Computer Engineering Data Booklet

Fall Term 2011
Quality Enhancement
Review

Prepared by the Office of Institutional Research



**Electrical & Computer Engineering
FALL TERM 2011**

Most recent available statistics

		Report Page No(s)
Degrees Offered	4	1
Faculty	20	2
Majors (Fall 2010 Headcount)		
Undergraduate	223	3-5
Graduate - Masters	47	3-5
Graduate - Specialist	-	3-5
Graduate - Doctorate	26	3-5
Total	296	3-5
2010-2011 Degrees Awarded		
Bachelors	41	6-7
Masters	16	6-7
Specialist	-	6-7
Doctorate	6	6-7
Total	63	6-7
Average Class Size (Fall 2010)		
Undergraduate		
Lower - classroom	0.0	8
Upper - classroom	20.3	8
Graduate - classroom	10.0	8
Credit Hours - Annual (2010-2011)		
Fundable	5,294	9
Non-fundable	33	10
Total	5,327	11
University (fundable)	1,074,302	SIF*
2010-2011 Department Fundable Hours As Percent of University Fundable Hours	0.5%	calculated
Student FTE's- Annual (state fundable 2010-2011)		
Lower	9.6	9
Upper	91.6	9
Grad I	24.2	9
Grad II	14.8	9
Total	140.2	9
Credit Hours Percentages by Instructor Type (Fall 2009)		12
Faculty	48.6%	calculated
OPS Regular Faculty	0.0%	calculated
OPS Faculty Adjuncts	15.3%	calculated
Graduate Assistants	3.8%	calculated
A&P/USPS	0.0%	calculated
Phased Retirement	0.0%	calculated
Others	32.3%	calculated
Average Total Credit Hours Taught per Faculty FTE (All Hours, 2009-2010)		
Fall Term	81.3	12
Spring Term	79.2	12
Academic Year	160.5	calculated
Annual Student FTE's Taught by all Faculty (Fall & Spring total hrs converted to annual FTE's, 2009-2010)		16
Undergraduate (academic year hours/40)	68.4	calculated
Graduate (academic year hours/32)	34.1	calculated
Total	102.5	calculated

*Note: most statistics are based on the Electrical & Computer Engineering account 216xxx. Related accounts may not be included in expenditures and in faculty courses and hours taught. *SIF=Student Information File*

Electrical & Computer Engineering

Fall Term 2011

Table of Contents

	<u>Page</u>
Degree Programs	1
The Faculty.....	2
Enrollment by major	3
Degrees Awarded.....	6
Average Class Size	8
Credit Hours by Semester/Fall & Spring/Annual	
Fundable	9
Non-fundable.....	10
Total	11
Credit Hours and Courses by Instructor Type.....	
E&G Detail 2005-06 to 2009-10	12
Faculty Courses and Hours 2005-06 and 2009-10 (Individual Faculty Summary)	
2005-06	13
2009-10	15
E&G Budgeted Faculty and Staff Lines.....	17
E&G Expenditures by Summary Object Code	18
Graduate Student Completion	19
Unit Accomplishment Summary Pages 1 and 2.....	20

**COLLEGE OF ENGINEERING
ELECTRICAL AND COMPUTER ENGINEERING
DEGREE PROGRAMS**

Major Name	Major Code	CIP Code	Degree Offered
Electrical Engineering	558010	141001	Bachelors
Electrical Engineering	558010	141001	Masters
Electrical Engineering	558010	141001	Doctorate

Major Name	Major Code	CIP Code	Degree Offered
Computer Engineering	558020	140901	Bachelors

Source: Degree Program Inventory, FSU and SUS

**COLLEGE OF ENGINEERING
ELECTRICAL AND COMPUTER ENGINEERING
FACULTY DEMOGRAPHICS**

Florida State University

				Admin.							
Last Name	First Name	Degree	Degree University	Code	Class & Title	Mo.	Tenure	FSU Hire	Gender	Race	Citizenship
Andrei	Petru	Ph.D.	University Of Maryland	99	9002 - Associate Professor	9	1	2004-08-09	Male	Other	Resident Alien
Baldwin	Thomas	Ph.D.	Virginia Polytechnic Institute	99	9001 - Professor	9	1	1999-08-09	Male	White	U.S. Citizen
DeBrunner	Linda	Ph.D.	Virginia Polytechnic Institute	99	9002 - Associate Professor	9	1	2006-08-09	Female	White	U.S. Citizen
DeBrunner	Victor	Ph.D.	Virginia Polytechnic Institute	99	9001 - Professor	9	1	2006-08-09	Male	White	U.S. Citizen
Edrington	Chris	Ph.D.	University Of Missouri-Rolla	99	9003 - Assistant Professor	9	2	2007-08-09	Male	White	U.S. Citizen
Foo	Simon	Ph.D.	University Of South Carolina	C1	9001 - Professor	9	1	1989-08-08	Male	Asian	U.S. Citizen
Kwan	Bing	Ph.D.	Ohio State University	99	9002 - Associate Professor	9	1	1985-01-04	Male	Asian	U.S. Citizen
Li	Hui	Ph.D.	University Of Tennessee	99	9002 - Associate Professor	9	1	2002-06-03	Female	Asian	Resident Alien
Meyer-Baese	Uwe	Ph.D.	Darmstadt University, Germany	99	9002 - Associate Professor	9	1	2000-12-21	Male	White	U.S. Citizen
Roberts	Rodney	Ph.D.	Purdue University	99	9001 - Professor	9	1	1994-08-08	Male	White	U.S. Citizen
Tung	Leonard	Ph.D.	Texas Tech University	99	9002 - Associate Professor	9	1	1984-08-03	Male	Asian	U.S. Citizen
Zheng	Jianping	Ph.D.	SUNY-Buffalo	99	9001 - Professor	9	1	1997-07-01	Male	Asian	U.S. Citizen

Florida State University-Panama City

				Admin.							
Last Name	First Name	Degree	Degree University	Code	Class & Title	Mo.	Tenure	Hire	Gender	Race	Citizenship
Brooks	Geoffrey W.	Ph.D.	Florida State University	99	9120 - Associate In			3	Male	White	U.S. Citizen
Rajagopalan	Ramesh	Ph.D.		99	9121 - Assistant In			3	Male	Asian	

Florida State University-CAPS

				Admin.							
Last Name	First Name	Degree	Degree University	Code	Class & Title	Mo.	Tenure	Hire	Gender	Race	Citizenship
Dale	Steinar	Ph.D.	Strathclyde, Glasgow, Scotland	C4	Adjunct			1	Male	White	

Florida A&M University

				Admin.							
Last Name	First Name	Degree	Degree University	Code	Class & Title	Mo.	Tenure	Hire	Gender	Race	Citizenship
Arora	Rajendra K.	Ph.D.	University of Dundee	99	9001 - Professor			1	Male	Asian	Resident Alien
Harvey	Bruce A.	Ph.D.	Georgia Tech	99	9002 - Associate Professor			1	Male	White	U.S. Citizen
Perry	Reginald J.	Ph.D.	Georgia Tech	D2	9001 - Professor			1	Male	Black	U.S. Citizen
Weatherspoon	Mark H.	Ph.D.	University of South Florida	99	9002 - Associate Professor			1	Male	Black	U.S. Citizen
Yu	Ming	Ph.D.	Rutgers University	G1	9002 - Associate Professor			1	Male	Asian	U.S. Citizen

Administrative Codes:

C1 - Chair
C4 - Director of CAPS
D2 - Associate Dean
G1 - Graduate Coordinator
99 - No Administrative Duties

Tenure Codes:

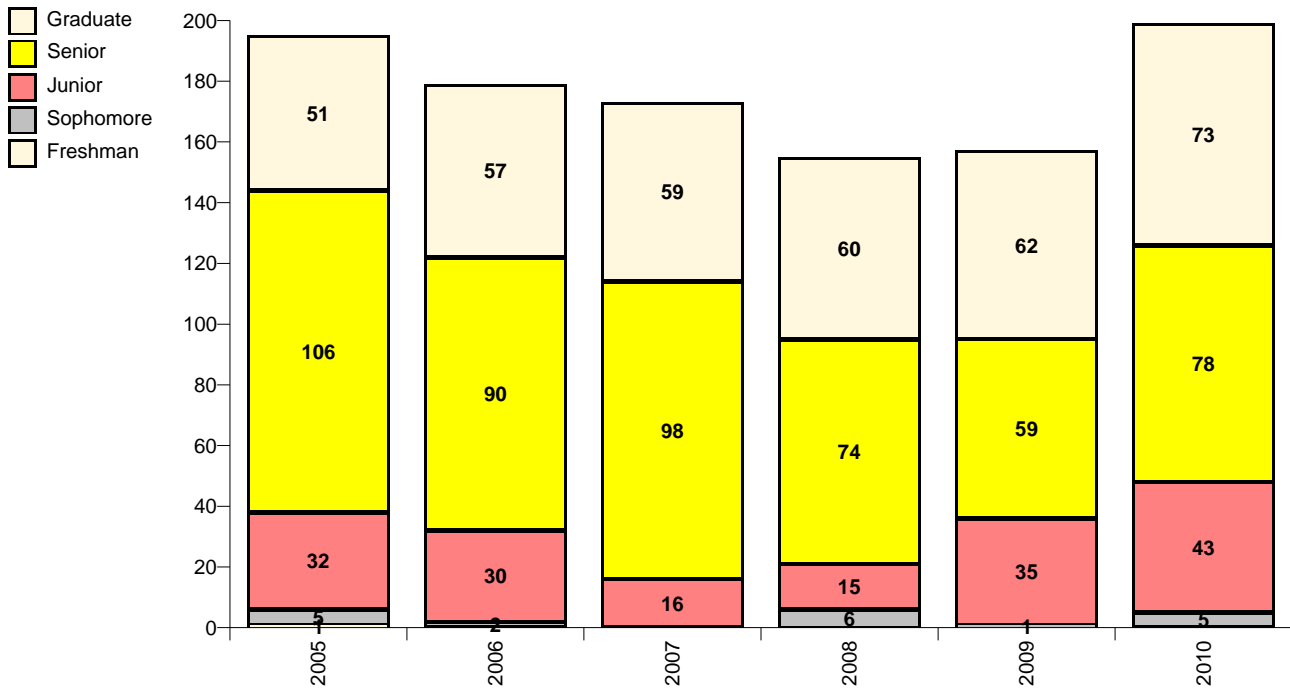
1 - Tenured
2 - Tenure-Earning
3 - Non-Tenured

Last Updated on June 14, 2011

**COLLEGE OF ENGINEERING
ELECTRICAL AND COMPUTER ENGINEERING
HEADCOUNT ENROLLMENT BY FALL SEMESTER**

Electrical Engineering

558010



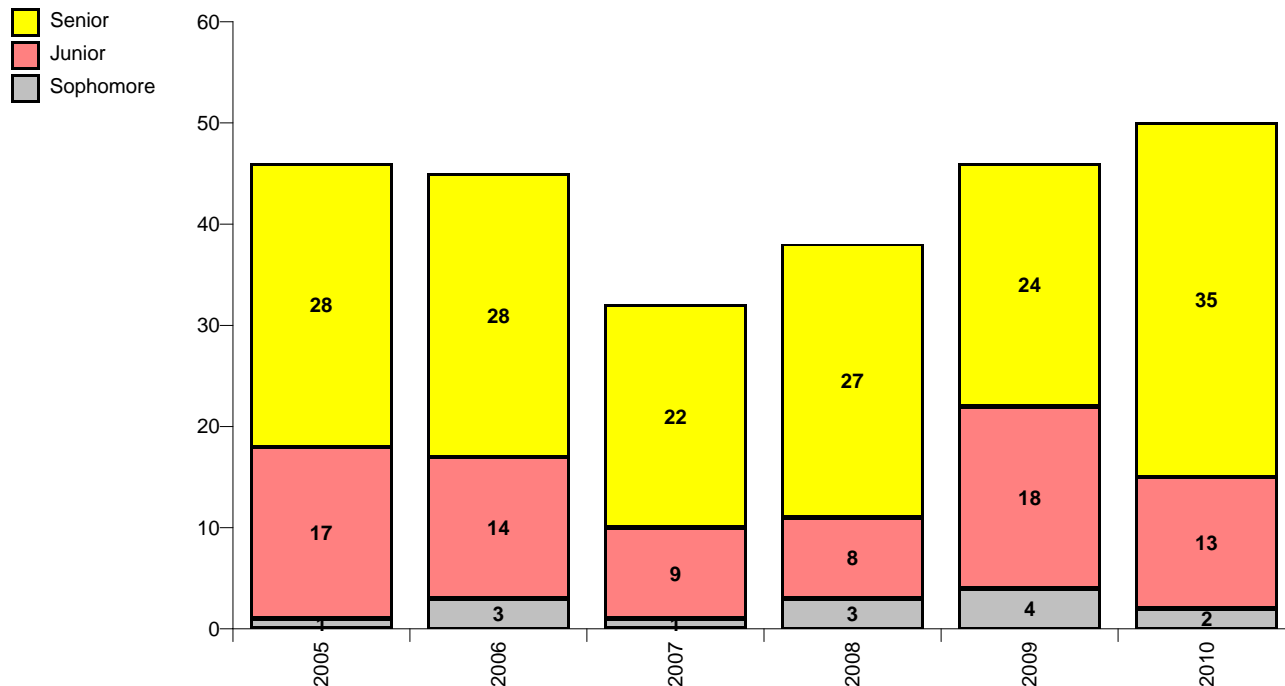
	2005	2006	2007	2008	2009	2010
Freshman	1					
Sophomore	5	2		6	1	5
Junior	32	30	16	15	35	43
Senior	106	90	98	74	59	78
Graduate - Masters	19	22	20	28	34	47
Graduate - Doctorate	32	35	39	32	28	26
Total	195	179	173	155	157	199

Source: Fall Preliminary Student Data Course Files

**COLLEGE OF ENGINEERING
ELECTRICAL AND COMPUTER ENGINEERING
HEADCOUNT ENROLLMENT BY FALL SEMESTER**

Computer Engineering

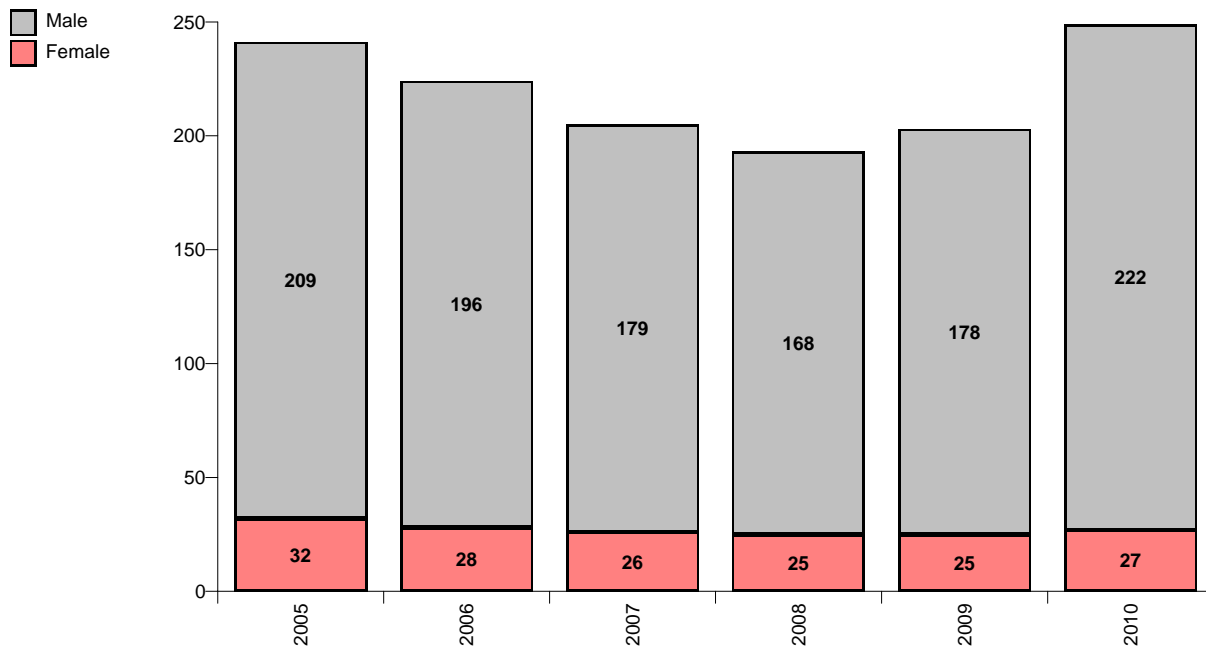
558020



	2005	2006	2007	2008	2009	2010
Sophomore	1	3	1	3	4	2
Junior	17	14	9	8	18	13
Senior	28	28	22	27	24	35
Total	46	45	32	38	46	50

Source: Fall Preliminary Student Data Course Files

College of Engineering
Electrical and Computer Engineering
Enrollment by Fall Semester

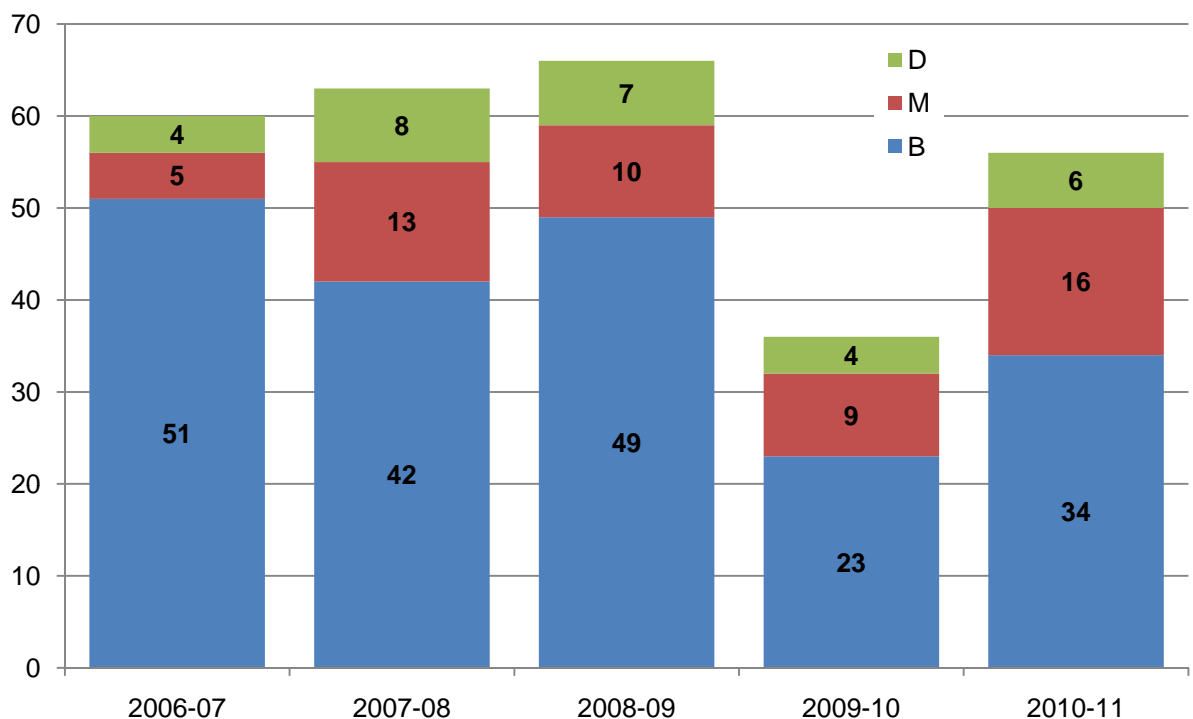


		2005	2006	2007	2008	2009	2010
Female	Asian or Pacific Islander	1	2	5	4	1	1
	Black	7	5	4	4	6	8
	Hispanic	6	5	3	4	3	3
	Non-Resident Alien	6	5	4	6	7	7
	White	12	11	10	7	8	8
	Female Total	32	28	26	25	25	27
Male	American Indian or Native Alaskan					2	3
	Asian or Pacific Islander	10	12	12	8	6	10
	Black	41	29	24	18	24	32
	Hispanic	24	23	14	16	15	19
	Non-Resident Alien	31	33	38	37	37	35
	White	102	97	90	87	91	119
	Not Reported	1	2	1	2	3	4
Male Total	209	196	179	168	178	222	
Department Total		241	224	205	193	203	249

Source: Fall Preliminary Student Data Course Files

**COLLEGE OF ENGINEERING
ELECTRICAL AND COMPUTER ENGINEERING
DEGREES AWARDED BY SEMESTER**

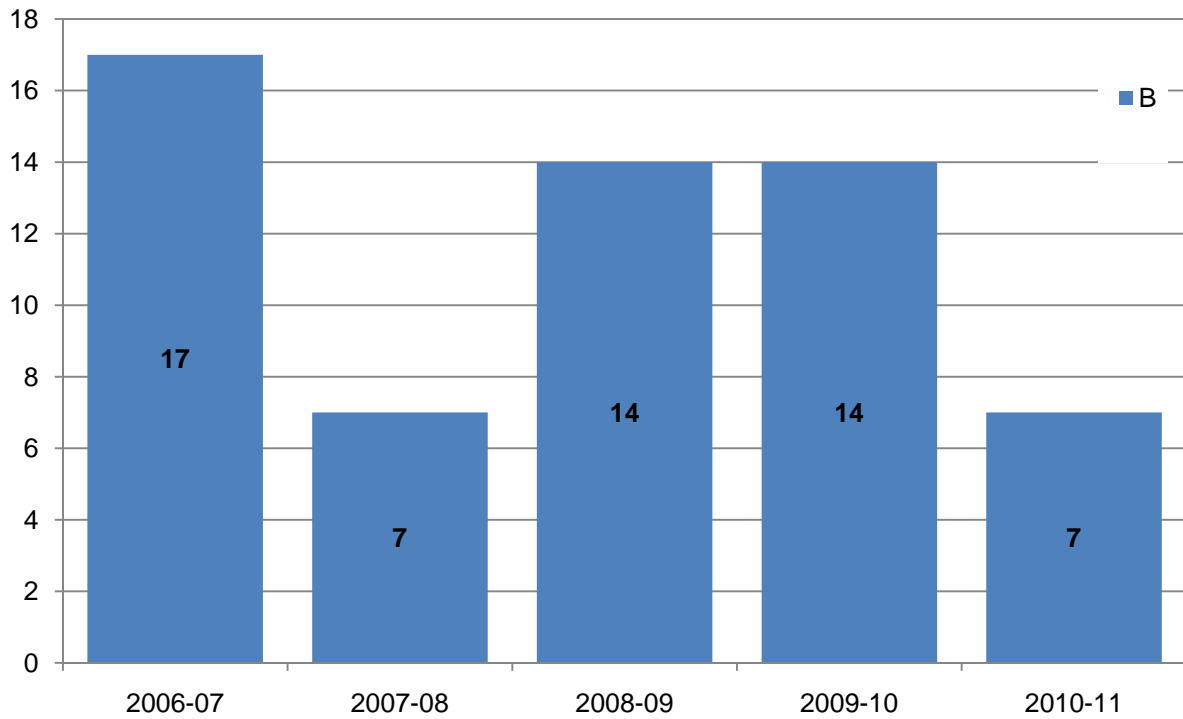
CIP Code: 141001



		Bachelors	Masters	Doctorate	Total
2006-07	Summer '06	7	1	0	8
	Fall '06	22	1	2	25
	Spring '07	22	3	2	27
2006-07	Total	51	5	4	60
2007-08	Summer '07	8	2	0	10
	Fall '07	17	7	5	29
	Spring '08	17	4	3	24
2007-08	Total	42	13	8	63
2008-09	Summer '08	8	0	1	9
	Fall '08	23	4	3	30
	Spring '09	18	6	3	27
2008-09	Total	49	10	7	66
2009-10	Summer '09	3	2	1	6
	Fall '09	3	3	2	8
	Spring '10	17	4	1	22
2009-10	Total	23	9	4	36
2010-11	Summer '10	12	4	5	21
	Fall '10	6	4	1	11
	Spring '11	16	8	0	24
2010-11	Total	34	16	6	56

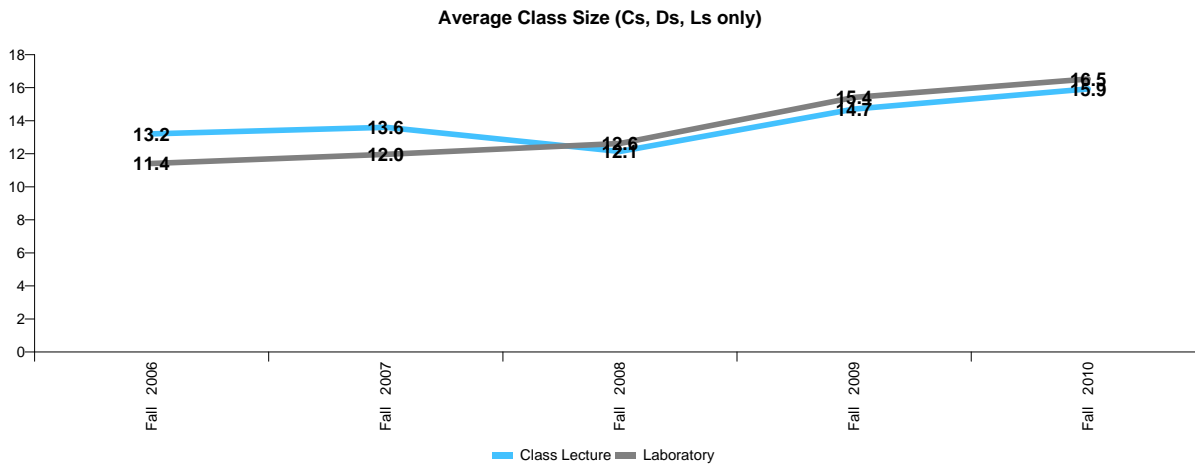
**COLLEGE OF ENGINEERING
ELECTRICAL AND COMPUTER ENGINEERING
DEGREES AWARDED BY SEMESTER**

CIP Code: 140901



		Bachelors	Masters	Doctorate	Total
2006-07	Summer '06	2	0	0	2
	Fall '06	6	0	0	6
	Spring '07	9	0	0	9
2006-07	Total	17	0	0	17
2007-08	Summer '07	1	0	0	1
	Fall '07	3	0	0	3
	Spring '08	3	0	0	3
2007-08	Total	7	0	0	7
2008-09	Summer '08	2	0	0	2
	Fall '08	6	0	0	6
	Spring '09	6	0	0	6
2008-09	Total	14	0	0	14
2009-10	Summer '09	3	0	0	3
	Fall '09	1	0	0	1
	Spring '10	10	0	0	10
2009-10	Total	14	0	0	14
2010-11	Summer '10	0	0	0	0
	Fall '10	1	0	0	1
	Spring '11	6	0	0	6
2010-11	Total	7	0	0	7

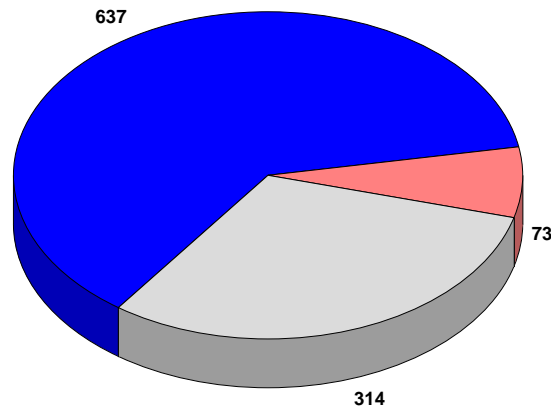
**COLLEGE OF ENGINEERING
ELECTRICAL AND COMPUTER ENGINEERING
AVERAGE CLASS SIZE**



	Class Lecture			Laboratory		
	Enrollment	Number of Sections	Class Size	Enrollment	Number of Sections	Class Size
Fall 2006						
Lower				187	4	46.8
Upper	608	37	16.4	201	30	6.7
Graduate	105	17	6.2			
Total	713	54	13.2	388	34	11.4
Fall 2007						
Lower				157	4	39.3
Upper	566	35	16.2	178	24	7.4
Graduate	114	15	7.6			
Total	680	50	13.6	335	28	12.0
Fall 2008						
Lower				166	3	55.3
Upper	446	32	13.9	137	21	6.5
Graduate	149	17	8.8			
Total	595	49	12.1	303	24	12.6
Fall 2009						
Lower				157	5	31.4
Upper	480	28	17.1	105	12	8.8
Graduate	167	16	10.4			
Total	647	44	14.7	262	17	15.4
Fall 2010						
Lower				169	5	33.8
Upper	467	23	20.3	145	14	10.4
Graduate	170	17	10.0			
Total	637	40	15.9	314	19	16.5

■ Class Lecture
■ Laboratory
■ All Others

Fall 2010 Enrollment by Class Type



**College of Engineering
Electrical and Computer Engineering
Fundable Student Credit Hours and FTE**

SCH Produced

Summer

Level	2007	2008	2009	2010
Lower	15		34	33
Upper	541	348	421	456
Grad 1	17	15	51	62
Grad II	30	29	51	72
Total	603	392	557	623

Fall

Level	2007	2008	2009	2010
Lower	157	164	157	169
Upper	1,836	1,493	1,542	1,539
Grad 1	151	257	327	371
Grad II	334	290	251	190
Total	2,478	2,204	2,277	2,269

Spring

Level	2008	2009	2010	2011
Lower	222	171	177	183
Upper	1,668	1,263	1,591	1,669
Grad 1	185	252	324	340
Grad II	313	263	225	210
Total	2,388	1,949	2,317	2,402

Fall & Spring

Level	2007-08	2008-09	2009-10	2010-11
Lower	379	335	334	352
Upper	3,504	2,756	3,133	3,208
Grad 1	336	509	651	711
Grad II	647	553	476	400
Total	4,866	4,153	4,594	4,671

Annual

Level	2007-08	2008-09	2009-10	2010-11
Lower	394	335	368	385
Upper	4,045	3,104	3,554	3,664
Grad 1	353	524	702	773
Grad II	677	582	527	472
Total	5,469	4,545	5,151	5,294

Annual FTE Contribution

Summer

Level	2007	2008	2009	2010
Lower	0.4		0.9	0.8
Upper	13.5	8.7	10.5	11.4
Grad 1	0.5	0.5	1.6	1.9
Grad II	0.9	0.9	1.6	2.3
Total	15.4	10.1	14.6	16.4

Fall

Level	2007	2008	2009	2010
Lower	3.9	4.1	3.9	4.2
Upper	45.9	37.3	38.6	38.5
Grad 1	4.7	8.0	10.2	11.6
Grad II	10.4	9.1	7.8	5.9
Total	65.0	58.5	60.5	60.2

Spring

Level	2008	2009	2010	2011
Lower	5.6	4.3	4.4	4.6
Upper	41.7	31.6	39.8	41.7
Grad 1	5.8	7.9	10.1	10.6
Grad II	9.8	8.2	7.0	6.6
Total	62.8	51.9	61.4	63.5

Fall & Spring

Level	2007-08	2008-09	2009-10	2010-11
Lower	9.5	8.4	8.4	8.8
Upper	87.6	68.9	78.3	80.2
Grad 1	10.5	15.9	20.3	22.2
Grad II	20.2	17.3	14.9	12.5
Total	127.8	110.5	121.9	123.7

Annual

Level	2007-08	2008-09	2009-10	2010-11
Lower	9.9	8.4	9.2	9.6
Upper	101.1	77.6	88.9	91.6
Grad 1	11.0	16.4	21.9	24.2
Grad II	21.2	18.2	16.5	14.8
Total	143.2	120.5	136.5	140.1

Note: Lower and Upper hours are divided by 40 to obtain annual FTE; for Graduate I and Graduate II, hours are divided by 32

Source: Final Student Instruction Files (SIF)

Distribution of Annual FTE by Semester Within Year

	2007-08	2008-09	2009-10	2010-11
Summer	11.0%	8.6%	10.8%	11.8%
Fall	45.3%	48.5%	44.2%	42.9%
Spring	43.7%	42.9%	45.0%	45.4%
Total	100.0%	100.0%	100.0%	100.0%

**College of Engineering
Electrical and Computer Engineering
Non-Fundable Student Credit Hours and FTE**

SCH Produced

Summer

Level	2007	2008	2009	2010
Lower	0		0	1
Upper	9	0	3	3
Grad 1	0	0	0	0
Grad II	0	0	0	0
Total	9	0	3	4

Fall

Level	2007	2008	2009	2010
Lower	0	2	0	0
Upper	14	4	12	19
Grad 1	0	12	0	0
Grad II	0	9	0	0
Total	14	27	12	19

Spring

Level	2008	2009	2010	2011
Lower	1	2	0	1
Upper	10	3	10	9
Grad 1	0	6	6	0
Grad II	8	0	0	0
Total	19	11	16	10

Fall & Spring

Level	2007-08	2008-09	2009-10	2010-11
Lower	1	4	0	1
Upper	24	7	22	28
Grad 1	0	18	6	0
Grad II	8	9	0	0
Total	33	38	28	29

Annual

Level	2007-08	2008-09	2009-10	2010-11
Lower	1	4	0	2
Upper	33	7	25	31
Grad 1	0	18	6	0
Grad II	8	9	0	0
Total	42	38	31	33

Annual FTE Contribution

Summer

Level	2007	2008	2009	2010
Lower	0.0		0.0	0.0
Upper	0.2	0.0	0.1	0.1
Grad 1	0.0	0.0	0.0	0.0
Grad II	0.0	0.0	0.0	0.0
Total	0.2	0.0	0.1	0.1

Fall

Level	2007	2008	2009	2010
Lower	0.0	0.1	0.0	0.0
Upper	0.4	0.1	0.3	0.5
Grad 1	0.0	0.4	0.0	0.0
Grad II	0.0	0.3	0.0	0.0
Total	0.4	0.8	0.3	0.5

Spring

Level	2008	2009	2010	2011
Lower	0.0	0.1	0.0	0.0
Upper	0.3	0.1	0.3	0.2
Grad 1	0.0	0.2	0.2	0.0
Grad II	0.3	0.0	0.0	0.0
Total	0.5	0.3	0.4	0.3

Fall & Spring

Level	2007-08	2008-09	2009-10	2010-11
Lower	0.0	0.1	0.0	0.0
Upper	0.6	0.2	0.6	0.7
Grad 1	0.0	0.6	0.2	0.0
Grad II	0.3	0.3	0.0	0.0
Total	0.9	1.1	0.7	0.7

Annual

Level	2007-08	2008-09	2009-10	2010-11
Lower	0.0	0.1	0.0	0.1
Upper	0.8	0.2	0.6	0.8
Grad 1	0.0	0.6	0.2	0.0
Grad II	0.3	0.3	0.0	0.0
Total	1.1	1.1	0.8	0.8

Note: Lower and Upper hours are divided by 40 to obtain annual FTE; for Graduate I and Graduate II, hours are divided by 32

Source: Final Student Instruction Files (SIF)

Distribution of Annual FTE by Semester Within Year

	2007-08	2008-09	2009-10	2010-11
Summer	21.4%	0.0%	9.7%	12.1%
Fall	33.3%	71.1%	38.7%	57.6%
Spring	45.2%	28.9%	51.6%	30.3%
Total	100.0%	100.0%	100.0%	100.0%

**College of Engineering
Electrical and Computer Engineering
Total Student Credit Hours and FTE**

SCH Produced

Summer

Level	2007	2008	2009	2010
Lower	15		34	34
Upper	550	348	424	459
Grad 1	17	15	51	62
Grad II	30	29	51	72
Total	612	392	560	627

Fall

Level	2007	2008	2009	2010
Lower	157	166	157	169
Upper	1,850	1,497	1,554	1,558
Grad 1	151	269	327	371
Grad II	334	299	251	190
Total	2,492	2,231	2,289	2,288

Spring

Level	2008	2009	2010	2011
Lower	223	173	177	184
Upper	1,678	1,266	1,601	1,678
Grad 1	185	258	330	340
Grad II	321	263	225	210
Total	2,407	1,960	2,333	2,412

Fall & Spring

Level	2007-08	2008-09	2009-10	2010-11
Lower	380	339	334	353
Upper	3,528	2,763	3,155	3,236
Grad 1	336	527	657	711
Grad II	655	562	476	400
Total	4,899	4,191	4,622	4,700

Annual

Level	2007-08	2008-09	2009-10	2010-11
Lower	395	339	368	387
Upper	4,078	3,111	3,579	3,695
Grad 1	353	542	708	773
Grad II	685	591	527	472
Total	5,511	4,583	5,182	5,327

Annual FTE Contribution

Summer

Level	2007	2008	2009	2010
Lower	0.4		0.9	0.9
Upper	13.8	8.7	10.6	11.5
Grad 1	0.5	0.5	1.6	1.9
Grad II	0.9	0.9	1.6	2.3
Total	15.6	10.1	14.6	16.5

Fall

Level	2007	2008	2009	2010
Lower	3.9	4.2	3.9	4.2
Upper	46.3	37.4	38.9	39.0
Grad 1	4.7	8.4	10.2	11.6
Grad II	10.4	9.3	7.8	5.9
Total	65.3	59.3	60.8	60.7

Spring

Level	2008	2009	2010	2011
Lower	5.6	4.3	4.4	4.6
Upper	42.0	31.7	40.0	42.0
Grad 1	5.8	8.1	10.3	10.6
Grad II	10.0	8.2	7.0	6.6
Total	63.3	52.3	61.8	63.7

Fall & Spring

Level	2007-08	2008-09	2009-10	2010-11
Lower	9.5	8.5	8.4	8.8
Upper	88.2	69.1	78.9	80.9
Grad 1	10.5	16.5	20.5	22.2
Grad II	20.5	17.6	14.9	12.5
Total	128.7	111.6	122.6	124.4

Annual

Level	2007-08	2008-09	2009-10	2010-11
Lower	9.9	8.5	9.2	9.7
Upper	102.0	77.8	89.5	92.4
Grad 1	11.0	16.9	22.1	24.2
Grad II	21.4	18.5	16.5	14.8
Total	144.3	121.7	137.3	141.0

Note: Lower and Upper hours are divided by 40 to obtain annual FTE; for Graduate I and Graduate II, hours are divided by 32

Source: Final Student Instruction Files (SIF)

Distribution of Annual FTE by Semester Within Year

	2007-08	2008-09	2009-10	2010-11
Summer	11.1%	8.6%	10.8%	11.8%
Fall	45.2%	48.7%	44.2%	43.0%
Spring	43.7%	42.8%	45.0%	45.3%
Total	100.0%	100.0%	100.0%	100.0%

**Department of Electrical & Computer Engineering
All Student Credit Hours and Headcount Productivity
By Instructor Type**

	Student						Student				
	FTE	Credit Hrs	SCH/FTE	Headcount	FTE		FTE	Credit Hrs	SCH/FTE	Headcount	FTE
<u>Fall 2005</u>						<u>Spring 2006</u>					
Faculty	14.29	1516.8	106.1	568.0	39.7	Faculty	14.05	1229.5	87.5	482.0	34.3
OPS Regular Faculty	0.00	0.0	0.0	0.0	0.0	OPS Regular Faculty	0.00	0.0	0.0	0.0	0.0
OPS Faculty Adjuncts	0.70	281.0	401.4	133.0	190.0	OPS Faculty Adjuncts	0.42	377.0	897.6	167.0	397.6
Graduate Assistants	6.33	22.8	3.6	21.0	3.3	Graduate Assistants	5.69	0.0	0.0	0.0	0.0
A & P / USPS	0.00	0.0	0.0	0.0	0.0	A & P / USPS	0.00	0.0	0.0	0.0	0.0
Others	5.52	588.7	106.6	237.0	42.9	Others	4.26	732.5	171.9	320.0	75.1
	26.84	2409.3	89.8	959.0	35.7		24.42	2339.0	95.8	969.0	39.7
<u>Fall 2006</u>						<u>Spring 2007</u>					
Faculty	14.76	1,439.0	97.5	585.0	39.6	Faculty	14.09	1,051.6	74.6	386.0	27.4
OPS Regular Faculty	0.00	0.0	0.0	0.0	0.0	OPS Regular Faculty	0.00	0.0	0.0	0.0	0.0
OPS Faculty Adjuncts	0.42	0.0	0.0	0.0	0.0	OPS Faculty Adjuncts	0.83	98.9	119.2	35.0	42.2
Graduate Assistants	7.79	37.8	4.9	36.0	4.6	Graduate Assistants	8.25	211.8	25.7	155.0	18.8
A & P / USPS	0.00	0.0	0.0	0.0	0.0	A & P / USPS	0.00	0.0	0.0	0.0	0.0
Others	4.10	727.2	177.4	300.0	73.2	Others	3.69	813.7	220.7	317.0	86.0
	27.07	2,204.0	81.4	921.0	34.0		26.86	2,176.0	81.0	893.0	33.3
<u>Fall 2007</u>						<u>Spring 2008</u>					
Faculty	12.11	988.2	81.6	336.0	27.7	Faculty	14.22	1,110.9	78.1	361.0	25.4
OPS Regular Faculty	0.00	0.0	0.0	0.0	0.0	OPS Regular Faculty	0.00	0.0	0.0	0.0	0.0
OPS Faculty Adjuncts	0.66	332.4	503.6	130.0	0.0	OPS Faculty Adjuncts	0.66	295.1	447.1	100.0	151.5
Graduate Assistants	5.33	89.3	16.8	83.0	15.6	Graduate Assistants	6.74	88.1	13.1	78.0	11.6
A & P / USPS	0.00	0.0	0.0	0.0	0.0	A & P / USPS	0.00	0.0	0.0	0.0	0.0
Others	4.42	693.4	156.9	264.0	0.0	Others	3.83	482.9	126.1	223.0	58.2
	22.52	2,103.3	93.4	813.0	36.1		25.45	1,977.0	77.7	762.0	29.9
<u>Fall 2008</u>						<u>Spring 2009</u>					
Faculty	11.95	1,161.9	97.2	402.9	33.7	Faculty	11.52	893.5	77.6	302.0	26.2
OPS Regular Faculty	0.00	0.0	0.0	0.0	0.0	OPS Regular Faculty	0.00	0.0	0.0	0.0	0.0
OPS Faculty Adjuncts	0.43	184.7	426.1	62.7	144.6	OPS Faculty Adjuncts	0.00	0.0	0.0	0.0	0.0
Graduate Assistants	8.23	82.2	10.0	82.2	10.0	Graduate Assistants	7.25	81.0	11.2	81.0	11.2
A & P / USPS	0.00	0.0	0.0	0.0	0.0	A & P / USPS	0.00	0.0	0.0	0.0	0.0
Others	6.14	409.2	66.6	188.2	30.6	Others	4.13	589.0	142.6	260.0	63.0
	26.76	1,838.0	68.7	736.0	27.5		22.89	1,563.5	68.3	643.0	28.1
<u>Fall 2009</u>						<u>Spring 2010</u>					
Faculty	11.32	920.7	81.3	333.7	29.5	Faculty	11.07	876.2	79.2	317.2	28.7
OPS Regular Faculty	0.00	0.0	0.0	0.0	0.0	OPS Regular Faculty	0.00	0.0	0.0	0.0	0.0
OPS Faculty Adjuncts	0.70	290.4	413.9	98.4	140.2	OPS Faculty Adjuncts	1.16	363.9	314.9	123.9	107.2
Graduate Assistants	5.74	72.0	12.6	72.0	12.6	Graduate Assistants	4.24	130.0	30.7	129.6	30.6
A & P / USPS	0.00	0.0	0.0	0.0	0.0	A & P / USPS	0.00	0.0	0.0	0.0	0.0
Others	2.64	611.9	231.8	233.9	88.6	Others	3.46	561.3	162.4	236.3	68.4
	20.40	1,895.0	92.9	738.0	36.2		19.91	1,931.4	97.0	807.0	40.5

Electrical & Computer Engineering - Faculty Courses & Hours

Fall 2005- Spring 2006				Organized Classes (C,D,L)									
Faculty Member	Class	Pay	FTE	SCH		Total	Headcount		Total	Sections		Total	
				UGrad	Grad	SCH	UGrad	Grad	HC	UGrad	Grad	#Sec.	
ANDREI	9003	22	2.00	62.7	9.0	71.7	20.0	3.0	23.0	3.9	2.0	5.9	
BALDWIN	9002	22	0.13	85.7	18.0	103.7	53.1	5.0	58.1	5.9	1.0	6.9	
CHANG	9002	22	2.00	266.4	18.0	284.4	121.9	5.0	126.9	10.9	1.0	11.9	
FOO	9001	22	2.00	132.1	24.0	156.1	55.8	7.0	62.8	7.9	2.0	9.9	
FRANK	9003	22	2.00	144.0	3.0	147.0	44.4	1.0	45.4	6.6	1.0	7.6	
KWAN	9002	22	2.00	227.0	12.0	239.0	81.0	4.0	85.0	7.0	2.0	9.0	
LI	9003	22	2.00	242.4	21.0	263.4	113.1	7.0	120.1	9.4	2.0	11.4	
MCLAREN	9001	22	0.20	75.0	12.0	87.0	25.0	4.0	29.0	1.0	1.0	2.0	
MEYER-BAESE	9003	22	2.00	185.7	24.0	209.7	61.0	8.0	69.0	3.9	1.0	4.9	
MEYER-BAESE	9003	22	0.72	57.0	-	57.0	19.0	-	19.0	1.0	-	1.0	
ROBERTS	9001	22	2.00	211.5	15.0	226.5	67.8	95.0	162.8	4.8	3.0	7.8	
STEURER	9003	22	2.00	120.0	18.0	138.0	40.0	5.0	45.0	3.0	1.0	4.0	
THAGARD	9009	22	1.78	72.0	-	72.0	24.0	-	24.0	3.0	-	3.0	
TUNG	9002	22	2.00	79.8	42.0	121.8	25.7	13.0	38.7	1.9	1.0	2.9	
WEATHERSPOON	9003	22	2.00	174.0	6.0	180.0	58.0	2.0	60.0	3.0	1.0	4.0	
AZONGHA	9184	05	0.76	7.5	-	7.5	5.3	-	5.3	0.8	-	0.8	
EJAZ	9184	05	0.95	15.3	-	15.3	10.0	-	10.0	1.8	-	1.8	
SCHILLING	9001	06	0.50	22.0	-	22.0	22.0	-	22.0	3.0	-	3.0	
TUCKER	9004	06	0.41	636.0	-	636.0	278.0	-	278.0	12.0	-	12.0	
ARORA	9003	98	2.84	322.8	18.0	340.8	105.8	6.0	111.8	6.8	2.0	8.8	
ARORA	9001	98	0.81	33.0	33.0	66.0	11.0	11.0	22.0	2.0	2.0	4.0	
HARVEY	9002	98	2.12	322.6	63.0	385.6	121.9	20.0	141.9	12.5	3.0	15.5	
OGUNTI	9184	98	0.42	11.3	-	11.3	7.5	-	7.5	1.5	-	1.5	
PERRY	9001	98	2.13	325.0	-	325.0	217.0	-	217.0	11.0	-	11.0	
WILLIAMS	9184	98	0.21	3.8	-	3.8	2.3	-	2.3	0.8	-	0.8	
ZHENG	9002	98	1.25	86.7	6.0	92.7	28.0	2.0	30.0	2.9	1.0	3.9	
TOTALS				3,921.3	342.0	4,263.3	1,618.4	198.0	1,816.4	128.0	27.0	155.0	
AVERAGE PER FACULTY				150.8	20.1	164.0	62.2	11.6	69.9	4.9	1.6	6.0	

Electrical & Computer Engineering - Faculty Courses & Hours

Fall 2005- Spring 2006				Individualized (G,T,I,O,P,R,S,Z)								
Faculty Member	Class	Pay	FTE	SCH		Total	Headcount		Total	Sections		Total
				UGrad	Grad	SCH	UGrad	Grad	HC	UGrad	Grad	#Sec.
ANDREI	9003	22	2.00	-	-	-	-	-	-	-	-	-
BALDWIN	9002	22	0.13	-	38.0	38.0	-	9.0	9.0	-	6.0	6.0
CHANG	9002	22	2.00	-	9.0	9.0	-	3.0	3.0	-	3.0	3.0
FOO	9001	22	2.00	-	65.0	65.0	-	13.0	13.0	-	7.0	7.0
FRANK	9003	22	2.00	-	6.0	6.0	-	1.0	1.0	-	1.0	1.0
KWAN	9002	22	2.00	-	84.0	84.0	-	14.0	14.0	-	8.0	8.0
LI	9003	22	2.00	-	49.0	49.0	-	8.0	8.0	-	3.0	3.0
MCLAREN	9001	22	0.20	-	21.0	21.0	-	3.0	3.0	-	3.0	3.0
MEYER-BAESE	9003	22	2.00	-	-	-	-	-	-	-	-	-
MEYER-BAESE	9003	22	0.72	-	21.0	21.0	-	3.0	3.0	-	3.0	3.0
ROBERTS	9001	22	2.00	-	60.0	60.0	-	9.0	9.0	-	5.0	5.0
STEURER	9003	22	2.00	-	3.0	3.0	-	1.0	1.0	-	1.0	1.0
THAGARD	9009	22	1.78	-	-	-	-	-	-	-	-	-
TUNG	9002	22	2.00	-	-	-	-	-	-	-	-	-
WEATHERSPOON	9003	22	2.00	3.0	30.0	33.0	1.0	8.0	9.0	1.0	5.0	6.0
AZONGHA	9184	05	0.76	-	-	-	-	-	-	-	-	-
EJAZ	9184	05	0.95	-	-	-	-	-	-	-	-	-
SCHILLING	9001	06	0.50	-	-	-	-	-	-	-	-	-
TUCKER	9004	06	0.41	-	-	-	-	-	-	-	-	-
ARORA	9003	98	2.84	6.0	7.0	13.0	2.0	2.0	4.0	2.0	2.0	4.0
ARORA	9001	98	0.81	-	9.0	9.0	-	3.0	3.0	-	3.0	3.0
HARVEY	9002	98	2.12	-	18.0	18.0	-	2.0	2.0	-	2.0	2.0
OGUNTI	9184	98	0.42	-	-	-	-	-	-	-	-	-
PERRY	9001	98	2.13	-	3.0	3.0	-	1.0	1.0	-	1.0	1.0
WILLIAMS	9184	98	0.21	-	-	-	-	-	-	-	-	-
ZHENG	9002	98	1.25	-	53.0	53.0	-	7.0	7.0	-	3.0	3.0
TOTALS				9.0	476.0	485.0	3.0	87.0	90.0	3.0	56.0	59.0
AVERAGE PER FACULTY				4.5	29.8	30.3	1.5	5.4	5.6	1.5	3.5	3.7

Electrical & Computer Engineering - Faculty Courses & Hours

Fall 2005- Spring 2006				All Types								
Faculty Member	Class	Pay	FTE	SCH		TOTAL	Headcount		TOTAL	Sections		TOTAL
				UGrad	Grad	SCH	UGrad	Grad	HC	UGrad	Grad	#Sec.
ANDREI	9003	22	2.00	62.7	9.0	71.7	20.0	3.0	23.0	3.9	2.0	5.9
BALDWIN	9002	22	0.13	85.7	56.0	141.7	53.1	14.0	67.1	5.9	7.0	12.9
CHANG	9002	22	2.00	266.4	27.0	293.4	121.9	8.0	129.9	10.9	4.0	14.9
FOO	9001	22	2.00	132.1	89.0	221.1	55.8	20.0	75.8	7.9	9.0	16.9
FRANK	9003	22	2.00	144.0	9.0	153.0	44.4	2.0	46.4	6.6	2.0	8.6
KWAN	9002	22	2.00	227.0	96.0	323.0	81.0	18.0	99.0	7.0	10.0	17.0
LI	9003	22	2.00	242.4	70.0	312.4	113.1	15.0	128.1	9.4	5.0	14.4
MCLAREN	9001	22	0.20	75.0	33.0	108.0	25.0	7.0	32.0	1.0	4.0	5.0
MEYER-BAESE	9003	22	2.00	185.7	24.0	209.7	61.0	8.0	69.0	3.9	1.0	4.9
MEYER-BAESE	9003	22	0.72	57.0	21.0	78.0	19.0	3.0	22.0	1.0	3.0	4.0
ROBERTS	9001	22	2.00	211.5	75.0	286.5	67.8	104.0	171.8	4.8	8.0	12.8
STEURER	9003	22	2.00	120.0	21.0	141.0	40.0	6.0	46.0	3.0	2.0	5.0
THAGARD	9009	22	1.78	72.0	-	72.0	24.0	-	24.0	3.0	-	3.0
TUNG	9002	22	2.00	79.8	42.0	121.8	25.7	13.0	38.7	1.9	1.0	2.9
WEATHERSPOON	9003	22	2.00	177.0	36.0	213.0	59.0	10.0	69.0	4.0	6.0	10.0
AZONGHA	9184	05	0.76	7.5	-	7.5	5.3	-	5.3	0.8	-	0.8
EJAZ	9184	05	0.95	15.3	-	15.3	10.0	-	10.0	1.8	-	1.8
SCHILLING	9001	06	0.50	22.0	-	22.0	22.0	-	22.0	3.0	-	3.0
TUCKER	9004	06	0.41	636.0	-	636.0	278.0	-	278.0	12.0	-	12.0
ARORA	9003	98	2.84	328.8	25.0	353.8	107.8	8.0	115.8	8.8	4.0	12.8
ARORA	9001	98	0.81	33.0	42.0	75.0	11.0	14.0	25.0	2.0	5.0	7.0
HARVEY	9002	98	2.12	322.6	81.0	403.6	121.9	22.0	143.9	12.5	5.0	17.5
OGUNTI	9184	98	0.42	11.3	-	11.3	7.5	-	7.5	1.5	-	1.5
PERRY	9001	98	2.13	325.0	3.0	328.0	217.0	1.0	218.0	11.0	1.0	12.0
WILLIAMS	9184	98	0.21	3.8	-	3.8	2.3	-	2.3	0.8	-	0.8
ZHENG	9002	98	1.25	86.7	59.0	145.7	28.0	9.0	37.0	2.9	4.0	6.9
TOTALS				3,930.3	818.0	4,748.3	1,621.4	285.0	1,906.4	131.0	83.0	214.0
AVERAGE PER FACULTY				151.2	43.1	182.6	62.4	15.0	73.3	5.0	4.4	8.2

Electrical & Computer Engineering - Faculty Courses & Hours

Fall 2009 - Spring 2010				Organized Classes (C,D,L)								
Faculty Member	Class	Pay	FTE	SCH		Total	Headcount		Total	Sections		Total
				UGrad	Grad	SCH	UGrad	Grad	HC	UGrad	Grad	#Sec.
ANDREI	9003	22	1.99	176.1	15.0	191.1	62.1	5.0	67.1	2.4	1.0	3.4
DEBRUNNER V	9001	22	1.99	111.0	9.0	120.0	37.0	3.0	40.0	2.0	1.0	3.0
DEBRUNNER L	9002	22	1.99	120.0	18.0	138.0	40.0	6.0	46.0	3.0	2.0	5.0
EDRINGTON	9003	22	1.74	90.0	33.0	123.0	30.0	11.0	41.0	1.0	1.0	2.0
FOO	9001	22	1.99	99.2	39.0	138.2	36.2	13.0	49.2	4.2	2.0	6.2
KWAN	9002	22	1.99	39.7	45.0	84.7	13.7	111.0	124.7	2.1	4.0	6.1
LI	9002	22	1.99	60.5	135.0	195.5	20.5	45.0	65.5	3.1	3.0	6.1
MEYER-BASE	9002	22	1.99	69.0	30.0	99.0	23.0	10.0	33.0	2.0	2.0	4.0
ROBERTS	9001	22	1.99	24.0	87.0	111.0	8.0	29.0	37.0	1.0	2.0	3.0
TUNG	9002	22	1.99	120.0	63.0	183.0	40.0	21.0	61.0	2.0	2.0	4.0
ZHENG	9001	22	1.76	3.0	12.0	15.0	1.0	4.0	5.0	1.0	1.0	2.0
HENRY	9189	00	0.85	-	-	-	-	-	-	-	-	-
DENG	9184	05	0.42	21.1	-	21.1	21.0	-	21.0	1.8	-	1.8
GHUMAN	9184	05	0.83	56.7	-	56.7	56.7	-	56.7	5.4	-	5.4
GUO	9184	05	0.42	32.0	-	32.0	32.0	-	32.0	2.6	-	2.6
LANGONI	9184	05	0.42	16.7	-	16.7	16.7	-	16.7	1.9	-	1.9
LIU	9184	05	0.83	49.4	-	49.4	49.3	-	49.3	4.5	-	4.5
DANKU	9004	06	0.66	306.9	24.0	330.9	104.9	8.0	112.9	2.3	1.0	3.3
HOANG	9004	06	0.63	83.1	-	83.1	45.1	-	45.1	3.7	-	3.7
MEDDA	9004	06	0.50	266.4	-	266.4	90.4	-	90.4	2.3	-	2.3
ARORA	9001	98	1.00	96.0	24.0	120.0	32.0	8.0	40.0	3.0	2.0	5.0
HARVEY	9002	98	1.04	213.0	-	213.0	71.0	-	71.0	3.0	-	3.0
PERRY	9001	98	1.70	346.6	-	346.6	202.6	-	202.6	6.7	-	6.7
WEATHERSPOON	9003	98	1.09	216.0	60.0	276.0	72.0	20.0	92.0	2.0	2.0	4.0
YU	9001	98	0.75	81.0	30.0	111.0	27.0	10.0	37.0	2.0	2.0	4.0
TOTALS				2,697.4	624.0	3,321.4	1,132.0	304.0	1,436.0	65.0	28.0	93.0
AVERAGE PER FACULTY				112.4	41.6	138.4	47.2	20.3	59.8	2.7	1.9	3.9

Electrical & Computer Engineering - Faculty Courses & Hours

Fall 2009 - Spring 2010				Individualized (G,T,I,O,P,R,S,Z)								
Faculty Member	Class	Pay	FTE	SCH		Total	Headcount		Total	Sections		Total
				UGrad	Grad	SCH	UGrad	Grad	HC	UGrad	Grad	#Sec.
ANDREI	9003	22	1.99	3.0	14.0	17.0	1.0	3.0	4.0	1.0	3.0	4.0
DEBRUNNER V	9001	22	1.99	3.0	66.0	69.0	1.0	12.0	13.0	1.0	7.0	8.0
DEBRUNNER L	9002	22	1.99	-	41.0	41.0	-	6.0	6.0	-	5.0	5.0
EDRINGTON	9003	22	1.74	7.4	52.0	59.4	3.4	14.0	17.4	2.2	4.0	6.2
FOO	9001	22	1.99	9.0	60.0	69.0	3.0	9.0	12.0	3.0	6.0	9.0
KWAN	9002	22	1.99	-	23.0	23.0	-	4.0	4.0	-	3.0	3.0
LI	9002	22	1.99	-	69.0	69.0	-	16.0	16.0	-	7.0	7.0
MEYER-BASE	9002	22	1.99	-	-	-	-	-	-	-	-	-
ROBERTS	9001	22	1.99	-	36.0	36.0	-	4.0	4.0	-	2.0	2.0
TUNG	9002	22	1.99	-	-	-	-	-	-	-	-	-
ZHENG	9001	22	1.76	-	15.0	15.0	-	5.0	5.0	-	4.0	4.0
HENRY	9189	00	0.85	12.6	-	12.6	12.6	-	12.6	1.8	-	1.8
DENG	9184	05	0.42	-	-	-	-	-	-	-	-	-
GHUMAN	9184	05	0.83	-	-	-	-	-	-	-	-	-
GUO	9184	05	0.42	-	-	-	-	-	-	-	-	-
LANGONI	9184	05	0.42	-	-	-	-	-	-	-	-	-
LIU	9184	05	0.83	-	-	-	-	-	-	-	-	-
DANKU	9004	06	0.66	-	-	-	-	-	-	-	-	-
HOANG	9004	06	0.63	-	-	-	-	-	-	-	-	-
MEDDA	9004	06	0.50	-	-	-	-	-	-	-	-	-
ARORA	9001	98	1.00	-	-	-	-	-	-	-	-	-
HARVEY	9002	98	1.04	-	54.0	54.0	-	7.0	7.0	-	5.0	5.0
PERRY	9001	98	1.70	-	-	-	-	-	-	-	-	-
WEATHERSPOON	9003	98	1.09	-	28.0	28.0	-	4.0	4.0	-	4.0	4.0
YU	9001	98	0.75	3.0	9.0	12.0	1.0	3.0	4.0	1.0	3.0	4.0
TOTALS				38.0	467.0	505.0	22.0	87.0	109.0	10.0	53.0	63.0
AVERAGE PER FACULTY				6.3	38.9	38.8	3.7	7.3	8.4	1.7	4.4	4.8

Electrical & Computer Engineering - Faculty Courses & Hours

Fall 2009 - Spring 2010				All Types									
Faculty Member	Class	Pay	FTE	SCH		TOTAL	Headcount		TOTAL	Sections		TOTAL	
				UGrad	Grad	SCH	UGrad	Grad	HC	UGrad	Grad	#Sec.	
ANDREI	9003	22	1.99	179.1	29.0	208.1	63.1	8.0	71.1	3.4	4.0	7.4	
DEBRUNNER V	9001	22	1.99	114.0	75.0	189.0	38.0	15.0	53.0	3.0	8.0	11.0	
DEBRUNNER L	9002	22	1.99	120.0	59.0	179.0	40.0	12.0	52.0	3.0	7.0	10.0	
EDRINGTON	9003	22	1.74	97.4	85.0	182.4	33.4	25.0	58.4	3.2	5.0	8.2	
FOO	9001	22	1.99	108.2	99.0	207.2	39.2	22.0	61.2	7.2	8.0	15.2	
KWAN	9002	22	1.99	39.7	68.0	107.7	13.7	115.0	128.7	2.1	7.0	9.1	
LI	9002	22	1.99	60.5	204.0	264.5	20.5	61.0	81.5	3.1	10.0	13.1	
MEYER-BASE	9002	22	1.99	69.0	30.0	99.0	23.0	10.0	33.0	2.0	2.0	4.0	
ROBERTS	9001	22	1.99	24.0	123.0	147.0	8.0	33.0	41.0	1.0	4.0	5.0	
TUNG	9002	22	1.99	120.0	63.0	183.0	40.0	21.0	61.0	2.0	2.0	4.0	
ZHENG	9001	22	1.76	3.0	27.0	30.0	1.0	9.0	10.0	1.0	5.0	6.0	
HENRY	9189	00	0.85	12.6	-	12.6	12.6	-	12.6	1.8	-	1.8	
DENG	9184	05	0.42	21.1	-	21.1	21.0	-	21.0	1.8	-	1.8	
GHUMAN	9184	05	0.83	56.7	-	56.7	56.7	-	56.7	5.4	-	5.4	
GUO	9184	05	0.42	32.0	-	32.0	32.0	-	32.0	2.6	-	2.6	
LANGONI	9184	05	0.42	16.7	-	16.7	16.7	-	16.7	1.9	-	1.9	
LIU	9184	05	0.83	49.4	-	49.4	49.3	-	49.3	4.5	-	4.5	
DANKU	9004	06	0.66	306.9	24.0	330.9	104.9	8.0	112.9	2.3	1.0	3.3	
HOANG	9004	06	0.63	83.1	-	83.1	45.1	-	45.1	3.7	-	3.7	
MEDDA	9004	06	0.50	266.4	-	266.4	90.4	-	90.4	2.3	-	2.3	
ARORA	9001	98	1.00	96.0	24.0	120.0	32.0	8.0	40.0	3.0	2.0	5.0	
HARVEY	9002	98	1.04	213.0	54.0	267.0	71.0	7.0	78.0	3.0	5.0	8.0	
PERRY	9001	98	1.70	346.6	-	346.6	202.6	-	202.6	6.7	-	6.7	
WEATHERSPOON	9003	98	1.09	216.0	88.0	304.0	72.0	24.0	96.0	2.0	6.0	8.0	
YU	9001	98	0.75	84.0	39.0	123.0	28.0	13.0	41.0	3.0	5.0	8.0	
TOTALS				2,735.4	1,091.0	3,826.4	1,154.0	391.0	1,545.0	75.0	81.0	156.0	
AVERAGE PER FACULTY				109.4	68.2	153.1	46.2	24.4	61.8	3.0	5.1	6.2	

**Operating Budget E&G Position FTE and Rate Totals
By Pay Plan, Month Type, Filled/Vacant, and Rank**

College of Engineering

Electrical & Computer Engineer

		2006-07	2007-08	2008-09	2009-10	2010-11
Total All Pay Plans	FTE	7.91	13.27	7.92	6.92	6.00
	Person Years	5.91	6.47	5.92	5.17	4.48
	Current Rate	\$715,699	\$776,025	\$685,535	\$635,009	\$515,442
Filled 9- & 12-Month Faculty	FTE	6.91	6.92	6.92	4.92	4.00
	Person Years	5.16	5.17	5.17	3.68	2.99
	Current Rate	\$645,699	\$580,825	\$593,506	\$466,011	\$346,444
Vacant & Reserve Faculty	FTE	1.00	1.00	1.00	2.00	2.00
	Person Years	0.75	0.75	0.75	1.49	1.49
	Current Rate	\$70,000	\$128,516	\$92,029	\$168,998	\$168,998
Summer Faculty	FTE		5.35			
	Person Years		0.55			
	Current Rate		\$66,684			

Source: Office of Institutional Research

E & G Expenditures by Budget Category, By Major Object code, Departments within School

College of Engineering

Electrical & Computer Engineer

Category Code	Object Code	2005-06	2006-07	2007-08	2008-09	2009-10
SALARY	FACULTY	\$1,298,562	\$665,663	\$600,306	\$414,675	\$421,066
	USPS	\$31,480				
	FRINGE BENEFITS	\$323,423	\$151,573	\$143,417	\$101,351	\$102,876
	OTHER SALARY	\$500				
SALARY		\$1,653,965	\$817,236	\$743,723	\$516,026	\$523,942
EXPENSE	CONSULTING & OTHER			\$820		\$295
	EDUCATIONAL SUPPLIES			\$487		
	EQUIPMENT & BOOKS			\$3,695	\$2,041	\$306
	EXPENSE OTHER			\$9		
	MAINT & HEATING SUPPLIES			\$313	\$162	\$79
	OFFICE SUPPLIES			\$81		\$358
	OTHER CURRENT CHARGES			\$2,600		
	OTHER MATERIALS & SUPPLIES	\$85		\$1,228	\$846	\$983
	PRINTING					\$9,544
	RENTAL OF EQUIPMENT				\$420	
	REPAIRS & MAINTENANCE		\$72	\$18		\$6,083
	TELEPHONE				\$44	
	TRAVEL			\$12,810	\$2,705	\$5,466
	POSTAGE				\$333	\$6
FREIGHT					\$8	
EXPENSE		\$85	\$72	\$22,061	\$6,551	\$23,128
OPS	FRINGE BENEFITS	\$1,565				
	FACULTY ADJUNCTS	\$20,455			\$15,709	
	GRAD ASST	\$155,741				
	OPS OTHER	\$21,156				\$290
	STUDENT ASST	\$10,335				
	OPS FRINGE BENEFITS					\$4
OPS		\$209,252			\$15,709	\$294
OCO	DATA PROCESSING EQUIPMENT			\$4,153		
	EDUCATIONAL EQUIPMENT			\$593		
OCO				\$4,746		
	Department Total:	\$1,863,302	\$817,308	\$770,530	\$538,286	\$547,364

Program : Electrical & Computer Engineering

Number of students who entered the program between 1999 and 2009					Record the number who within the various time spans listed below completed degree within given number of years after enrolling								
	Number of entering doctoral students	Number of students who left the program without a master's or doctoral degree	Number of students who left the program after receiving a master's degree or specialist	Number of students admitted to doctoral candidacy	3 years or less	4 years	5 years	6 years	7 years	8 years	9 years	10 years or more	Number still enrolled after 10 years
1999-2000	4	2		2		1	1						
2000-2001	2			2				1	1				
2001-2002	2		1	0									
2002-2003	10	2		9	1	1		3			1		
2003-2004	12	2	1	9		4	3		1	1			
2004-2005	5	2	1	4			1	1					
2005-2006	11	1		10		4		4					
2006-2007	8	1	1	5	2	1	2						
2007-2008	7		1	7	1								
2008-2009	4	2		1									
2009-2010	8			3									

**Quality Enhancement Review
Unit Accomplishment Summary
Teaching and Research Overview
2009-2010**

**Name of Program:
Electrical and Computer Engineering**

Faculty member	Instructional assignment (%)	Number of organized courses taught (C,D,L)	Number of individualized courses (G,T,I,O,P,R,S,Z)	Instructional contact hours	Number of directed individual studies (DIS)	Number of PhD students supervised	Research assignment (%)	NRC-countable publications and/or creative products	ALL SOURCES			
									Number of proposals submitted	Number of proposals funded	Total grant funds awarded	Number of honors and awards
ANDREI		3.4	4.0	10.8								
DEBRUNNER V		3.0	8.0	17.0								
DEBRUNNER L		5.0	5.0	14.0								
EDRINGTON		2.0	6.2	19.2								
FOO		6.2	9.0	22.5								
KWAN		6.1	3.0	15.3								
LI		6.1	7.0	23.3								
MEYER-BAESE		4.0	0.0	9.0								
ROBERTS		3.0	2.0	13.0								
TUNG		4.0	0.0	12.0								
ZHENG		2.0	4.0	6.5								
HENRY		0.0	1.8	6.3								
DENG		1.8	0.0	5.9								
GHUMAN		5.4	0.0	17.8								
GUO		2.6	0.0	8.6								
KANGONI		1.9	0.0	6.3								
LIU		4.5	0.0	14.9								
DANKU		3.3	0.0	10.0								
HOANG		3.7	0.0	11.9								
MEDDA		2.3	0.0	7.0								
ARORA		5.0	0.0	12.0								
HARVEY		3.0	5.0	12.5								
PERRY		6.7	0.0	16.4								
WEATHERSPOON		4.0	4.0	13.0								
YU		4.0	4.0	9.0								
SUM		93.0	63.0	314.2								
MEAN		3.7	2.5	12.6								
MEDIAN		3.7	1.8	12.0								

**Quality Enhancement Review
Unit Accomplishment Summary
Instructional Activities
2009-2010**

Name of Program: Electrical and Computer Engineering

Faculty member	Instructional assignment (%)	Number of organized courses taught (C,D,L)	Total enrollment	Number of individualized courses (G,T,I,O,P,R,S,Z)	Total enrollment	Total instructional contact hours	Total student credit hours	Number of honors courses	Number of thesis/dissertation student committees
ANDREI		3.4	67.1	4.0	4	10.8	208.1		
DEBRUNNER V		3.0	40.0	8.0	13	17.0	189.0		
DEBRUNNER L		5.0	46.0	5.0	6	14.0	179.0		
EDRINGTON		2.0	41.0	6.2	17.4	19.2	182.4		
FOO		6.2	49.2	9.0	12	22.5	207.2		
KWAN		6.1	124.7	3.0	4	15.3	107.7		
LI		6.1	65.5	7.0	16	23.3	264.5		
MEYER-BAESE		4.0	33.0	0.0	0	9.0	99.0		
ROBERTS		3.0	37.0	2.0	4	13.0	147.0		
TUNG		4.0	61.0	0.0	0	12.0	183.0		
ZHENG		2.0	5.0	4.0	5	6.5	30.0		
HENRY		0.0	0.0	1.8	12.6	6.3	12.6		
DENG		1.8	21.0	0.0	0	5.9	21.1		
GHUMAN		5.4	56.7	0.0	0	17.8	56.7		
GUO		2.6	32.0	0.0	0	8.6	32.0		
KANGONI		1.9	16.7	0.0	0	6.3	16.7		
LIU		4.5	49.3	0.0	0	14.9	49.4		
DANKU		3.3	112.9	0.0	0	10.0	330.9		
HOANG		3.7	45.1	0.0	0	11.9	83.1		
MEDDA		2.3	90.4	0.0	0	7.0	266.4		
ARORA		5.0	40.0	0.0	0	12.0	120.0		
HARVEY		3.0	71.0	5.0	7	12.5	267.0		
PERRY		6.7	202.6	0.0	0	16.4	346.6		
WEATHERSPOON		4.0	92.0	4.0	4	13.0	304.0		
YU		4.0	37.0	4.0	4	9.0	123.0		
SUM		93.0	1,436	63.0	109	314.2	3,826.4		
MEAN		4	57	3	4	13	153.1		
MEDIAN		3.7	46	1.8	4	12.0	147.0		