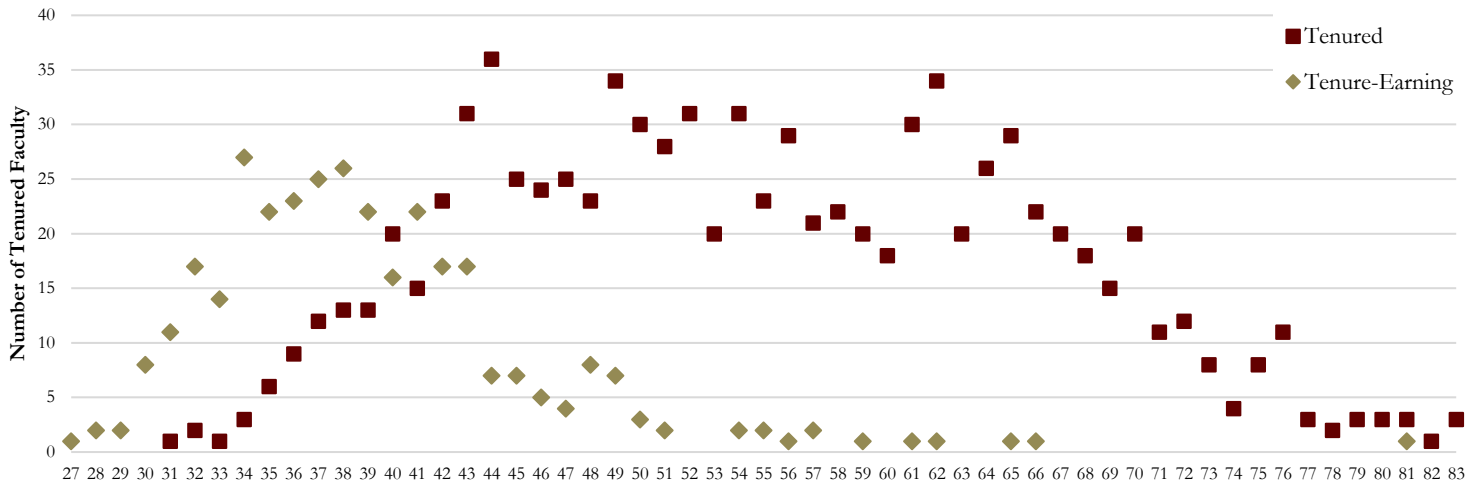


Tenured Faculty by Age, 2020-21



Tenured Faculty	25-30	31-35	36-40	41-45	46-50	51-55	56-60	61-65	66-70	71-75	76+	Total
Arts and Sciences	0	4	22	52	54	55	44	61	29	16	16	353
Business	0	1	5	8	9	9	6	7	9	3	0	57
Communication & Information	0	1	3	4	7	7	3	6	4	2	0	37
Criminology & Criminal Justice	0	3	0	2	4	1	0	0	0	0	2	12
Education	0	0	5	16	7	8	4	5	6	1	0	52
Engineering	0	1	3	4	9	8	7	7	3	1	0	43
Entrepreneurship	0	1	0	0	0	0	1	1	1	0	0	4
Fine Arts	0	0	4	9	7	6	9	11	7	7	1	61
Hospitality	0	0	1	0	1	0	2	1	1	0	0	6
Human Sciences	0	0	2	0	4	3	4	0	3	1	1	18
Law	0	0	4	5	2	2	4	1	3	2	0	23
Medicine	0	0	2	2	4	9	7	9	4	3	0	40
Motion Picture Arts	0	0	0	0	0	1	2	0	0	0	0	3
Music	0	0	0	6	7	9	12	9	11	1	4	59
Nursing	0	0	1	2	1	1	0	2	2	1	0	10
Social Sciences & Public Policy	0	2	13	14	13	11	1	9	6	3	3	75
Social Work	0	0	0	5	2	0	1	2	3	1	0	14
Other Departments and Offices*	<u>0</u>	<u>0</u>	<u>2</u>	<u>1</u>	<u>5</u>	<u>3</u>	<u>3</u>	<u>8</u>	<u>3</u>	<u>1</u>	<u>2</u>	<u>28</u>
Total	0	13	67	130	136	133	110	139	95	43	29	895
Tenure Earning Faculty	25-30	31-35	36-40	41-45	46-50	51-55	56-60	61-65	66-70	71-75	76+	Total
Arts and Sciences	6	30	35	29	3	1	0	0	0	0	0	104
Business	0	7	10	4	1	0	0	0	0	0	0	22
Communication & Information	1	3	9	3	1	1	1	0	0	0	0	19
Criminology & Criminal Justice	1	6	2	0	0	0	0	0	0	0	0	9
Education	1	3	10	4	1	0	0	0	0	0	0	19
Engineering	1	10	8	2	0	0	1	0	0	0	0	22
Entrepreneurship	1	0	1	0	0	0	0	0	0	0	0	2
Fine Arts	0	3	6	6	8	2	0	1	1	0	0	27
Hospitality	0	1	1	0	0	0	0	0	0	0	0	2
Human Sciences	0	7	6	0	3	0	0	0	0	0	0	16
Law	0	2	0	2	0	0	0	0	0	0	0	4
Medicine	0	1	3	4	3	2	0	0	0	0	0	13
Motion Picture Arts	0	0	0	0	0	0	0	0	0	0	0	0
Music	1	2	9	6	5	0	1	1	0	0	1	26
Nursing	0	0	0	3	2	0	1	0	0	0	0	6
Social Sciences & Public Policy	1	15	10	4	0	0	0	0	0	0	0	30
Social Work	0	1	1	2	0	0	0	0	0	0	0	4
Other Departments and Offices*	<u>0</u>	<u>0</u>	<u>1</u>	<u>1</u>	<u>0</u>	<u>0</u>	<u>0</u>	<u>1</u>	<u>0</u>	<u>0</u>	<u>0</u>	<u>3</u>
Total	13	91	112	70	27	6	4	3	1	0	1	328

* Other departments and offices include: Office of Distance Learning, The Graduate School, ISPA, LSI, National High Magnetic Field Lab., Office of the President, Office of the Provost, Office of Research, PC Campus, Center for Civic Education & Service, and Undergraduate Studies.

Source: Office of Institutional Research (Employee File)