

**FLORIDA STATE UNIVERSITY**  
University Organizational Chart  
Overview

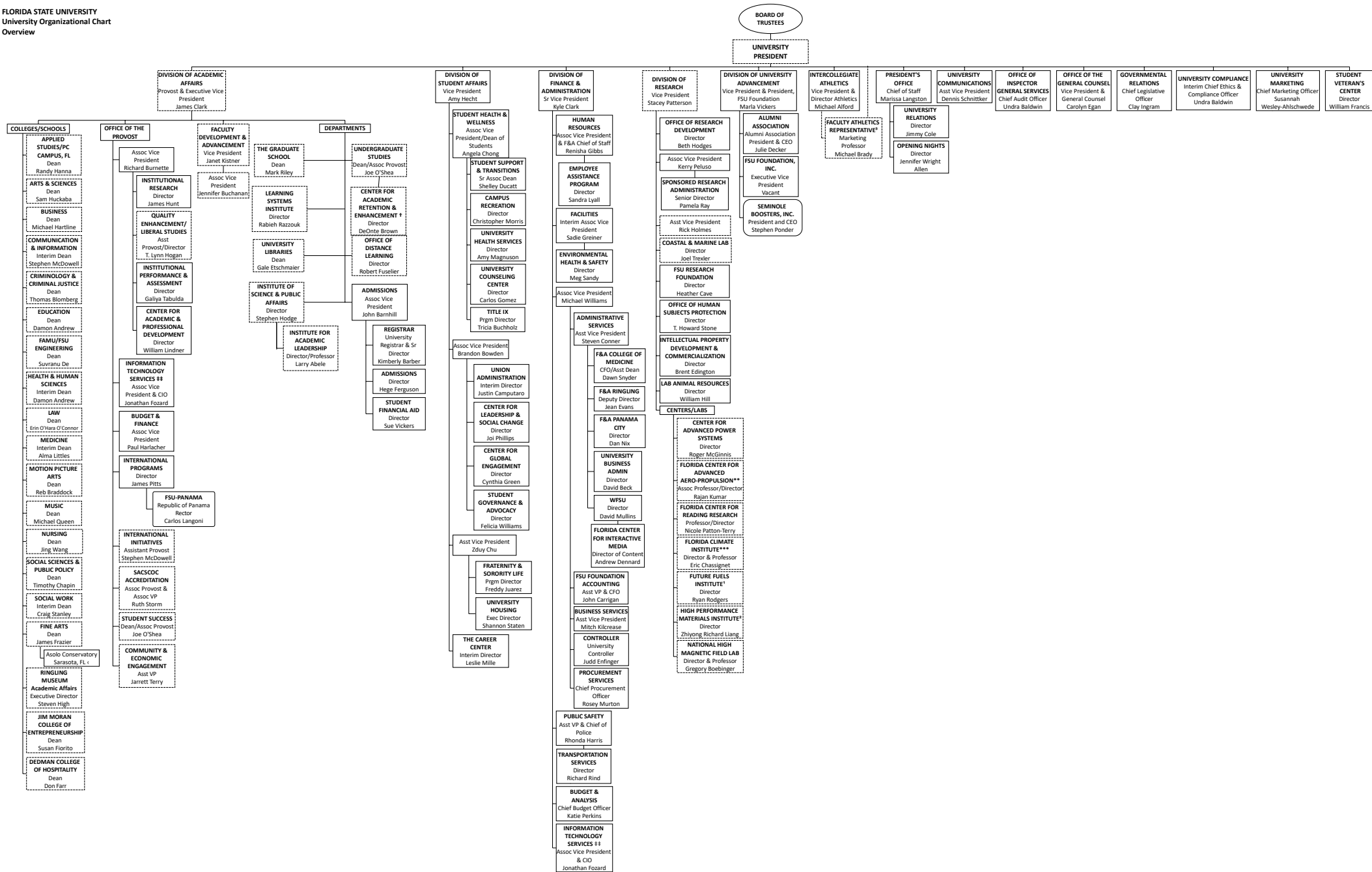


Chart last updated 6/1/2023  
 # Directly reports to Provost & Executive Vice President Academic Affairs; indirectly reports to Senior Vice President of Finance & Administration  
 † Directly reports to Dean of Undergraduate Studies; indirectly reports to Associate Vice President Student Affairs  
 ‡ Directly reports to ICF Facility Director; indirectly reports to Vice President of Research  
 § Directly reports to Chair of IME; indirectly reports to the Dean of Engineering  
 ¶ Directly reports to Dean of Business; indirectly reports to University President and Vice President Athletics  
 \*\* Directly reports to Dean of the College of Arts and Sciences  
 \*\*\* Directly reports to Dean of the College of Arts and Sciences  
 \* Directly reports to Dean of Panama City Campus  
 † Off Campus Sites